

*The National Conference  
on Keyboard Pedagogy  
2005*

Extraordinary Results  
with Every Student!

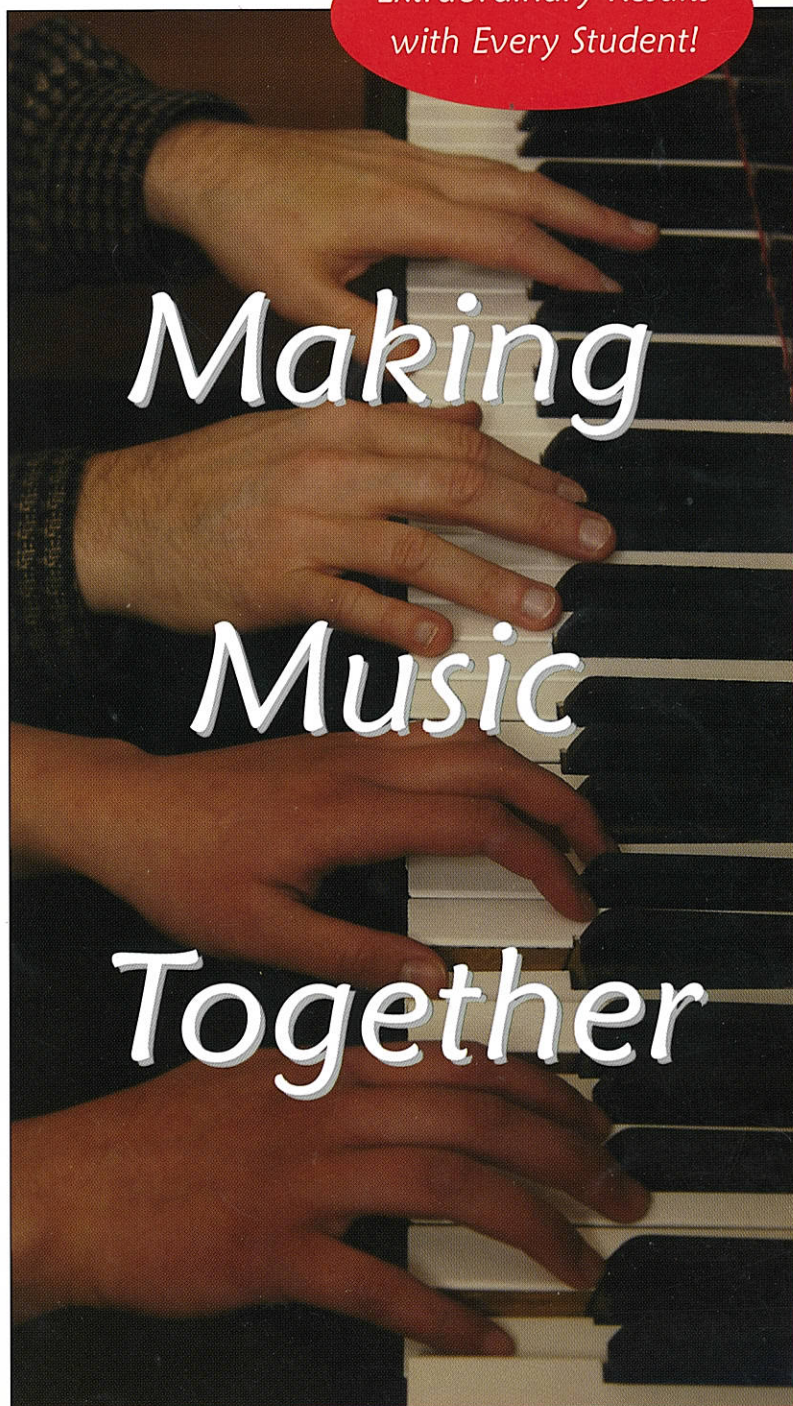
## Conference Program

*Lessons that inspire. Lessons that last.  
Every student can make music  
with confidence, artistry, and joy.  
Through exceptional teaching,  
no matter what the student's age  
or aptitude, ordinary performance  
can become extraordinary experience.*

**Thursday-Saturday  
August 4-6, 2005**

**Pre-Conference Seminars:  
August 3, 2005**

**Doubletree Chicago Oak Brook  
Oak Brook, Illinois**



[www.FrancesClarkCenter.org](http://www.FrancesClarkCenter.org)

# Keep your piano on pitch and double its life.

Today, more than 460,000 pianos worldwide are protected from humidity fluctuations by the PIANO LIFE SAVER SYSTEM. Working silently inside the piano, the System combats both dry conditions and highly-humid conditions, keeping the humidity level in the piano consistent continuously.

## The PIANO LIFE SAVER SYSTEM . . .

- Stabilizes pitch and permits tunings to hold better and longer (the tuning will not go sharp or flat due to weather or room humidity changes);
- Stabilizes the action, providing more predictable keyboard control;
- Prevents rust on strings and metal parts;
- Minimizes felt deterioration throughout the piano;
- Minimizes glue failure throughout the piano;
- Protects your piano's investment value year after year.

The following letter excerpt is from  
**STEINWAY & SONS:**

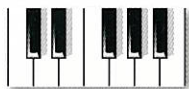
"To achieve optimum levels of humidity and temperature, the most desirable method is to control the room environment in which the piano is located. Sometimes such controls are not always practical or possible given the location of some pianos.

"In these less than desirable instances the installation of a Damp-Chaser Humidity Control System may be beneficial in providing a degree of climate control for the piano given that the installation is performed by a qualified installer and according to the manufacturer's recommendations."

*Piano*

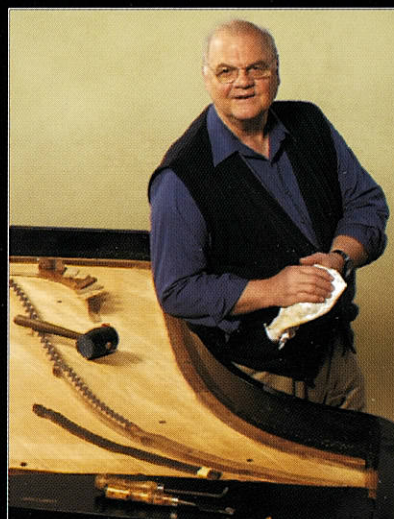
**LIFE SAVER SYSTEM™**

from  
**DAMPP-CHASER**



The System may be purchased  
from piano technicians and piano dealers.  
Please visit our website: [www.PianoLifeSaver.com](http://www.PianoLifeSaver.com)  
Tel: (800) 438-1524; email: [piano@dampp-chaser.com](mailto:piano@dampp-chaser.com)

Made in USA since 1947



"As a piano restorer, I have seen the damaging effects of humidity extremes on hundreds of pianos in the past 48 years. The System not only protects against costly repairs to most wooden parts, metal parts, felt and glue joints, it also stabilizes the pitch and improves the touch and tone noticeably."

LARRY CRABB, RPT  
REGISTERED PIANO TECHNICIAN  
ATLANTA, GEORGIA  
INSTALLED OVER 1400  
PIANO LIFE SAVER SYSTEMS  
SINCE 1973

PIANOS REQUIRE HUMIDITY CONTROL

Frederick Harris Music presents



# Exploring Celebrate Piano!

**Presenters:** J. Mitzi Kolar, Cathy Albergo, and Mark Mrozinski

**Date:** Saturday, August 6 from 1:00 p.m. to 1:45 p.m.

**Location:** Regency Ballroom



FREDERICK  
HARRIS  
MUSIC



—celebrating—  
**100 YEARS**  
1904-2004  
Publications of Quality and Distinction

*"Celebrate Piano!® is built around a body of exceptional educational repertoire and offers a plethora of activities that develop skills for comprehensive musicianship."*

Dr. Reid Alexander, Professor of Music  
University of Illinois School of Music

[www.frederickharrismusic.com](http://www.frederickharrismusic.com)



# Keys to Perfection

## The Right Features, The Right Keyboards, The Right Price

The P-60 is the perfect digital piano for those learning to play piano or for the accomplished player who wants a very light weight, portable instrument. Moving up, the P-120 adds Dynamic Stereo Sampling with an amazing 3 separate layers of stereo samples for stunning realism. If gigging is your thing, take a look at the P-90. The P-90 delivers truly professional digital piano performance in a sleek portable package. Or step up to the legendary P-250 with 128-note polyphony, sympathetic resonance, 16-track sequencer, and a full complement of Yamaha XG voices; it's the professional's choice for home, stage, or studio.

## Yamaha Graded Hammer Action

All P-Series Digital Pianos feature Yamaha's Graded Hammer Effect keyboard. This keyboard action flawlessly reproduces the action and touch sensitivity of our acoustic grand pianos. Even the most discriminating pianist will appreciate it.

## Lightweight

Portability isn't usually a feature that you associate with an 88-key instrument. Our P-Series instruments are built to travel. Starting at 37 lbs., the P-Series are easy to take anywhere. We even make custom bags and cases for them.

## Built by Yamaha

Yamaha has been designing and manufacturing world-class acoustic keyboards for well over a century and digital instruments for three decades. No one is more advanced at the art and science of making beautiful music.

Whether you are playing music at home, church, or school, performing live or in the studio, there is a Yamaha Digital Piano that is perfect for you.



 **YAMAHA**  
www.yamaha.com

©2005 Yamaha Corporation of America

# Welcome to the Conference

## Greetings



Louise Goss  
Chair, The Board of Trustees

Once again it is our pleasure and privilege to welcome you to the 2005 National Conference on Keyboard Pedagogy. The Conference Planning Committee has worked with diligence and imagination to prepare for these days together, and we are delighted you are here.

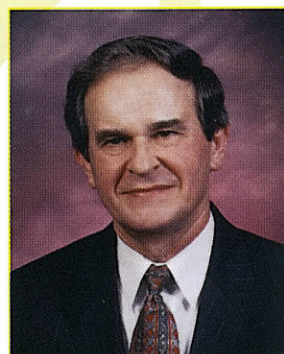
We feel quite sure that in the history of keyboard pedagogy there has never before been such an illustrious gathering of musical and pedagogical greats – superb artists, teachers, pedagogues, and music educators – a veritable “Who’s Who” of leaders in our field.

We believe we have been successful in keeping the Conference focused on its original goal: a meeting of keyboard educators centered on the teaching/learning process as it applies to music education at the keyboard.

We hope you will find here a satisfying blend of great artistry with practical and inspiring pedagogy. In addition there is a wide variety of topics relevant to the interests of both new and experienced teachers, both those who teach independently and those who work within college and university programs.

This year we are pleased to add two new features to the conference program: a special pre-conference seminar for college piano students and young professionals, and exhibits and showcases by members of the music industry. We welcome the students, for they represent the future of our profession. The ready support of the industry adds luster and variety to our conference, and we are indebted to them for their fine cooperation.

Thank you for joining us. We look forward to sharing with you the stimulation, enrichment, and joy of all that will follow in the days to come.



Marvin Blickenstaff  
President, The Board of Trustees

Louise Goss, Marvin Blickenstaff, and Sam Holland  
for The Board of Trustees  
The Frances Clark Center for Keyboard Pedagogy



Sam Holland  
Executive Director

Map of the hotel .....	5	Saturday: Conference Day Three ...	46
Pre-Conference Seminars .....	8	Frances Clark Center for Keyboard Pedagogy .....	51
Thursday: Conference Day One ...	18	Acknowledgments .....	52
Technology Hubs .....	26	Advertiser Index .....	53
Research Poster Presentations ...	27	National Conference on Keyboard Pedagogy Committees .....	54
Exhibitors .....	30		
Friday: Conference Day Two .....	36		

*The Frances Clark Center  
Is Proud to Present*

# A PIANO TEACHER'S LEGACY

*Selected Writings  
by  
Richard Chronister*

EDITED BY EDWARD DARLING

One of the great pedagogical thinkers of the 20th century, Richard Chronister spent his professional life asking questions, such as:

- How can I build on children's innate love of music?
- How can I teach so that my students keep learning, practicing and making music?
- How can I teach my students to become independent learners?

This collection contains his best answers to these questions and many more. They come from his articles, addresses and lectures. Whether speaking or writing, Chronister's style is always lucid, informal and engaging. He never pretends to have the final answer, and invites his audience to consider his advice and reach their own conclusions.

This book deserves a place in the library of every serious piano teacher!

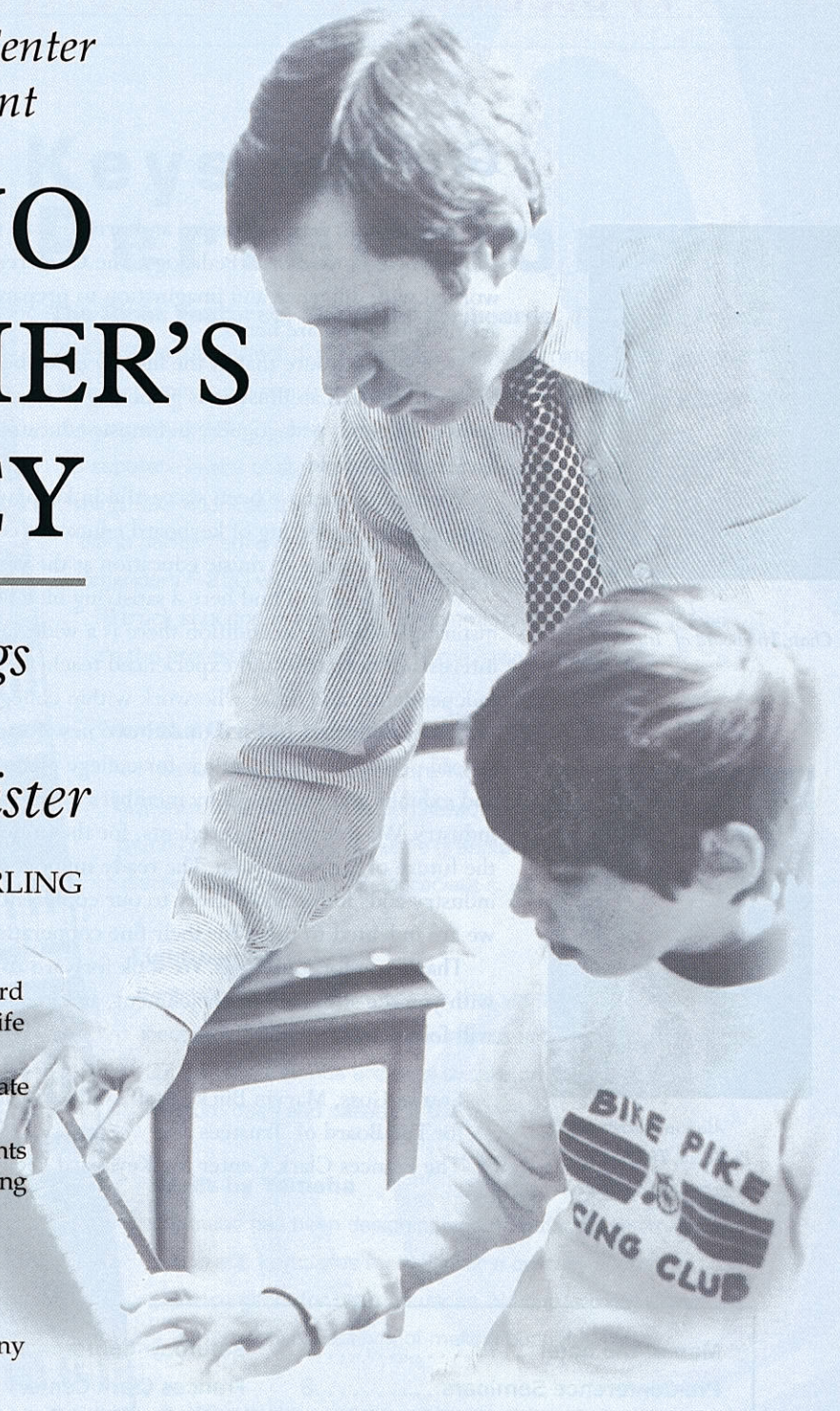
**Available at the NCKP Shop in the Regency Foyer**

Or contact:

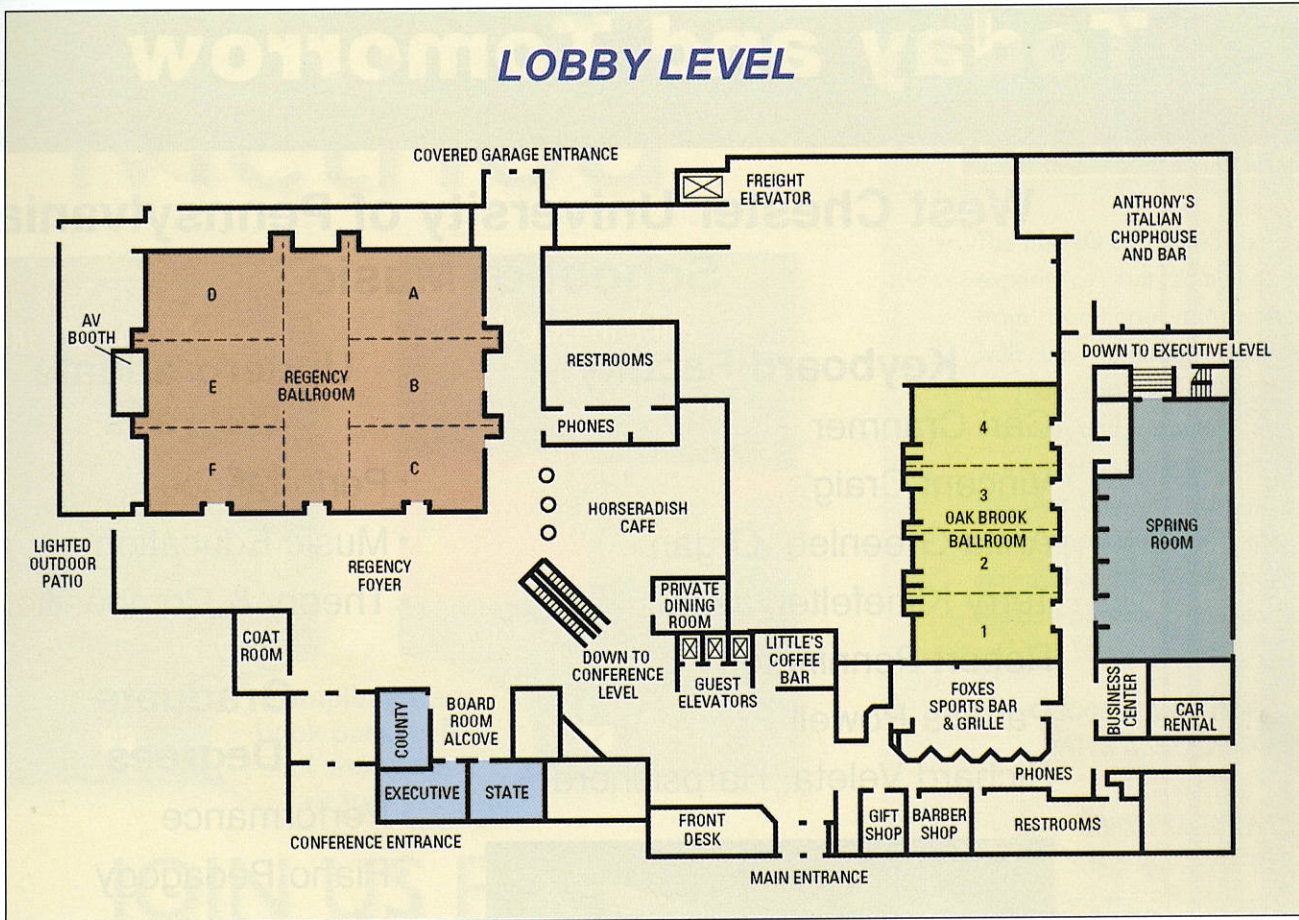
**The Frances Clark Center**

Box 651, Kingston, NJ 08528

chair@francesclarkcenter.org 609-921-0371



# Meeting rooms at the Doubletree Hotel



## Regency Ballroom:

All Plenary Sessions, including the Keynote Address, Recitals, Teaching Demonstrations, Technology on Center Stage, Pedagogical Legacies, and the Lifetime Achievement Award

## Regency Foyer:

Registration, Research Poster Presentations, Receptions

## Workshops:

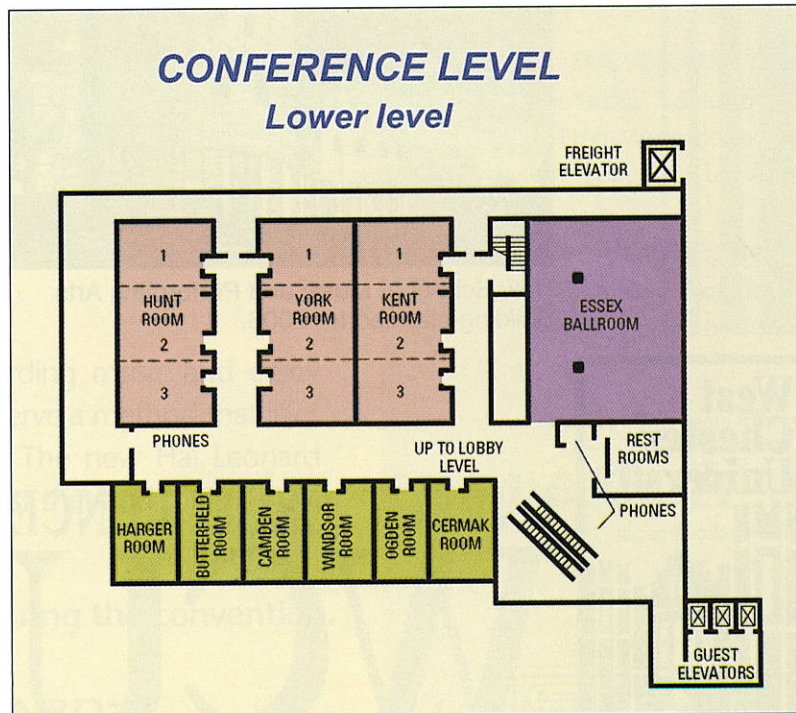
See pages 18 and 36 for locations

## Technology Hubs:

See page 26 for locations

## Exhibits:

Essex Ballroom, Kent Room, and Regency Foyer (see pages 30-31)



# Educating Pianists for Today and Tomorrow

## West Chester University of Pennsylvania School of Music

### Keyboard Faculty:

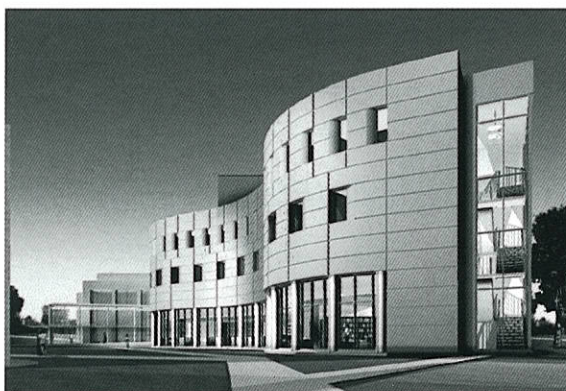
Carl Cranmer  
Vincent Craig  
Anita Greenlee, Organ  
Terry Klinefelter, Jazz  
Robert Pennington  
Patricia Powell  
Richard Veleta, Harpsichord

### Undergraduate Degrees

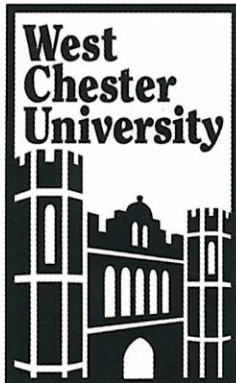
- Performance
- Music Education
- Theory & Composition

### Graduate Degrees

- Performance
- Piano Pedagogy
- History & Literature
- Theory & Composition
- Music Education



New School of Music and Performing Arts  
Building planned for 2006.



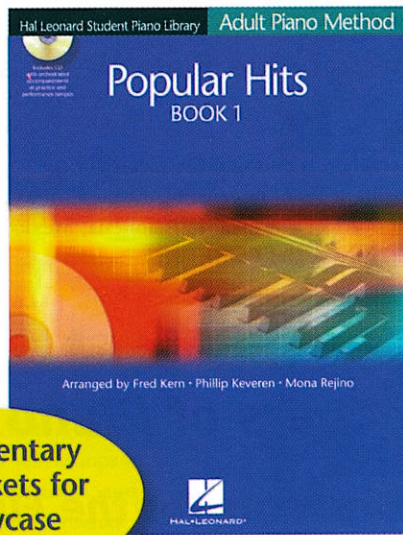
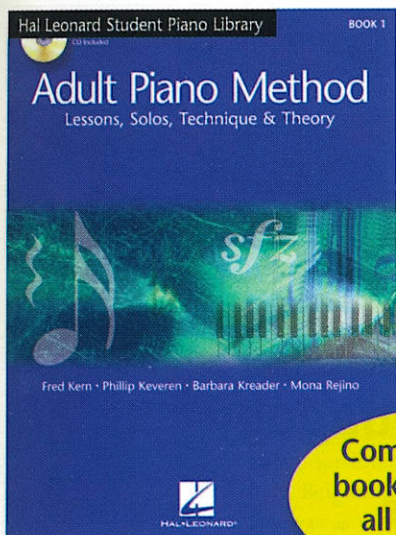
EXPECT EXCELLENCE  
**WCU**

### *Scholarships Available*

Dr. Timothy Blair, Dean  
School of Music – Swope Hall  
West Chester, PA 19383  
Phone: 610-436-2739  
E-mail: [tblair@wcupa.edu](mailto:tblair@wcupa.edu)  
Website: [www.wcupa.edu/cvpa](http://www.wcupa.edu/cvpa)



# Adult Piano Method



Complimentary book packets for all showcase attendees!

## JOIN US FOR OUR SHOWCASE!

Saturday, August 6, 2005  
1:00 PM in the Oak Brook Ballroom

Double Tree Hotel  
Oakbrook, IL



BARBARA KREADER  
Clinician

Adults want to play rewarding music and enjoy their piano study. They deserve a method that lives up to those expectations. The new Hal Leonard *Adult Piano Method* does just that and more.

Visit us at our exhibit booth (#15) during the convention.



7777 W. BLUEMOUND RD. P.O. BOX 13819 MILWAUKEE, WI 53213

www.halleonard.com

HAL LEONARD  
PRESENTS



The **PIANO DAY SPA**® is a unique experience that combines elements from traditional piano workshops with the nurturing environment of a real spa. Designed to restore balance and recapture the creative spirit in your daily teaching schedule, the Day Spa will help you discover new opportunities, explore your potential and follow the path to being the best possible piano teacher.

### 2005 PIANO DAY SPA DATES AND LOCATIONS

#### MILWAUKEE, WI

Saturday, August 20  
Print Music Hosted by  
White House of Music

#### LOS ANGELES, CA

Saturday, September 17  
Print Music Hosted by  
J.W. Pepper® - Los Angeles

#### MEMPHIS, TN

Saturday, October 1  
Print Music Hosted by Amro Music

Call or e-mail for more information  
on the **PIANO DAY SPA!**

**1-800-322-1127**

E-mail: piano@halleonard.com

Co-sponsored by



Presented by



# Wednesday: Pre-Conference Seminars

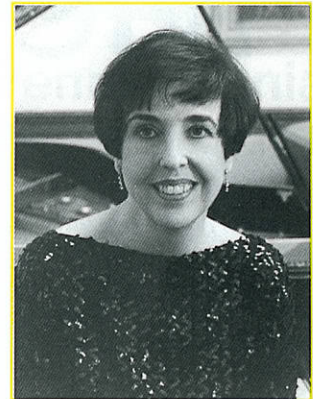
Wednesday, August 3

## Keynote Address

**Nelita True**

**"So What Do I Do Next?" A View of the Piano Major's Future in Music**

Nelita True, internationally known artist and teacher, is on the piano faculty of the Eastman School of Music. She frequently serves on juries of international competitions, and has performed across the United States and Europe, as well as in Indonesia, Mexico, Iceland, New Zealand, Brazil, Australia, Canada, Russia, and China.



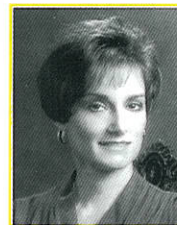
## ...for Collegiate Teachers of Piano Pedagogy

### Preparing Pedagogy Students for the Future

**Victoria McArthur, Coordinator**

All sessions, except as noted, in the Spring Room

- ✓ 2:00 **Keynote Address** "So What Do I Do Next?" A View of the Piano Major's Future in Music Nelita True *Oak Brook*
- 2:30 **Reality Check: Employment Opportunities for Today's Piano Majors** Linda Christensen
- 3:00 **Preparing Students for the Job Market** Martha Hilley, Pete Jutras, and Jane Magrath
- 4:00 **Group Discussion**
- 4:30 **Break**
- ✓ 5:00 **What I Wish I Had Known:** The "real world" from the perspective of recent graduates Thomas Jefferson, Victoria Johnson, Julie Kostuch, and Kelly Marquis
- 6:00 **Dinner Break**
- 7:30 **The Broader View:** Learning from experts in other music fields (*see page 10*)
  - Music Therapy: Frederick Tims *Hunt 1*
  - ✓ • Early Childhood Music: Lorna Lutz Heyge *Hunt 2*
  - Adult Learners: Michelle Conda *Hunt 3*
  - Music Education: Roseanne K. Rosenthal *York 1*
  - Music Industry: E.L. Lancaster *York 2*
  - Music Administration: Seth Beckman *York 3*
- 9:30 **Seminar Ends**



**Victoria McArthur** is Program Director of Piano Pedagogy and Group Piano at Florida State University, and a keyboard editor for

Alfred Publishing Co. She maintains an independent studio and writes educational piano music for students of all ages. She was the founding editor of the FJH Music Co. and co-authored *Piano Adventures Theory*, and *Piano Adventures Technique & Artistry* with Nancy and Randall Faber. She is co-author of the new Alfred piano method, the *Alfred Premier Piano Course*.

## Seminar for Collegiate Teachers of Pedagogy

### Presenters



**Linda Christensen** teaches class piano and music technology at Wayne State College, NE, where she has served as music department chair. Her degrees are from Weber State University, Southern Methodist University, and the University of Oklahoma. She chairs the NCKP Future Trends in Piano Teaching Committee.



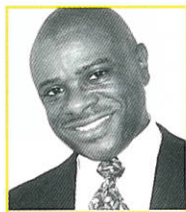
**Pete Jutras** maintains an independent teaching studio in Dallas, TX where he is an active adjudicator, composer, and author. He is also an adjunct instructor of piano pedagogy, MIDI technology, and adult piano classes at Southern Methodist University.



**Martha Hilley** is professor of group piano and pedagogy and a member of the Academy of Distinguished Teachers at the University of Texas at Austin. She has taught for International Workshops in Italy, Belgium, Hawaii, Australia, and Norway as well as for the Fairbanks Summer Arts Festival in Alaska and the Summer Keyboard Institute at Tunghai University in Taichung, Taiwan.



**Julie Kostuch** earned degrees in piano performance and piano pedagogy from the Lawrence University Conservatory of Music and from the University of Oklahoma. She is currently on the faculty at the New School for Music Study in Princeton.



**Thomas Wade Jefferson** recently completed his DMA in Piano Performance and Pedagogy at the Northwestern University School of Music. Jefferson is on the faculty of the Sherwood Conservatory of Music and is the music editor of the *Spirit and Truth* series for World Library Publications, Chicago.



**Jane Magrath** holds the Grant Endowed Chair in Piano Pedagogy at the University of Oklahoma where she serves as Director of Piano Pedagogy. She has written and edited more than 25 volumes for Alfred Publishing. Dr. Magrath received the 2001 MTNA Frances Clark Keyboard Pedagogy Award for her book *The Pianist's Guide to Standard Teaching and Performance Literature*.



**Victoria Johnson** is Assistant Professor and Coordinator of Piano Pedagogy at Louisiana State University. She holds degrees from the University of Oklahoma, Bowling Green State University, and Luther College. Her articles have appeared in *Piano Pedagogy Forum*, *Keyboard Companion*, and *Alfred's Piano Rendezvous*.

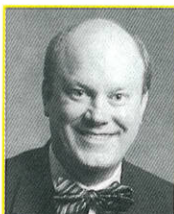


**Kelly Marquis**, B.M. in piano performance from Western Michigan University and MM in performance and pedagogy from the University of Oklahoma, is employed as Institutional Products Specialist for Meridian Music Company in Indianapolis, IN.

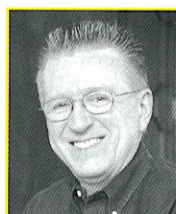
## The Broader View and Expanding Our Horizons

### Learning from experts in other music fields

Presenters for both the Seminar for Collegiate Teachers of Pedagogy and the Seminar for the Pedagogy Student and Young Professional



**Seth Beckman** is Assistant Dean for Academic Affairs, Director of Graduate Studies, and Professor of Music at Florida State University. A pianist, he maintains an active career as soloist and collaborator. He is also a published author, with articles on performing and pedagogy appearing in such journals as *American Music Teacher*.



**E.L. Lancaster** is Vice President and Keyboard Editor-in-Chief of Alfred Publishing Company. Formerly on the faculty of the University of Oklahoma, he draws upon his extensive teaching experience at all levels to guide the Alfred catalogue.



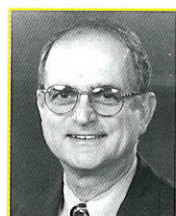
**Michelle Conda** is the Coordinator of Secondary Piano and Piano Pedagogy at the Cincinnati College-Conservatory of Music. She teaches adult piano classes for the University of Cincinnati's Communitary program, is editor of the Adult Study column for *Keyboard Companion* magazine, and chairs the NCKP Committee on Teaching Adults.



**Roseanne K. Rosenthal** is President Emeritus of VanderCook College of Music where she teaches coursework and directs graduate projects in music teacher education. Her research interests are in music teacher education, practice, and expression in music.



**Lorna Lutz Heyge** has been active in early childhood music since 1971. She has developed pedagogical materials in the USA, Germany, and with native authors in several Asian countries. She is founder of Kindermusik (1974) and Musikgarten (1993).



**Frederick Tims** is Associate Director for Graduate Studies at the Michigan State University School of Music and a past President of the National Association for Music Therapy. His worldwide presentations have focused on his research on music and wellness, medical uses of music, and improvisation.

### NCKP Committee on Independent Teachers

Susan See, Chair	Ann Bader
Alan Huckleberry	Sara McDaniel
Barbara Rivadeneira	Karen Thickstun

### NCKP Committee on the Pedagogy Student

Katie Goins and Timothy Shafer, Co-chairs

Amber Aaron	Laura Amoriello
Nan Baker	Sylvia Coats
Carla Davis	Becky Grausam
Julie Knerr	Rachel Snyder

## ...for the Independent Teacher

### Motivating the Teen-Age Student

**NCKP Committee on Independent Teachers**

**Susan See, Chair**



**Susan See** teaches over seventy students at Iowa Mennonite School and in her home studio. She holds

degrees from Truman State University and the University of Iowa. She appears as soloist, accompanist, and adjudicator and has contributed articles to *Keyboard Companion* and *Pan Pipes*.

All sessions will be held in the Oak Brook Ballroom

- 2:00 **Keynote Address** "So What Do I Do Next?" A View of the Piano Major's Future in Music Nelita True
- 2:30 **Motivating Teens at the Piano** John Ellis
- 3:30 **So Your Student Wants to Major in Music!** Preparing for the College Audition Experience Ingrid Clarfield
- 4:30 **Break**
- 5:00 **Capturing the Magic:** Cultivating Vitality in Student Performance Sara McDaniel and Nancy Kaesler
- 6:00 **Dinner with Robert and Clara** Karen Thickstun and the Butler University Summer Piano Camp
- 7:30 **The Adolescent Transfer Student:** Baggage Handling with Care Suzanne Guy
- 8:30 **Turning Teens "On" to Contemporary Music** Alan Huckleberry
- 9:30 **Seminar Ends**

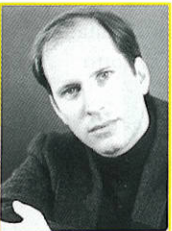
### Presenters



**Ingrid Clarfield**, Professor of Piano and Coordinator of the Piano Department at Westminster Choir College of Rider University, is an active performer, clinician, and author. Her books and editions are published by Alfred Publishing Company.



**Alan Huckleberry**, Assistant Professor of Piano Pedagogy and Chamber Music at the University of Iowa, is a sought-after soloist, collaborative artist, master class clinician, and pedagogy lecturer.



**John Ellis** is Assistant Professor of Piano and Director of Graduate Studies in Piano Pedagogy at the University of Michigan where he also administers the preparatory department and the class piano curriculum. He is in demand as a recitalist, master class clinician, adjudicator, and lecturer on piano pedagogy.



**Nancy Kaesler**, NCTM, (left) is President-Elect of Colorado State MTA. She is an active adjudicator, clinician, and author of articles on piano pedagogy and studio management.

**Sara McDaniel**, NCTM, is active as a performer, teacher, adjudicator, and clinician. She teaches all ages

and levels, including college piano and pedagogy, and presents workshops for state and national meetings.



**Suzanne Guy** is a columnist for *Clavier*, an IMT in Norfolk, VA, and has co-authored the *Expressive Etudes* and *Focus on Melody* series (FJH). Her children's picture books, *The Music Box* and *The Orchestra*, have been honored in presentations at the Smithsonian and the Metropolitan Museums.



**Karen Thickstun** is the director of the Butler Community Arts School and the Butler University Piano Camps. As adjunct faculty, she teaches piano pedagogy, applied piano, and keyboard harmony, and maintains a home studio in Nashville, IN.

# ...for the Pedagogy Student and Young Professional

## Making the Transition from Student to Professional

**NCKP Committee on the Pedagogy Student**

**Katie Goins and Timothy Shafer, Co-Chairs**

All sessions, except as noted, in the York Room

- 2:00 **Keynote Address** "So What Do I Do Next?" A View of the Piano Major's Future in Music Nelita True *Oak Brook*
- 2:30 **Preparing for the Job Market** Linda Holzer
- ✓ 2:45 **Learning from the Experts** Robert A. Duke
- 3:45 **Break**
- 4:15 **Equipping Ourselves to Teach**
  - Option 1: Developing Your Resume* Martha Hilley and Rachel Snyder *York 1*
  - Option 2: Models of Independent Studios and Ideas for Development* Nancy Longmyer and Helen Smith Tarchalski *York 3*
- 5:15 **Analysis of Our Own Teaching** Gail Berenson and Sylvia Coats
- ✓ 6:15 **Piano Pedagogy Pizza Party**
- 7:30 **Expanding Our Horizons** (See page 10)
  - Music Therapy: Frederick Tims *Hunt 1*
  - Early Childhood Music: Lorna Lutz Heyge *Hunt 2*
  - Adult Learners: Michelle Conda *Hunt 3*
  - Music Education: Roseanne K. Rosenthal *York 1*
  - Music Industry: E.L. Lancaster *York 2*
  - Music Administration: Seth Beckman *York 3*
- 9:30 **Seminar Ends**



**Katie Goins** is pursuing the DMA in Music and Human Learning with a specialization in Piano Pedagogy at the University of Texas at Austin. The

2003 recipient of the NFMC Lynn Freeman Olson Piano Pedagogy Award, she earned the MM in Piano Performance and Pedagogy at Ohio University, where she studied with Gail Berenson.



**Timothy Shafer** is Professor of Piano at Penn State where he teaches studio piano and coordinates the class piano and pedagogy

programs. He is an active performer, clinician, and adjudicator for professional music organizations and colleges, and is a frequent soloist with regional orchestras.

## Presenters



**Gail Berenson** is Professor of Piano and Chair of the Keyboard Division at Ohio University, Athens. An active performer and chamber music collaborator, and a noted expert on musician wellness issues, she is co-author of *A Symposium for Pianists and Teachers: Strategies to Develop Mind and Body for Optimal Performance*. She is President-Elect of MTNA.



**Sylvia Coats**, faculty member at Wichita State University, performs with the Sotto Voce Trio, has served as MTNA West Central Division President, and is on the MTNA Board of Directors.



**Robert A. Duke** is the Marlene and Morton Meyerson Centennial Professor of Music and Human Learning, University Distinguished Teaching Professor, and Director of the Center for Music Learning at the University of Texas at Austin.

## Presenters



**Martha Hilley** is professor of group piano and pedagogy and a member of the Academy of Distinguished Teachers at the University of Texas at Austin. She has taught for International Workshops in Italy, Belgium, Hawaii, Australia, and Norway as well as for the Fairbanks Summer Arts Festival in Alaska and the Summer Keyboard Institute at Tunghai University in Taichung, Taiwan.



**Rachel Snyder** directed the piano preparatory program at Penn State University before becoming the executive director of Music Arts School, a community music school in Highland Park, IL. She has written for *Keyboard Companion* and *American Music Teacher*.



**Nancy Longmyer** maintains a studio in Falls Church, VA, where she teaches piano, voice, music theory, and pre-school music. With degrees from West Chester University, Columbia University, and The Juilliard School of Music, she is author of the ear training program, *Listen and Learn*.



**Helen Smith Tarchalski** is an independent teacher in Gaithersburg, MD, and teaches at Anne Arundel Community College. In addition to teaching and performing, she has given presentations throughout the U.S. and serves as Associate Editor for *Keyboard Companion*. She studied with Fernando Lares at Peabody Conservatory.

[www.music.uiuc.edu](http://www.music.uiuc.edu)

**Reid Alexander**  
Piano Pedagogy

**Christos Tsitsaros**  
Piano Pedagogy

**Joan Hickey**  
Piano Pedagogy/Jazz

**Timothy Ehlen**  
Piano

**William Heiles**  
Piano

**Ian Hobson**  
Piano

**Dennis Helmrich**  
Accompanying

**Charlotte Mattax**  
Organ/Harpsichord

**Dana Robinson**  
Organ/Harpsichord

**John "Chip" Stephens**  
Jazz

**School of Music**  
UNIVERSITY OF ILLINOIS  
AT URBANA-CHAMPAIGN  
KARL KRAMER, DIRECTOR

- Comprehensive degree programs in piano pedagogy and piano performance
- Consistently ranked among the best American music schools
- Excellent facilities
- Numerous financial awards
- Thousands of successful alumni

**VARIETY OF ACADEMIC PROGRAMS**  
Bachelor's, Master's, and Doctoral degrees

*For more information, please contact:*  
Music Admissions Office  
Phone: 217-244-7899  
E-mail: [musadm@music.uiuc.edu](mailto:musadm@music.uiuc.edu)

College of Fine and Applied Arts  
UNIVERSITY OF ILLINOIS AT URBANA-CHAMPAIGN

Accredited institutional member of the National Association of Schools of Music since 1933.

## Home Concert Xtreme™



New Version!  
**Score-following Software**  
for the 21<sup>st</sup> Century Pianist,  
Student, and Teacher

Practice Piano Concertos

Improve Sight Reading

Cultivate Ensemble Skills

Use with Your  
Favorite Piano Method



Intelligent accompaniment follows  
your tempo and dynamics as you play

Works with Standard MIDI Files

Compatible with SMFs from most  
publishers, including Alfred, Hal  
Leonard, FJH Music, and Warner Bros.

Automatically "turns the pages"

Excellent practice tool for the student  
to use at home

Available for Macintosh and Windows

**\$99.00**

*Home Concert puts the player  
on the conductor's podium,  
making MIDI files more musi-  
cal and rewarding. Neither  
students nor professionals  
should miss the experience.*

Phillip Keveren, MIDI Or-  
chestrator and Co-Author  
*Hal Leonard Student Library*

To place an order, or to learn  
about our new product,  
**Classroom Maestro™**,  
please visit:  
[www.timewarptech.com](http://www.timewarptech.com)

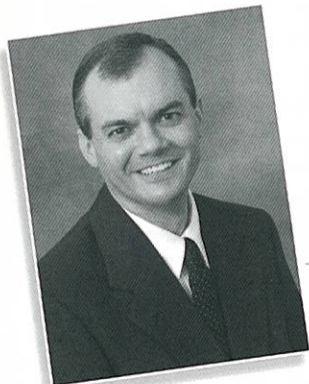


### The University of South Carolina School of Music

is pleased to announce Dr. Scott Price's workshop,  
"Special Needs Students and Piano Teaching,"  
on Thursday, August 4 at the National Conference  
on Keyboard Pedagogy.

Dr. Scott Price is Associate Professor of Piano, Piano  
Pedagogy, and Coordinator of Group Piano at the  
University of South Carolina School of Music.

Dr. Price is also creator and editor-in-chief of  
the online journal Piano Pedagogy Forum.



Dr. Scott Price



The University of South Carolina Piano faculty,  
from left to right:  
Professor Charles Fugo, Professor Marina Lomazov,  
Professor Joseph Rackers, Professor John Williams,  
Professor Scott Price

### The University of South Carolina School of Music offers more than 20 degrees, including:

#### Bachelor of Arts in Music Bachelor of Music, with emphases in:

- Composition
- Jazz Studies
- Music Education
- Music Theory
- Performance
- Piano Accompaniment
- Piano Pedagogy

#### Doctor of Musical Arts in:

- Composition
- Conducting
- Performance
- Piano Pedagogy

#### Doctor of Philosophy in Music Education

For more information about the  
University of South Carolina  
School of Music, please  
contact:

#### Certificate of Graduate Study in Music Performance

#### Master of Music in:

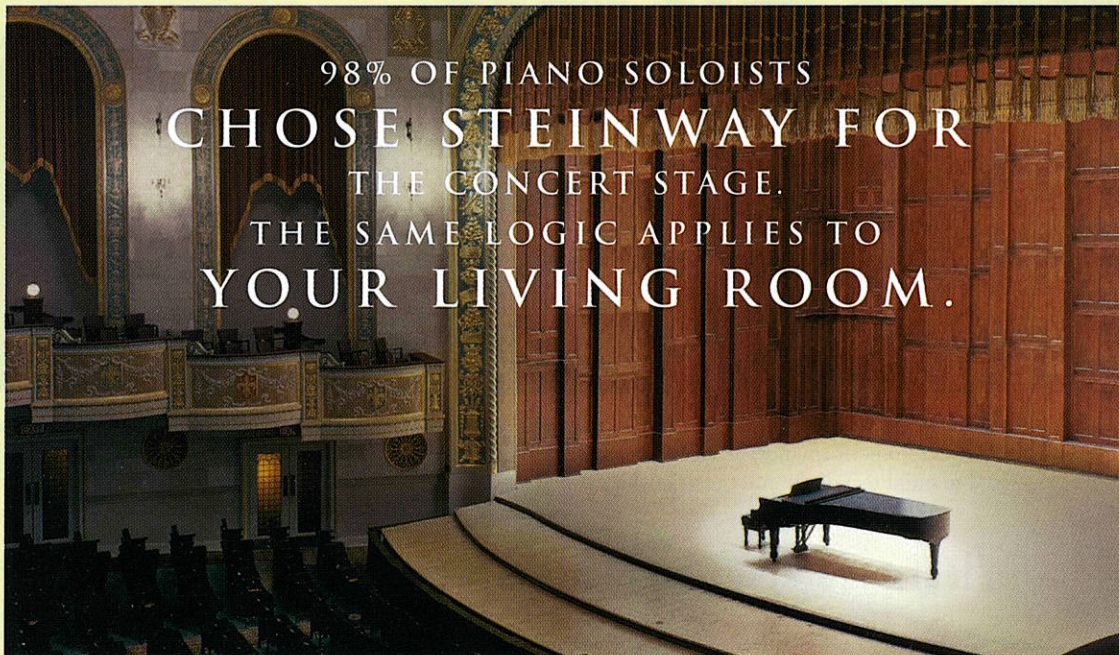
- Composition
- Conducting
- Jazz Studies
- Music Education
- Music History
- Music Theory
- Opera Theatre
- Performance
- Piano Pedagogy

#### Jennifer Jablonski

Director of Music Admissions  
803-777-6614  
[jjablonski@sc.edu](mailto:jjablonski@sc.edu)  
[www.music.sc.edu](http://www.music.sc.edu)







98% OF PIANO SOLOISTS  
**CHOSE STEINWAY FOR**  
 THE CONCERT STAGE.  
 THE SAME LOGIC APPLIES TO  
**YOUR LIVING ROOM.**

2003/2004 CONCERT SEASON RESULTS:  
 STEINWAY: 418 OTHER PIANOS: 7

2003/2004 Concert Season:	Steinway   Others		Steinway   Others		Steinway   Others
Akron Symphony Orchestra	2   0	Greensboro Symphony Orchestra	2   0	Omaha Symphony Orchestra	3   0
Alabama Symphony Orchestra	7   0	Greater Trenton Symphony Orchestra	3   0	Orchestre Symphonique de Montréal	9   0
Albany (NY) Symphony Orchestra	1   0	Hartford Symphony Orchestra	4   0	Oregon Symphony	4   0
Atlanta Symphony Orchestra	10   1	Houston Symphony	13   0	Orlando Philharmonic Orchestra	5   0
Austin Symphony Orchestra	5   0	Huntsville Symphony Orchestra	4   0	Pensacola Symphony Orchestra	2   0
Baltimore Symphony Orchestra	13   0	Indianapolis Symphony Orchestra	11   0	The Philadelphia Orchestra	12   0
Bismarck-Mandan Symphony Orchestra	1   0	Jacksonville Symphony Orchestra	5   0	The Phoenix Symphony	5   0
Boise Philharmonic	1   0	Kansas City Symphony	3   0	Pittsburgh Symphony Orchestra	4   0
Boston Symphony Orchestra	10   0	Knoxville Symphony Orchestra	4   0	Portland Symphony Orchestra	1   0
Buffalo Philharmonic Orchestra	3   0	Lexington Philharmonic	2   0	Quad City Symphony Orchestra	1   0
Calgary Philharmonic Orchestra	6   0	Long Beach Symphony Orchestra	2   0	Reno Chamber Orchestra	1   0
Charlotte Symphony	2   0	Los Angeles Philharmonic	9   0	Richmond Symphony	2   0
Canton Symphony Orchestra	3   0	The Louisville Orchestra	5   0	Rochester Philharmonic Orchestra	8   0
Chicago Symphony Orchestra	7   1	Memphis Symphony Orchestra	3   0	Saint Louis Symphony Orchestra	9   0
Cincinnati Symphony Orchestra	10   0	Milwaukee Symphony Orchestra	4   0	Saint Paul Chamber Orchestra	4   0
The Cleveland Orchestra	6   0	Mississippi Symphony Orchestra	1   0	San Diego Symphony	4   0
Colorado Symphony Orchestra	7   0	The Minnesota Orchestra	7   0	San Francisco Symphony	6   0
Columbus Symphony Orchestra	5   0	Mobile Symphony	2   0	Seattle Symphony Orchestra	10   1
Dallas Symphony Orchestra	7   0	Naples Philharmonic Orchestra	2   0	Syracuse Symphony Orchestra	5   0
Dayton Philharmonic Orchestra	4   1	Nashville Symphony	2   0	Toronto Symphony Orchestra	11   0
Detroit Symphony Orchestra	7   0	National Symphony Orchestra	10   0	Tucson Symphony Orchestra	3   0
East Texas Symphony Orchestra	1   0	New Jersey Symphony Orchestra	9   0	Utah Symphony	6   0
Erie Philharmonic	2   0	New Mexico Symphony Orchestra	1   0	Vancouver Symphony	11   0
Eugene Symphony	1   0	New West Symphony	3   0	Virginia Symphony	2   0
The Florida Orchestra	4   0	New York Philharmonic	17   1	West Virginia Symphony Orchestra	2   0
Florida West Coast Symphony	4   0	The New York Pops	2   0	Wichita Symphony Orchestra	3   0
Fox Valley Symphony	1   0	North Carolina Symphony	4   2	Winnipeg Symphony Orchestra	9   0
Fort Worth Symphony Orchestra	5   0	Oklahoma City Philharmonic Orchestra	3   0	Winston-Salem Piedmont Triad Symphony	1   0
Fresno Philharmonic Orchestra	2   0			Youngstown Symphony Orchestra	1   0

You don't need the exceptional talent of a concert artist to share an appreciation for the uncompromising performance of a Steinway piano. And, because each Steinway is handmade to the same exacting standards, the legendary richness, power and emotion of the Steinway sound are



right at your fingertips. No wonder that people who have a passion for music want to fill their homes with the joy only a Steinway piano can bring. For information about our Concert & Artist program and a current roster of Steinway artists, please call 1-800-366-1853.

**STEINWAY & SONS**

One Steinway Place, Long Island City, New York 11105. 1-800-366-1853. [www.steinway.com](http://www.steinway.com)

©2005 Steinway & Sons. Steinway and the Lyre are registered trademarks. Photo courtesy of the Detroit Symphony Orchestra.

# KEYS TO SUCCESS

Study at Westminster



Performance and Pedagogy are at the heart of what we offer piano students at Westminster Choir College of Rider University. Whether your interest is in solo performance, pedagogy, or accompanying and coaching, we offer unique learning and performance opportunities designed to build technique and musicianship.

To learn more, log on to <http://westminster.rider.edu>

**UNDERGRADUATE AND GRADUATE DEGREES • BACHELOR OF MUSIC** – Voice Performance – Organ Performance – Piano – Music Education – Sacred Music – Theory/Composition – Music Theater • **BACHELOR OF ARTS IN MUSIC • MASTER OF MUSIC** – Choral Conducting – Music Education – Composition – Sacred Music – Voice Pedagogy and Performance – Organ Performance – Piano Performance – Piano Pedagogy and Performance – Piano Accompanying & Coaching • **MASTER OF MUSIC EDUCATION • MASTER OF VOICE PEDAGOGY**

Westminster Choir College of Rider University • 101 Walnut Lane • Princeton, NJ 08540 • 1-800-962-4647 • [wccadmission@rider.edu](mailto:wccadmission@rider.edu)



**Schaum's Piano Teaching Library**

for Today's Students . . .  
Tomorrow's Musicians

**Thursday, August 4th Showcase**  
By Wesley and Jeff Schaum

**Come visit Our Booth!**

1-800-786-5023 [www.schaumpiano.net](http://www.schaumpiano.net)



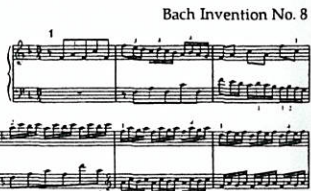

## Mapping Music: For Faster Learning and Secure Memory

*A Guide for Piano Teachers and Students*

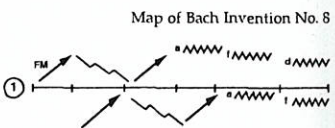
2nd Edition by Rebecca Payne Shockley, D.M.A.

- Make practice more enjoyable
- Perform with confidence
- Develop reading skills
- Learn quickly

Includes over 50 examples by Bach, Bartók, Chopin, Gurlitt, Kabalevsky, Mozart, Prokofiev, Schubert, Tchaikovsky, and others.



Bach Invention No. 8



Map of Bach Invention No. 8

**Order your copy today for \$21.95\***  
800-736-0070  
Customer Service (U.S. only)

**A-R Editions, Inc.**  
Publications • Production Services  
8551 Research Way, Suite 180, Middleton, WI 53562 USA  
Fax: 608-831-8200 • <http://www.areditions.com>

\*Shipping charge: U.S. (UPS) \$7.00 for the first book; \$.75 each additional.  
Foreign surface \$10.00 for the first book; \$5.00 each additional.  
Wisconsin residents please add applicable sales tax.

Introducing

# Alfred's Premier Piano Course

**An All-New Method for Today's Students**

Dennis Alexander • Gayle Kowalchyk • E. L. Lancaster • Victoria McArthur • Martha Mier

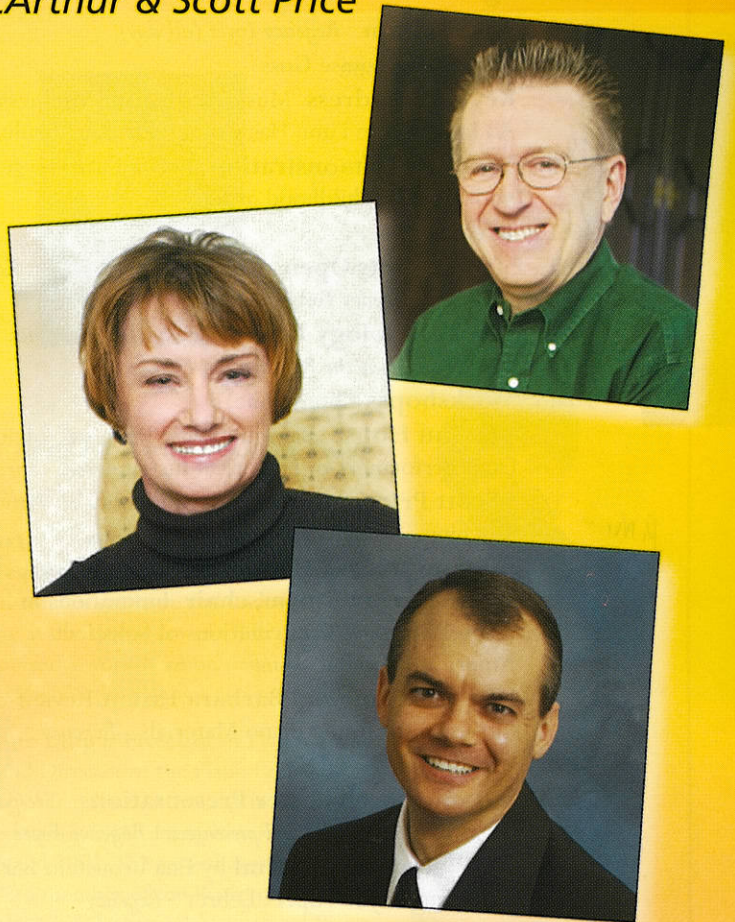
Presented by E. L. Lancaster, Victoria McArthur & Scott Price

**Thursday, August 4, 2005**

**1:00 – 1:45 p.m.**

**Regency Ballroom**

Inspire your students, invigorate your teaching and involve parents with the innovative materials in this exciting new piano method.



**FREE TO ATTENDEES!**

Receive 4 new books, 2 CDs and flash cards  
from Alfred's ALL-NEW *Premier Piano Course!*

(Total retail value: \$36.75)

**Visit Us at Alfred Booth #4-6!**

*IT BRINGS US GREAT JOY  
to announce the newest addition  
to the Alfred family, Warner Bros.  
Publications. The best in educational  
music and the powerhouse of pop...  
Meet the new Alfred.*

The Best  
of Both Worlds.



# Thursday: Conference Day One

## Conference Day One: Thursday, August 4

All Plenary Sessions will be held in the Regency Ballroom

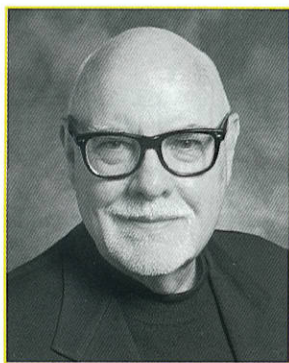
### Morning

- 8:00 **Registration** Regency Foyer (all day)
- ✓ 8:30 **Welcome** Louise Goss
- Keynote Address** Music Making and Wellness: An Idea Whose Time Has Come Dr. Karl Bruhn
- ✓ 9:30 **Teaching Demonstration** Lorna Lutz Heyge with an early childhood group
- 10:15 **Break**
- 10:15-2:00 **Exhibits Open** See pages 30-31. Essex, Kent, and Regency Foyer
- 10:45-1:00 **Technology Hubs** See page 26 for topics. Sign up at the Registration Desk.
- 10:45 **Workshops** (choose one)
- **LeAnn House** Baroque Style: Practical Advice from Performers of Historical Instruments *Spring*
  - ✓ **Scott Price** Special Needs Students and Piano Teaching *Oak Brook*
  - **Committee on Historical Perspectives, Connie Arrau Sturm, chair** Innovations in Piano Pedagogy: Contributions of Selected American Women *Hunt*
  - **Yu-Jane Yang and Barbara Fast** A Review of Recently-Published Piano Materials *Regency*
- 11:30 **Lunch**
- 11:30-1:00 **Research Poster Presentations** See pages 27-29 for titles and presenters. Regency Foyer
- 12:00-12:45 **Noontime Recital** by Ena Bronstein Barton and Phyllis Alpert Lehrer *Regency*

### Afternoon

- ✓ 1:00 **Industry Showcases**  
Alfred Publishing Co. *Regency*  
Royal American Conservatory Examinations *Oak Brook*  
Schaum Publications *Spring*
- ✓ 2:00 **Mini-Recital** by students from the Harper College Piano Preparatory Department
- ✓ 2:15 **Teaching Demonstration:** Jean Barr with Liza Ali (11) and Nora Ali (15)
- 3:00 **Break**
- 3:00-7:30 **Exhibits Open** See pages 30-31. Essex, Kent, and Regency Foyer
- 3:30-5:30 **Technology Hubs** See page 26 for topics. Sign up at the Registration Desk.
- ✓ 3:30 **Workshops** (choose one) See above for the Thursday workshop offerings.
- 4:15-5:15 **Research Poster Presentations** See pages 27-29 for titles and presenters. Regency Foyer
- 4:30 **Wrap-Up Discussions** What I have learned today that will improve my teaching tomorrow. See registration packet for room assignment.
- ### Evening
- 5:15 **Dinner Break**
- ✓ 8:00 **MTNA National Piano Auditions Winners Recital**  
**Grace Ma**, 2004 Junior Piano Competition Winner (Sponsor: Baldwin Piano, Inc.)  
**Pallavi Mahidhara**, 2005 Senior Piano Competition Winner (Sponsor: Yamaha Corporation of America)  
**Brandon Stewart**, 2005 Young Artist Piano Competition Winner (Sponsor: Steinway & Sons)
- ✓ 9:15 **Reception** Regency Foyer

Thursday



## Keynote Speaker

### Dr. Karl Bruhn

#### Music Making and Wellness: An Idea Whose Time Has Come

Karl Bruhn initiated the Music Making and Wellness Project and is recognized worldwide as the “father of music making and wellness.” He remains a respected and outspoken advocate for incorporating music making into healthcare. With Barry Bittman, MD, he is working on research projects focused on

developing and scientifically testing the biopsychosocial aspects of recreational music making. He has been president of the American Music Conference, the National Piano Music Foundation, the National Piano Manufacturers Association International, and Presidential Advisor to the American Music Therapy Association.

## Teaching Demonstrations

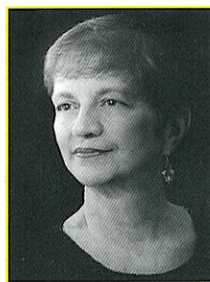


### 9:30 **Lorna Lutz Heyge with an early childhood group**

**Lorna Lutz Heyge** has been active in early childhood music since 1971. She has developed pedagogical materials in the U.S., Germany, and with native authors in several Asian countries. She is founder of Kindermusik (1974) and Musikgarten (1993).

### 2:15 **Jean Barr with Liza Ali (11) and Nora Ali (15)**

**Jean Barr** is Professor of Piano Accompanying and Chamber Music at the Eastman School of Music. In 1994, the Eastman School of Music honored her with the Eisenhart Award for Excellence in Teaching, and in 2004 she received the Susan B. Anthony Lifetime Achievement Award from the University of Rochester.



## Technology Hubs:

see page 26

## Research Poster

### Presentations:

see pages 27-29

### Exhibits:

see pages 30-31

Thursday

## Workshops 10:45 and 3:30



### **LeAnn House**

#### **Baroque Style: Practical Advice from Performers of Historical Instruments**

**LeAnn House** holds degrees in both performance and musicology from Kansas State

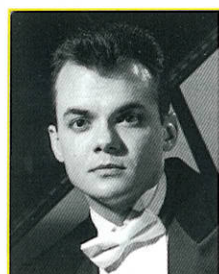
University and the University of North Carolina at Chapel Hill. She teaches piano, harpsichord, music theory, and piano pedagogy at The College of St. Scholastica in Duluth, and is currently Music Director of the Minnesota Ballet.

### **Barbara Fast and Yu-Jane Yang**

#### **Review of New Piano Publications**

**Barbara Fast** (top photo), Associate Professor of Piano Pedagogy, coordinates the group piano program and teaches graduate and undergraduate piano pedagogy at the University of Oklahoma. She frequently presents workshops on new materials, historical keyboard pedagogy, and technology.

**Yu-Jane Yang** is Professor of Piano/Piano Pedagogy and Director of the Piano Preparatory Program at Weber State University in Utah. Dr. Yang was listed in *Who's Who Among America's Teachers* in 1996 and 2002. She served as president of UMTA and is a member of the Board of Trustees for the Gina Bachauer International Piano Foundation.



### **Scott Price**

#### **Special Needs Students and Piano Teaching**

**Scott Price** is Associate Professor of Piano, Piano Pedagogy, and Coordinator of Group Piano at the University of South Carolina School of Music. He is creator and

editor-in-chief of the on-line journal *Piano Pedagogy Forum*, and has presented at national conventions of MTNA, MENC, and NCKP. He has specialized in working with autistic and disabled children for six years.

### **Committee on Historical Perspectives,**

#### **Connie Arrau Sturm, chair**

#### **Innovations in Piano Pedagogy: Contributions of Selected American Women**

**Connie Arrau Sturm** coordinates piano pedagogy programs at West Virginia University. The author/clinician of over seventy-five publications/presentations, she continues to conduct historical research on the contributions of American women to the field of piano pedagogy.



## Noontime recital 12:00 - 12:45

### *Ena Bronstein Barton and Phyllis Alpert Lehrer*

**Ena Bronstein Barton** (right) is an active performer who heads the Piano Department at Westminster Conservatory and is on the faculty of the Westminster Choir College of Rider University. Ms. Barton is a disciple of Claudio Arrau and a graduate of the University of Chile.

**Phyllis Alpert Lehrer** directs the graduate program in piano pedagogy at Westminster Choir College of Rider University where she is Professor of Piano. She is known internationally as a performer, clinician, and author. She is a graduate of the University of Rochester and The Juilliard School of Music.



### *2:00 Mini-Recital by students from the Harper College Piano Preparatory Department*

## *MTNA Winners' Recital*

Thursday evening's recital features performances by the national winners of the MTNA 2004 Baldwin Junior High School, 2005 Yamaha High School, and 2005 Steinway & Sons Collegiate Artist piano competitions. Gary Ingle, MTNA Executive Director, will preside.

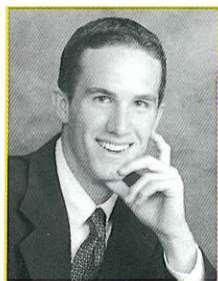


### *2004 Junior Piano Competition Winner*

Sponsored by Baldwin Piano, Inc.

**Grace Ma**, 13, is from Phoenix, AZ, where she studies with Mr. Fei Xu. In addition to winning the 2004 MTNA Junior Baldwin Piano Competition, she has also been first place winner of the Phoenix Symphony Guild Young Musician Concerto Competition, the Stravinsky Award International Piano Competition, the

Winners' Showcase of the 2003 Arizona Young Artist Piano Competition, the Outstanding Festival Performance Award, and the Emily Butcher Award. Her hobbies include drawing, reading, writing, playing soccer, and video games.



### *2005 Young Artist Piano Competition Winner*

Sponsored by Steinway & Sons

**Brandon Stewart** is a piano performance major at Brigham Young University, studying with Irene Peery-Fox. Before college, he studied with Susan Bana in Orange, CA. Brandon recently won the BYU Concerto Competition and performed with the BYU Philharmonic. He won first place in the International Young Artist Peninsula

Competition, the Los Angeles Liszt Competition, and the Glendale Piano Competition, and was winner in the Junior Gina Bachauer Competition. He is a Young Artist Guild winner for the state of California.

### *2005 Senior Piano Competition Winner*

Sponsored by Yamaha Corporation of America – Piano Division



### *Pallavi Mahidhara,*

17, made her orchestral debut at age 10. Since then, she has performed regularly in solo recitals and with orchestras. Pallavi was the national winner of the 2001 MTNA Junior Piano Competition, grand prize winner in the 2003 Kingsville International Young Performers Competition, and a prize winner in the 2004 Kosciuszko Competition. Pallavi studies piano with Julian Martin and Rachel Franklin. She will attend the Curtis Institute next year.

## Industry Showcases 1:00 - 2:00

### Alfred (Regency)

#### **Introducing Alfred's Premier Piano Course – An All-New Method for Today's Students**

Inspire your students, invigorate your teaching, and involve parents with the innovative materials in this exciting new piano method. All attendees will receive four new books, two CDs and flash cards from *Alfred's Premier Piano Course*.

Presenters: E.L. Lancaster, Victoria McArthur, and Scott Price

### Royal American Conservatory (Oak Brook)

Royal American Conservatory Examinations benefit everyone.

- For the Student ... motivation to achieve a goal and continue study.
- For the Parent ... involvement with their child in skill development, emphasizing effort, achievement and high self-esteem.
- For the Teacher ... an excellent curriculum.

Find out how you can get involved in this acclaimed program.

Presenter: Dr. Scott McBride Smith

### Schaum (Spring)

#### **A New Generation of Methods and Technic – Clever Teaching Ideas Motivate Students**

**Masters of Technic:** Imagine a technic series that's fun and melodious, derived from 19th century masters!

**Making Music Method:** Consider a creative method with a new beginning, adopting major changes in presentation sequence and format for greater student success. Explore Schaum's rewarding music for tomorrow's musicians. Free music to attendees.

Presenters: Jeff Schaum and Wesley Schaum

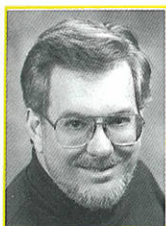
Thursday

## Wrap-Up Discussions

### **What I have learned today that will change my teaching tomorrow**

4:30 See registration packet for room assignment

### Discussion leaders



**Reid Alexander** is a past recipient of a campus Award for Teaching Excellence at the University of Illinois, and holds degrees in piano performance and a doctorate from Vanderbilt University. As one of America's respected piano pedagogues, he has presented throughout the U.S. and abroad.



**Brad Beckman** holds degrees from Illinois Wesleyan University and the University of North Texas where he is currently Lecturer in Piano. He serves as Coordinator for the Texas Music Teachers Association's Performance Contest and is a past President of the Plano Music Teachers Association.



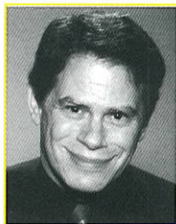
**Ann Bader** is the creator of *treasuresforpiano.com*, designed to aid teachers in the selection of repertoire and materials. She recently received a grant to study levels assigned to piano repertoire.



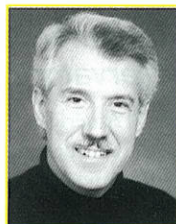
**Cynthia Benson** teaches group piano and piano pedagogy at Bowling Green State University, OH, and served as a foreign expert at Jimei University in Xiamen, P. R. of China. Her articles have appeared in *International Journal of Music Education*, *Update: Applications of Research in Music Education*, *Journal of Technology in Music Learning*, *American Music Teacher*, *Keyboard Companion*, and *Piano Pedagogy Forum*.

continued on page 22

## Discussion Leaders



**Bruce Berr** is a nationally-recognized independent and college teacher of piano and pedagogy, as well as an educational composer and clinician. His articles on music and teaching have appeared in all of the major piano journals, and he is an Associate Editor and webmaster of *Keyboard Companion* magazine.



**William Hughes** teaches piano and piano literature on the faculty of Indiana State University. He earned his doctorate at Eastman (with Barry Snyder). His first love is teaching, he is active as an adjudicator and clinician, and has been a part of the National Conference since the late 1980s.



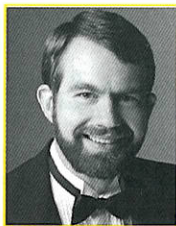
**Kathryn Fouse** is Associate Professor of Music at Samford University in Birmingham, AL, where she is the Coordinator of Piano Pedagogy and Class Piano. In addition to her commitment to education, she maintains an active career as a solo pianist and accompanist.



**Jessica Johnson** serves as Director of Graduate Piano Pedagogy studies at the University of Wisconsin-Madison. She has given presentations at national conferences and held residencies at universities throughout the U.S., Canada, and China.



**Ann M. Gipson** has recently been appointed Associate Professor of Music and Director of Piano Pedagogy Studies at Texas Christian University. She has held faculty positions at Baylor University and Oklahoma Baptist University.



**T. J. Lymenstull** teaches at Interlochen Arts Academy where he has built a studio of outstanding young pianists from around the world. Formerly Associate Professor of Piano Pedagogy at USC, Lymenstull is a frequent guest lecturer and adjudicator, and gives masterclasses in Japan, Korea, China, Singapore, and Taiwan.



**Jody Graves** maintains a diverse performance schedule as soloist and collaborative artist in the U.S. and abroad. She is a member of The Sapphire Trio and has been a presenter at numerous state, national, and international conferences. Ms. Graves is currently Director of Piano Studies at Eastern Washington University.



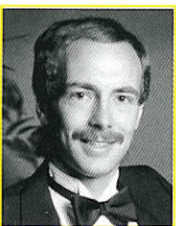
**Naomi Oliphant**, Associate Dean of the University of Louisville School of Music, is recipient of the university's Distinguished Teaching Award. She is an active performer and lecturer and Senior Editor of the *Kentucky Music Teacher*.



**Andrew Hisey** holds advanced degrees in piano performance and pedagogy from the University of Michigan. He served as Professor of Group Piano and Piano Pedagogy at the Oberlin Conservatory of Music from 1994-2005, and has recently relocated to Minnesota.



**Rebecca Shockley** is Professor of Piano Pedagogy and Class Piano Coordinator at the University of Minnesota. The author of *Mapping Music* (A.R. Editions 1997), she has given workshops throughout the U.S. and in England, Canada, Taiwan, China, and Korea.



**Dale Wheeler** coordinates the music department of Red Deer College in Alberta. He is active as a recitalist, accompanist, adjudicator, and clinician, and is a regular columnist for *Clavier*. His articles and research have recently appeared in *Music Alberta*, *American Music Teacher*, and *The Journal of the American Liszt Society*.



# Introducing a Whole New Series of Clavinova Advantages.



THE BEST DIGITAL PIANOS now make teaching and learning more enjoyable. Introducing the new Yamaha Clavinova® CVP300 SERIES, the successor to MMR magazine's 2003 "Digital Piano Line of the Year." Yamaha has added features and streamlined operations so you can do more than ever before—and do it easily. • Every CVP300 model includes a PIANO button that instantly turns the Clavinova into a virtual grand piano with a beautifully pure acoustic tone. Every model displays scores directly on screen and automatically turns the "pages" for your students. Every model features an internet direct connection for downloading songs and styles without a computer; compatibility with XG, DDC, General MIDI and GS formats so you can utilize thousands of online music titles; and SmartMedia™ and floppy disk drives for saving files and archiving student performances. Finally, every CVP300 model comes with a choice of finishes to match your decor. • Starting from this solid foundation, available on the CVP301, the CVP303 adds a microphone input and vocal harmony, so when students leave, you can enjoy a night of karaoke with friends. • The CVP305 and CVP307 incorporate a large color screen with an impeccably organized readout of all settings. The incredibly responsive

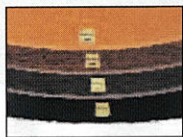
GH3 graded hammer action keyboard, with its ability to repeat the same note with perfect articulation, also makes its entrance. • The top-of-the line CVP309 showcases a beautiful polished ebony or



polished mahogany finish and Yamaha's Natural Wood Keyboard—with authentic acoustic piano keys. • For details on all the new Clavinova advantages, visit [yamaha.com](http://yamaha.com) or a Clavinova dealer today.

**Clavinova**  
The Advantage  
THE GOLD STANDARD  
**YAMAHA**

©2005 Yamaha Corporation of America. [www.yamaha.com](http://www.yamaha.com). SmartMedia is a trademark of its owner.





## *Degree Programs*

B.M. in Performance

B.M. in Performance with Pedagogy Emphasis

M.M. in Performance

M.M. in Performance and Pedagogy

M.M.E. in Music Education with Piano Pedagogy  
Emphasis

B.A. in Music

Artist Certificate in Piano and Organ

# Preserving the Legacy, Defining the Future

## Keyboard Studies and Pedagogy SMU-Meadows School of the Arts

### *Keyboard Faculty*

Joaquín Achúcarro, piano

Alessio Bax, piano

Samuel S. Hölland, piano pedagogy

David Karp, piano

Matthew Kline, piano pedagogy

Catharine Lysinger, piano pedagogy

Carol Leone, head of piano

Alfred Mouledous, piano

Larry Palmer, harpsichord and organ

---

SMU-Meadows School of the Arts  
Division of Music  
PO Box 750356  
Dallas, TX 75275-0356  
Ph. 214.768.1951  
Fax 214.768.4669  
music@smu.edu



For more information on the Meadows School of the Arts, please visit [meadows.smu.edu](http://meadows.smu.edu).



SMU | MEADOWS  
SCHOOL OF THE ARTS

# The New Piano of Choice

*Around the globe, the world's finest pianists are making Kawai the new international piano of choice.*

10th Tchaikovsky Int'l Piano Competition  
Top Two Prize Winners Selected Kawai EX

9th Van Cliburn Int'l Piano Competition  
First Prize Winner Selected Kawai EX

14th Int'l Chopin Piano Competition  
2nd Prize Winner Selected Kawai EX

5th Dublin Int'l Piano Competition  
First Prize Winner Selected Kawai EX

13th Jose Iturbi Int'l Piano Competition  
Top Three Prize Winners Selected Kawai EX

1st Rachmaninoff Int'l Piano Competition (USA)  
First Prize Winner Selected Kawai EX

23rd William Kapell Int'l Piano Competition  
All Three Prize Winners Selected Kawai EX

42nd ARD Int'l Piano Competition  
First Prize Winner Selected Kawai EX

2nd Rachmaninoff Int'l Piano Competition  
First Prize Winner Selected Kawai EX

45th Ferruccio Busoni Int'l Piano Competition  
First Prize Winner Selected Kawai EX

11th Santander Int'l Piano Competition  
First Prize Winner Selected Kawai EX

8th Premio Dino Ciani Int'l Piano Competition  
First Prize Winner Selected Kawai EX

12th Vianna da Mota Int'l Piano Competition  
First Prize Winner Selected Kawai EX

2nd Hamamatsu Int'l Piano Competition  
First Prize Winner Selected Kawai EX

22nd Casagrande Int'l Piano Competition  
First Prize Winner Selected Kawai EX



## 2004 Sydney International Piano Competition

First Prize Winner John Chen  
selected the EX Concert Piano



## 2004 Jose Iturbi International Piano Competition

First Prize Winner Alexandre Moutouzkine  
selected the EX Concert Piano

# KAWAI

The World's Most Advanced Piano

Kawai America Corporation • Rancho Dominguez, CA 90220 • [www.kawaius.com](http://www.kawaius.com)

## Technology Hubs

**10:45-1:00 and 3:30-5:30, Thursday and Friday**

Sign up at the Registration Desk for participation in the Hubs.

Each Hub presentation will last 45 minutes and will be followed by a technology "open house" until the closing time listed.

**George F. Litterst (Cermak)**

### 10:45 Using Technology to Learn and Perform Piano Concerti

Experience the virtual orchestra, an orchestra that is willing to play with you at any time of the day or night and which follows your tempo and responds to your dynamics.



### 3:30 Multimedia in Concert Performance

Modern tools make it easy to add visual elements to a performance and thus engage the imagination of an audience. Students can also use these tools and deepen their musical understanding by assembling the elements of their multimedia presentation. Join us as we examine both the aesthetic and technical issues.

**George F. Litterst** is a nationally-known music educator, clinician, author, performer, and music software developer. He works extensively with the Disklavier™ piano and is co-author of the intelligent accompaniment software program, *Home Concert Xtreme*, and the electronic music blackboard, *Classroom Maestro*.

**Kathy Maskell (Ogden)**

### 10:45 Good Things Come in Three's: Technology Support for Small Group Teaching

This session will focus on a three-student semi-private teaching environment and the technology used to support students' individual needs.



### 3:30 Creative Keyboard Camp: How to Spend a Summer Vacation

Keeping students motivated during the summer months is our topic of discussion here. Organization of skill sets with a lot of imagination thrown in can make a truly successful program an energy boost for everyone.

**Kathy Maskell**, NCTM, is the founding director of MusicWorks, Inc., a multi-teacher music education facility in Tewksbury, MA. Kathy also teaches class piano at Regis College in Weston, MA, and serves as organist at Old Cambridge Baptist Church, Harvard Square. Her articles relating to music technology have appeared in *Keyboard Companion* and she has presented at technology sessions for MTNA national conferences.

**Michelle Gordon (Camden)**

### 10:45 Adding Technology to Your Studio in Five Easy Steps

For the teacher who wishes to start using technology in the private lesson. Often it is difficult to decide where to begin, and this presentation will show you how to make those decisions easier.



### 3:30 Planning a Computer Lab Curriculum

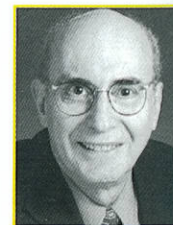
For the private piano teacher who has a computer lab in place. We will discuss how to decide what to include in a computer/MIDI lab program and how to structure students' lab time as part of an "extended lesson" format.

**Michelle Gordon**, past-president of the Massachusetts MTA, is a private piano instructor, a church musician, choral accompanist, and licensed Kindermusik educator. She has written for *Keyboard Companion* and presented Technology Symposium sessions at the MTNA national conference.

**Paul Sheftel (Windsor)**

### 10:45 Technology Potpourri

Find out what is in Paul Sheftel's studio, discover which tools he puts to most frequent use, learn how he overcomes his technology phobias, and find out how he learns to use them without spending too much time.



### 3:30 Video in the Modern Piano Studio

Digital video cameras are now affordable and easy to use. Join this session to learn how you can use video to document your students' progress, motivate your students and help them evaluate their own work.

**Paul Sheftel's** materials published by Alfred and Carl Fischer are used throughout the country. His MIDI orchestrations include the complete Bastien Piano Method and Carl Fischer's *Music Pathways*. Currently he teaches pedagogy at The Juilliard School as well as maintaining a private studio in New York City.

#### NCKP Committee on Technology

George Litterst, Chair

Michelle Gordon

Kathy Maskell

Paul Sheftel

# Research Poster Presentations

11:30-1:00 and 4:15-5:15, Thursday and Friday

Regency Foyer

## The Application of Music Learning Theory Concepts to a Notation-Based Piano Method

*Meisha Adderley, Charleston (SC) County School District  
Cedric Adderley, Claflin University*

This study was conducted to test the validity of Edwin Gordon's music learning theory and its applications to piano instruction. The purpose of this research was to design the treatment for a projected pilot and formal study that may be used in future empirical research to examine the effects of note-reading and music learning theory based curriculums on the audition and keyboard performance skills of six to eight year olds.

**Meisha Adderley** is Music Specialist for the Charleston (SC) County School District. Prior to this position she served as a Rotary Ambassadorial Scholar at the University of Sydney's Conservatorium of Music in Australia and directed the Community Music Center at Indiana State University. **Cedric Adderley** is Associate Professor and Chair of the Department of Music at Claflin University in Orangeburg, SC. He enjoys a multi-faceted career as composer, arranger, and clinician, and maintains an active schedule of guest conducting throughout the region.

## Common Injuries to Soft-Tissues in Keyboard Prevention Techniques, and the Role of the Piano Teacher in Prevention

*Suzanne L. Burg, The Ohio State University*

It is imperative that the private piano teacher know something about anatomy, physiology, and biomechanics of the hands, arms, and upper torso and be able to recognize potentially harmful postures and playing techniques that could injure students. Knowing basic first aid for injury treatment for a student and when to recommend medical treatment is important. A goal of this presentation is teaching private studio teachers the basic tenets of injury prevention so that they, in turn, might teach students injury prevention.

**Suzanne Burg**, a 1975 graduate of the University of Cincinnati College-Conservatory of Music, graduated *cum laude* in 2005 from The Ohio State University with an MA in piano pedagogy. She resides in Zanesville, OH.

## Cooperative Learning in the Piano Classroom: Working Together to Learn

*Alejandro Cremaschi, University of Colorado at Boulder  
Justin Badgerow, University of Colorado at Boulder  
Jennifer Bratz, University of Colorado at Boulder*

Cooperative Learning is an approach whereby students rely on each other to learn. During this poster presentation we will show examples of how to use Cooperative Learning techniques in the piano classroom, and will explain their benefits.

**Alejandro Cremaschi** teaches piano, class piano, and pedagogy at the University of Colorado at Boulder. A group piano and technology specialist, he has developed original teaching software, published a computer-aided group piano textbook, and presented in national and international conferences.

**Justin Badgerow** is a doctoral student in piano at the University of Colorado at Boulder. He holds degrees from the University of Texas at Austin and the University of Central Florida in Orlando. In the fall he will join the faculty at Sul Ross State University in Alpine, TX.

**Jennifer Bratz** is currently a doctoral student at the University of Colorado in piano performance. She completed her undergraduate and masters degrees as well as a performer's diploma at Indiana University. She has taught class piano and private piano instruction at the University of Colorado, Indiana University, and Western Washington University.

## An Investigation of Numerical Levels Assigned to Piano Literature

*Ann Bader, IMT, Frazer, PA*

Numerical Levels Assigned to Piano Literature investigates consensus and comparison of multiple sources assigning levels to literature. Pieces which could serve as reference points for numerical levels are suggested.

**Ann Bader** is the creator of *treasuresofpiano.com*, designed to aid teachers in the selection of repertoire and materials. She recently received a grant to study levels assigned to piano repertoire.

*continued on pages 28-29*

## Posters *continued from page 27*

### **The Effect of Altering Environmental Context on the Performance of Memorized Music**

*William W. Backlin, North Iowa Area Community College*

*Jennifer Mishra, University of Northern Iowa*

Four experiments were undertaken to determine whether music memory was context-dependent. Experiments 1 and 2 performed their investigations on room-as-context. Experiments 3 and 4 conducted their investigations on piano-as-context, rather than room-as-context.

**William W. Backlin** is Professor of Piano Studies, Music Theory and Music History at the North Iowa Area Community College in Mason City, IA. He is the author of articles published in the *Iowa Music Educators Association*. He is the 2005 winner of the Choral Composition Competition commissioned by the Iowa Choral Directors Association and the Iowa Composers Forum.

**Jennifer Mishra** is Assistant Professor of Graduate Music Education at the University of Northern Iowa. She is the author of articles published in *Psychomusicology*, *UPDATE*, *Perspectives in Music Education*, *Contributions to Music Education*, and *Bulletin of the Council for Research in Music Education*.

### **Is a Drop in Executive Functioning Necessary for Smooth Piano Performance? Some Evidence from Cognitive Neuroscience**

*Marcie Zinn, Zinn Piano Academy, Pleasanton, CA*

*Mark Zinn, ArtsNova Consulting Group, Pleasanton, CA*

*Robert Schleser, Illinois Institute of Technology*

EEG research with 34 piano students elucidates brain activation commensurate with the activity, with a split in the data by developmental level. This data has implications both for teaching and performance.

**Marcie Zinn**, Ph.D., NCTM, specializes in Performing Arts Psychopathology and cognitive-developmental issues in the arts. She manages lab schools for children in the arts to test psychophysiological-based teaching methods.

**Mark Zinn**, MM, PC, NCTM, researches neurocognitive-developmental issues in the arts for children and adults. He also develops hardware and software solutions for his and Marcie's lab school's internet-based music study.

**Robert Schleser** is Professor of Psychology at IIT in Chicago, specializing in child psychopathology and sport psychology. As consultant for the Chicago Public Schools, he investigates cognitive development and the minority achievement gap.

### **Metapedagogy: Reflections on the Interrelational Art of Piano Teaching**

*Brandi Jacques, University of Toronto*

What is the "special something" that makes certain piano teachers inspiring, engaging, and empowering? Can this ability be taught and learned? This research examines the "extramusical" skills of expert piano teachers.

**Brandi Jacques** is an artist-teacher from Toronto, Canada. She holds degrees in piano performance and music education and has been teaching for 20 years. She is completing her Ph.D. in Music Education at the University of Toronto.

### **Multimodal Feedback Technology for Improving Piano Performance and Technique**

*Kathleen Riley, New York University*

This research evaluates the effectiveness of different kinds of multi-modal biofeedback in enhancing the transfer of learning necessary to achieve the refinement of fine motor control programs that must be intimately linked with detailed and effective aural analysis skills in piano performance.

**Kathleen Riley**, Ph.D., is an adjunct professor at New York University. She has private practices in New York City and New Jersey. She is also a Yamaha artist and research consultant for Yamaha Corporation of America.

### **Review of Empirical Studies on Techniques Dealing with Musical Performance Anxiety**

*Joann Marie Kirchner, Temple University*

This research poster will present a summary of findings of empirical studies which have examined the effectiveness of various techniques in dealing with musical performance anxiety. A bibliography will be provided.

**Joann Marie Kirchner** is the Coordinator of Secondary Piano at Temple University. A frequent clinician and adjudicator, Dr. Kirchner also serves as the Artistic Director for the Lancaster Conservatory of Music.

### **A Survey on Current Modes of Instruction in Class Piano in the United States**

*Huei Li Chin, Southern Illinois University Edwardsville*

This study explores the types of teacher-student interactions and peer interactions class piano students experience in the group setting.

**Huei Li Chin** is an Assistant Professor of Music and the Director of the Keyboard Development Program at Southern Illinois University Edwardsville. She holds a BM and MM in Piano Performance from West Virginia University and a Ph.D. in Music Education from The Ohio State University.

**Using the Dunn and Dunn Learning Styles  
Perceptual Modalities to Enhance Memory of  
Music in the Private Teaching Studio**

**Teresa Dybvig, Director, The Balanced Pianist,  
Setauket, NY**  
**Sarah Church, St. John's University**

This poster presents kinesthetic, visual, auditory, and tactile perceptual modalities, cues for recognizing which modalities students prefer, and ways to help students strengthen memory through integrating their less preferred modalities.

**Teresa Dybvig, DMA piano Yale, BM and MM piano  
Indiana University, Director of The Balanced Pianist  
(www.BalancedPianist.com), teaches piano privately in  
Long Island, Manhattan, Chicago, St. Paul, and LaCrosse.**

**Using 4D Motion Capture Technology to  
Describe and Assess Piano Technique:  
A Case Study**

**Brenda Wristen, University of Nebraska-Lincoln**  
**Nicolas Stergion, University of Nebraska-Omaha**  
**Sharon Evans, University of Nebraska-Lincoln**

The purpose of this study was to determine whether or not there were differences in the quality of motions employed by pianists when sight-reading versus performing practiced repertoire, and whether any such differences could be observed and described using motion capture technology across four dimensions.

**Brenda Wristen, Ph.D.,** directs the piano pedagogy and keyboard skills programs at the University of Nebraska-Lincoln. She is an active researcher, clinician, and performer, and chairs the Wellness Committee for the National Conference on Keyboard Pedagogy.

**Nick Stergion** directs the HPER Biomechanics Laboratory in the College of Education at the University of Nebraska at Omaha.

**Sharon Evans** is Associate Professor of Educational Psychology at the University of Nebraska-Lincoln and is also affiliated with the Chapin Gait and Motion Laboratory in the Institute for Rehabilitation Science and Engineering at Madonna Rehabilitation Hospital in Lincoln, NE.

**A Survey of Faculty and Student Perceptions of  
Common Challenges for Young Piano Teachers**

**Lori Rhoden, Ball State University**

Faculty in piano pedagogy programs each year seek to prepare students with the necessary tools to become successful piano teachers. An online anonymous survey was conducted to determine the perceived common challenges for new or young piano teachers. Results indicated that the skills or tasks considered to be the most difficult were motivating students to practice, covering all planned material in the lesson, and teaching improvisation, composition, and ear training.

**Lori Rhoden, Associate Professor of Piano and Coordinator of Piano Pedagogy/Group Piano at Ball State University, holds degrees from the University of South Carolina, Southern Baptist Theological Seminary, and Florida State University. She is President of IMTA.**

**A Theoretical Model of Piano Sightplaying  
Components**

**Dnya B. Udtatsuk, University of Missouri-Columbia**

A theoretical model of piano sightplaying is a model explaining four major components contributed to an individual's sightplaying ability. The four components are CAPE: physical coordination, musical awareness, musical potential, and musical experiences. **Dnya Udtatsuk** received her Masters and Ph.D. degrees in Music Education from University of Missouri-Columbia. Her research interests are music reading and piano pedagogy. She is currently an instructor in the Department of Music, University of Missouri-Columbia.

**The Use of Imagery, Mental Practice, and  
Relaxation Techniques for Musical  
Performance Enhancement**

**Lesley Ann Sisterhen, University of Oklahoma**

This exploratory study involved five graduate pianists from the University of Oklahoma who engaged in mental practice, imagery, and relaxation techniques for four weeks. The participants were trained in progressive relaxation and imagery and performed one piece weekly. A trend toward lower post-test scores on two anxiety inventories showed a reduction in performance anxiety. The participants' self-evaluations of their videotaped performances revealed higher mean ratings each week in the areas of accuracy, confidence, memory, concentration, and overall performance.

**Lesley Sisterhen** is currently a piano instructor at the University of Central Oklahoma and will begin teaching piano pedagogy at Baylor University in the fall. She recently received her DMA in Piano Performance and Pedagogy from the University of Oklahoma.

# Conference Exhibitors

The National Conference on Keyboard Pedagogy acknowledges the support and cooperation of the following members of the music industry.

## Exhibits will be open:

Thursday and Friday: 10:15 - 2:00 and 3:00 - 7:30

Saturday: 10:15 - 6:00

## A tempo Software

Administrative software (Mac/Windows) for individual music teachers or studios. Keeps records of students, teachers, performances, finances, etc. Several editions to fit any size studio. (Booth #22)



**Alfred Publishing Co., Inc.** (Including Myklas Music Press and Warner Bros. Publications)

Alfred Publishing Co., the world leader in music education products since 1922, is known for its quality piano methods, supplemental music, masterwork editions and studio resources. With the recent acquisition of Myklas Music Press and Warner Bros. Publications, Alfred continues its commitment of offering a premier keyboard catalog. (Booths #4, #5, #6)

The Best of Both Worlds.



## eMedia Music

eMedia Music is the world's leading publisher of music instruction software, with products acclaimed by sources such as *Newsweek* and *American Music Teacher* magazine. (Booth #19)



## E-Z Notes

E-Z Notes develops and distributes music learning tools for private studios, classrooms, home schools and pedagogy programs. Log on to [www.e-znotes.com](http://www.e-znotes.com) for a complete description of more than thirty products. (Booth #21)

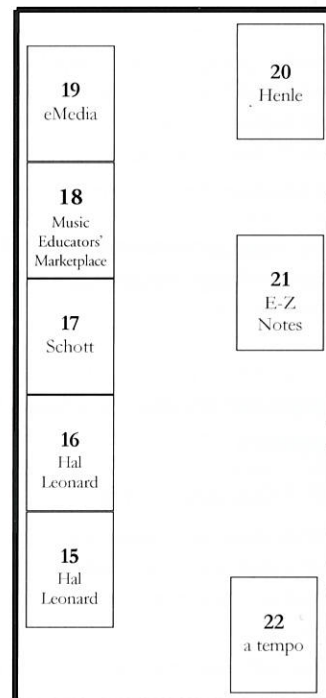


## The FJH Music Company, Inc.

The FJH Music Company offers today's piano teacher the best in educational music, with exciting, pedagogically sound publications, featuring Nancy and Randall Faber's *Piano Adventures*™ and the PreTime® to BigTime® libraries. We are proud to publish three series compiled, edited, and written by Dr. Helen Marlais: the historical repertoire of *Succeeding with the Masters*™, the inspirational collection of *In Recital - Throughout the Year*™ (with *Performance Strategies*), and the beneficial *Sight Reading and Rhythm*™ books. (Booths #1, #2, #3)



## Exhibits will be in the Regency Foyer, Kent Room, and Essex Ballroom



## Kent Room

Hubs, Posters Exhibits

## Frances Clark Center for Keyboard Pedagogy



The Frances Clark Center for Keyboard Pedagogy was established in 1999. The Center includes The New School for Music Study, a community music school and teacher training center in Princeton, NJ; *Keyboard Companion* magazine; and The National Conference on Keyboard Pedagogy. (Booth in the Regency Foyer)

## Frederick Harris Music

For over one hundred years, Frederick Harris Music has published educational print music materials of exceptional quality designed to suit the specific needs of studio teachers and their students. Publications include *Celebration Series*®, *The Piano Odyssey*®, *Celebrate Piano!*®, and *Four Star Sight Reading and Ear Tests*. (Booths #10, #11, #12)



## Hal Leonard Corporation



World's largest publisher of printed music, featuring the Hal Leonard Student Piano Library and Adult Piano Method, Schirmer Performance Editions, and The Phillip Keveren Series. (Booths #15, #16)



**Musikgarten**  
Teaching music, understanding children! Musikgarten provides training and materials for teaching music and movement from birth through group piano: workshops, curricula, recordings and instruments. (Booth #0)

**The NCRP Shop**  
The NCRP Shop offers CDs, books, and educational music items from the NCRP presenters and The Frances Clark Center for Keyboard Pedagogy. Get your limited edition NCRP polo shirt here! (Booth in the Regency Foyer)

**PianoAtPepper.com, a service of J.W. Pepper**  
PianoAtPepper.com is the nation's premier supplier of piano music with over 100,000 titles by all music publishers. Free shipping when you order online at PianoAtPepper.com. (Booth #9)



**Royal American Conservatory Examinations**  
Royal American Conservatory Examinations provides American students with nationwide opportunities for achievement and evaluation. Based on the curriculum of the renowned Royal Conservatory of Music, RACE serves families with a national standard for the developing musician. (Booth #8)



**Schaum Publications, Inc.**  
Schaum Publications, a family owned business, publishes quality piano materials integrating music appreciation, theory, sight reading and technique into a comprehensive education for tomorrow's musicians. (Booth #14)



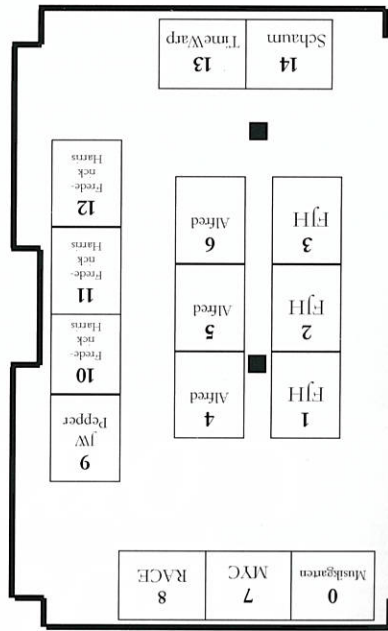
**Schott**  
Schott, the largest music publisher in Germany, publishes several important piano series: Schott Piano Classics, a library of standard classical repertoire in affordable editions, *Get to Know Classical Masterpieces*, beautifully illustrated, famous musical stories such as *Scheherazade*, *Carmen*, etc., among others. (Booth #17)



**TimeWarp Technologies**  
TimeWarp Technologies publishes the exciting, score-following software *Home Concert Xtreme*. *Home Concert* is compatible with thousands of MIDI files from major music publishers. TimeWarp also publishes *Classroom Maestro*, a computer-based, electronic blackboard for class keyboard instruction. (Booth #13)



**Essex Ballroom**



**G. Henle USA, Inc. and I.G. Henle Editions**  
Henle is synonymous with the highest standards of music publishing. Since its founding in 1948, Henle *Urtext Editions* have rapidly established themselves as a standard of quality throughout the world. Henle also publishes *Henle Musicological Editions* with complete editions of Beethoven, Brahms, Haydn; RISM Series B, with thematic catalogues; and *Edition HAS Music Publications*, motivating new material for piano teachers and their students. (Booth #20)



**Music Educators' Marketplace**  
Wide variety of enrichment materials independently created by teachers who cooperatively market. Products encompass theory, music history, software, DVD/VHS, music-related story books, group games and activities, and motivational items. (Booth #18)



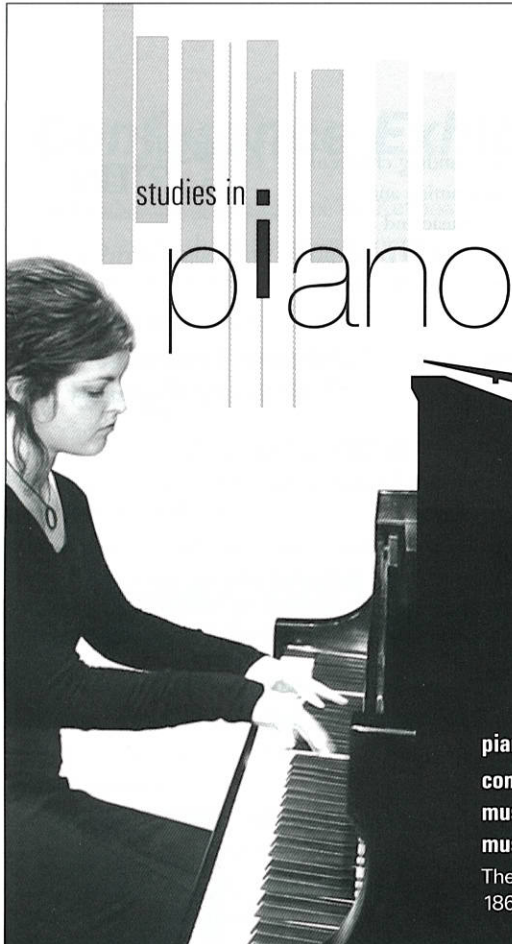
**Music for Young Children**  
Music for Young Children™ is a keyboard-based group music-program where children and parents attend lessons together and is now holding teacher-training seminars throughout North America. (Booth #7)



**Music Teachers National Association**  
Founded in 1876, Music Teachers National Association is committed to advancing the value of music study and supporting the professionalism of music teachers. (Booth in the Regency Foyer)

MUSIC TEACHERS NATIONAL ASSOCIATION





**BM, MM, DMA** *in Performance*  
**BA** *in Music*  
**BME**  
**MA** *in Piano Pedagogy*  
**PhD** *in Music Education with an emphasis  
in piano pedagogy*



[music.osu.edu](http://music.osu.edu)

**Audition Days for 2006-2007 academic year:**

Friday, January 13, 2006  
Saturday, February 18, 2006  
Monday, February 20, 2006  
Wednesday, March 15, 2006  
Friday, April 7, 2006

note: undergraduate students who audition on or before  
February 20, 2006, receive first consideration for talent scholarships.

**piano faculty:** Steven Glaser, Caroline Hong, Mellasenah Morris and Kenneth Williams  
**contact:** Kenneth Williams (email [williams.1679@osu.edu](mailto:williams.1679@osu.edu))  
**music undergraduate studies:** David Frego (email [music-ug@osu.edu](mailto:music-ug@osu.edu))  
**music graduate studies, interim:** Kenneth Williams (email [mus-grad@osu.edu](mailto:mus-grad@osu.edu))

The Ohio State University School of Music  
1866 College Rd · Columbus OH 43210 · 614.292.2870



*college of the arts*



**Keyboard Faculty**

**Piano**

Douglas Humpherys, *co-chair*  
Barry Snyder, *co-chair*  
Natalya Antonova  
Jean Barr  
Tony Caramia  
Vincent Lenti  
Rebecca Penneys  
Thomas Schumacher  
Nelita True

**Fortepiano**

Malcolm Bilson

**Organ**

David Higgs, *chair*  
Hans Davidsson  
William Porter

**Harpsichord**

William Porter

**EASTMAN SCHOOL OF MUSIC**

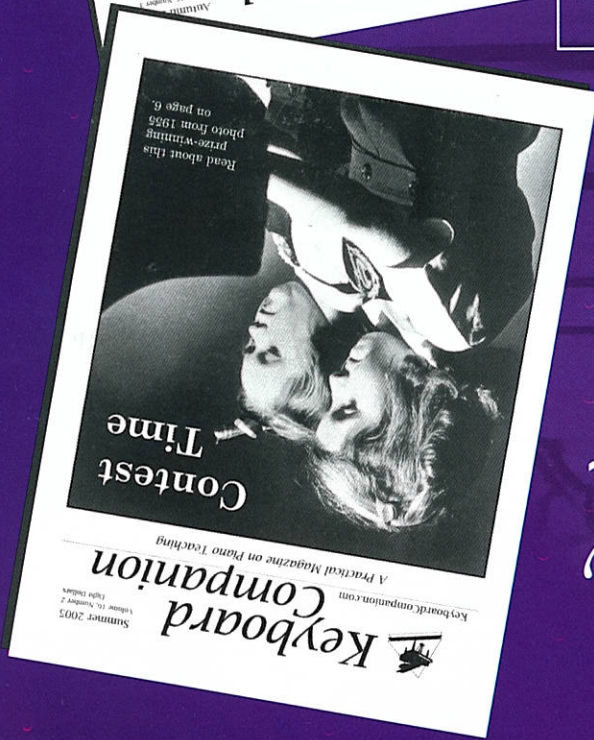
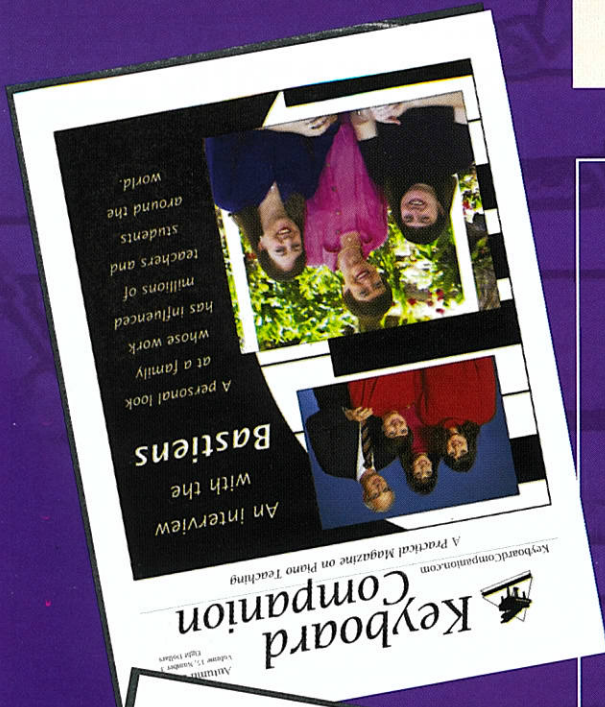
Eastman congratulates Professor of Piano  
**Nelita True** on receiving the  
National Conference of Keyboard Pedagogy  
Lifetime Achievement Award.



800 388 9695 or 585 274 1060  
[admissions@esm.rochester.edu](mailto:admissions@esm.rochester.edu)  
[www.rochester.edu/Eastman](http://www.rochester.edu/Eastman)

Application deadline December 1  
Early application deadline November 1

*KeyboardCompanion.com*



*A Practical Magazine on Piano Teaching*

# Keyboard Companion

*Visit our booth  
in the Regency Foyer  
for a free copy!*

*Each informative issue  
presents valuable articles by  
dozens of leading teachers ~  
your companions on the  
journey to success with  
every student!*

**Each issue of Keyboard Companion  
includes 11 departments:**

- Technique
  - Music Reading
  - Home Practice
  - Adult Piano Study
  - Repertoire & Performance
  - Keyboard Kids' Companion
  - News & Views
- a handout for your students with  
activities, puzzles and more!*

The University of Houston  
**Moores School of Music**

David Ashley White, *Director*



**Admission  
and  
Scholarship  
Information**  
713.743.5934

**Bachelor of Music**  
Keyboard

(piano or organ)  
Performance

**Master of Music**  
Performance & Pedagogy  
Accompanying & Chamber Music

**Doctor of Musical Arts**  
Performance  
(Keyboard, Keyboard Collaborative Arts)

**Keyboard Faculty**

Robert Bates, *organ*  
Robert Brownlee, *piano*  
Matthew Dirst, *harpisichord*  
Timothy Hester, *piano*  
Abbey Simon, *piano*  
Ruth Tomfohrde, *piano*  
Nancy Weems, *piano*

*The Rebecca and John J. Moores School of Music* comprises a remarkable faculty of internationally recognized performers, composers, and scholars; an outstanding student body; a state-of-the-art facility; and comprehensive programs – all making the Moores School a natural choice for more than 600 students annually. The School's commitment to academic excellence and highest performance standards has ensured its role as a vital resource in the educational and cultural life of Houston.



UH is an EEO/AA Institution



*Technology On Center Stage* - August 5, 8:45 a.m.

presented by

**Timothy Hester**

(in cooperation with the NCKP Committee on Technology)

An "informance" in which MIDI and reproducing technologies are actively used to enhance artistry and effectiveness in practice, performance, and pedagogy.



**Timothy Hester**, Associate Professor of Piano, teaches sight reading, collaborative keyboard techniques, and serves as Director of Keyboard Collaborative Arts. Named Outstanding Faculty member of the Year in 2003 by the Moores Society, Professor Hester is a graduate of The Julliard School and the University of Houston where he studied with Adele Marcus and Albert Hirsh, respectively. He is currently Chief Artistic Consultant for Rehearsalnet.com.

The University of Houston's Moores School of Music Keyboard Collaborative Arts Area is dedicated to the goal of infusing the importance of the art of musical collaboration throughout the world of keyboard education. By training our piano majors (both soloists and those who choose Collaborative Arts as their focus), we strive to unify the stigmatic division of solo literature and collaborative work in an effort to change the perception that a pianist either is a 'soloist' or an 'accompanist'. We prove true the necessity for an integrated keyboard education which includes collaborative skills. By offering a D.M.A. in Piano Performance *with an emphasis on Collaborative Arts*, we act upon our goal to produce graduates who go out into the field of music well-equipped to excel in solo performance, collaborative work and equally trained to teach these concepts to pupils of all levels.

Currently, the talented students enrolled in the Keyboard Collaborative Arts Area hail from Mexico, Korea, Romania, Moldavia, and the U.S. They form a tightly-knit team of pianists who crave the excitement of preparing programs with other musicians and immerse themselves into this preparation whole-heartedly. Their energy is astounding and their sense of professional commitment as blossoming artists play an equal role in their successful performances. We are proud of our students' efforts and accomplishments in their vital roles as members of the student body. With its fantastic array of instrumentalists and vocalists, the Moores School is an ideal laboratory in which our pianists hone their skills for the future.



Baldwin-Wallace Keyboard Faculty: Dr. Robert Mayerovitch, Professor Mary Dobra-Grindahl and Dr. Carla McElhaneey

# The Conservatory

*Inspired teaching... Gifted students...  
Dynamic results!*

- Meet NCKP presenter Dr. Robert Mayerovitch as he discusses "Bottling Experience."
- Dr. Mayerovitch is co-author of the critically acclaimed "A Symposium for Pianists and Teachers."
- The undergraduate Baldwin-Wallace College Conservatory of Music features a pedagogically cutting-edge, innovative and exciting team-teaching approach to piano education.

**B·W**  
**BALDWIN**  
**WALLACE**  
COLLEGE

For more information contact: Anita S. Evans, Conservatory of Music,  
Baldwin-Wallace College, 275 Eastland Road, Berea, OH 44017-2088  
Phone 440-826-2368 or toll-free at 1-866-BW-MUSIC  
[www.bw.edu/academics/conservatory/](http://www.bw.edu/academics/conservatory/)

*Baldwin-Wallace College does not discriminate on the basis of race, creed, age, disability, national origin, gender or sexual orientation in the administration of any policies or programs.*

A close-up, low-angle photograph of the hammer flippers on a piano. The flippers are arranged in a diagonal line, receding into the background. They are made of polished metal and have a distinctive shape with a curved top and a pointed bottom. The background is a warm, golden-brown color, likely the wood of the piano's interior.

# Music Teachers National Association

## A Tradition of Excellence

Since 1876, Music Teachers National Association (MTNA) has established a tradition of excellence and become the undisputed leader in empowering the music-teaching professional. MTNA is committed to advancing the value of music study and music making to society and to supporting the professionalism of independent and collegiate studio music teachers.

### MTNA's Members Enjoy:

- A vast network of 24,000 music-teaching professionals, performers and pedagogues, representing all applied areas
- National student performance and composition competitions
- Low-cost liability, health and other insurance coverages
- Professional support for zoning, tax and legal issues
- Access to informative resources and publications, such as *American Music Teacher* magazine
- Music for Everyone Programs to motivate your students and recognize their achievements
- Opportunities for continuing education through conferences, workshops and the MTNA Professional Certification Program

*Join today and become part of nearly 130 years of excellence.*

For additional membership information or to join, visit [www.mtna.org](http://www.mtna.org) or contact MTNA at (888) 512-5278 or [mtnanet@mtna.org](mailto:mtnanet@mtna.org).

# Friday: Conference Day Two

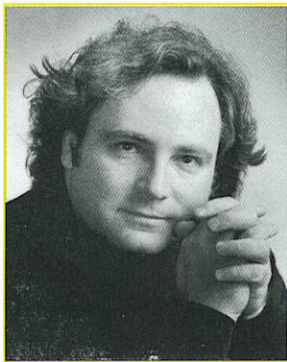
## Conference Day Two: Friday, August 5

All Plenary Sessions will be held in the Regency Ballroom

### Morning

- 8:00 **Registration** Regency Foyer (all day)
- 8:30 **Technology on Center Stage** Timothy Hester
- ✓ 9:30 **Teaching Demonstration** Boris Berman with Brandon Stewart, 2005 MTNA Collegiate Artist Winner
- 10:15 **Break**
- 10:15-2:00 **Exhibits Open** See pages 30-31. Essex, Kent, and Regency Foyer
- 10:45-1:00 **Technology Hubs** See page 26 for topics. Sign up at the Registration Desk.
- 10:45 **Workshops** (choose one)
- A.M. ✓ • **Marvin Blickenstaff** Nature's Clues to Interpretation Regency
- P.M. ✓ • **Brenda Dillon** The Recreational Pianist Oak Brook
- **Nadia Lasserson** Piano Need Not Be Lonely: Chamber Music for the Young Pianist Spring
- **Robert Mayerovitch** Bottling Experience: Rules of the Pianists' Thumbs Hunt
- 11:30 **Lunch**
- 11:30-1:00 **Research Poster Presentations** See pages 27-29 for titles and presenters. Regency Foyer
- 12:15-12:45 **Noontime Recital** by Oakton Six Piano Ensemble, Glenna Sprague, director

Lunch: Karl Bruhn



## Technology on Center Stage

### Timothy Hester

In cooperation with the NCKP Committee on Technology, Timothy Hester will present an "informance" in which MIDI and reproducing technologies are actively used to enhance artistry and effectiveness in practice, performance, and pedagogy.

**Timothy Hester** is Assistant Professor of Piano at the University of Houston Moores School of Music where he also teaches sight reading, collaborative keyboard, and serves as Director of Keyboard Collaborative Arts. Named Outstanding Faculty member of the Year in 2003 by the Moores Society, Professor Hester is a graduate of The Juilliard School and the University of Houston where he studied with Adele Marcus and Albert Hirsh, respectively. He is currently Chief Artistic Consultant for Rehearsalnet.com.

### Afternoon

- 1:00 **Industry Showcases**  
eMedia Oak Brook  
FJH Regency  
TimeWarp Technologies Spring
- ✓ 2:00 **Mini-Recital** by students from the Wheaton College Community School of the Arts
- ✓ 2:15 **Teaching Demonstration** Randall Faber with Joseph Tyler, age 22 (video)
- 3:00 **Break**
- 3:00-7:30 **Exhibits Open** See pages 30-31. Essex, Kent, and Regency Foyer
- 3:30-5:30 **Technology Hubs** See page 26 for topics. Sign up at the Registration Desk.
- ✓ 3:30 **Workshops** (choose one)  
See above for the Friday workshop offerings.
- 4:15-5:15 **Research Poster Presentations** See pages 27-29 for titles and presenters. Regency Foyer
- 4:30 **Wrap-Up Discussions** What I have learned today that will improve my teaching tomorrow. See registration packet for room assignment.

### Evening

- 5:15 **Dinner Break** *Handwritten: Randall Faber*
- ✓ 8:00 **Recital** by Conference Artist, Boris Berman
- ✓ 9:30 **Reception** Regency Foyer

## Noontime recital 12:15 - 12:45

### **Oakton Six Piano Ensemble**

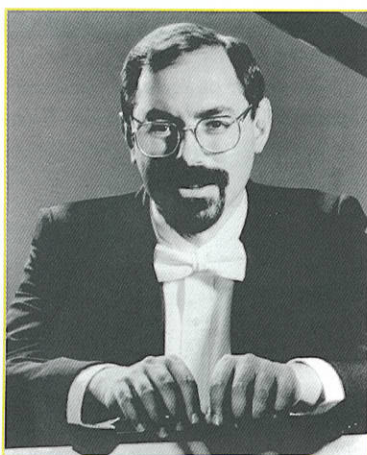
The **Oakton Six Piano Ensemble** is comprised of college students from Oakton Community College in Des Plaines, IL, and directed by Glenna Sprague (right), coordinator of the music department. The ensemble tours throughout the United States and has appeared at the MTNA national convention and at the International Conference of the College Music Society in Vienna.



**2:00 Mini-Recital by students from the Wheaton College  
Community School of the Arts**

## Evening Recital

### **Boris Berman, Conference Artist**



The piano artistry of Boris Berman is well known to the audiences of over forty countries on six continents. His highly acclaimed performances have included appearances with the Royal Concertgebouw Orchestra, The Philharmonia (London), the Toronto Symphony, Israel Philharmonic, Minnesota Orchestra, Detroit Symphony, Houston Symphony, Atlanta Symphony, St. Petersburg Philharmonic, Moscow Philharmonic, and the Royal Scottish Orchestra. A frequent performer on major recital series, he has also appeared in important festivals, such as Marlboro, Waterloo, Bergen, Ravinia, and the Israel Festival.

Born in Moscow, Boris Berman studied at the Moscow Tchaikovsky Conservatory with the distinguished pianist Lev Oborin and graduated with distinction as both pianist and harpsichordist. He is currently chairman of the Piano Department at the Yale University School of Music.

In 2004-2005, Mr. Berman appears with orchestras, as well as in festivals and recitals, in the U.S., Japan, Korea, India, Thailand, China, Israel, Italy, and Holland.

**Industry Showcases** 1:00 - 2:00

**eMedia (Oak Brook)**

**Using Instructional Piano/Keyboard Software in Teaching**

This presentation describes an innovative approach for applying interactive technology to help create happy and proficient music students. It includes a hands-on demonstration of eMedia's award-winning *Piano & Keyboard Method* CD-ROM and the intermediate level sequel.

Presenter: Vadim Ghin

**FJH (Regency)**

**Choosing Repertoire**

Repertoire is the key to challenging and motivating students with attainable goals. This session will explore three complimentary repertoire series. Dr. Helen Marlais will discuss *Succeeding with the Masters, In Recital Throughout the Year (with Performance Strategies)*, and *The FJH Contemporary Keyboard Editions*. The session will also introduce the important new repertoire supplement, *Sight Reading and Rhythm*.

Presenter: Dr. Helen Marlais

**TimeWarp Technologies (Spring)**

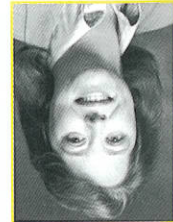
**TimeWarp Technologies: Intelligent Software for Practice and Performance of Method Materials and Piano Concerti**

*Home Concert Xtreme* is a score-following software program that works with MIDI files. *Home Concert* displays your part in music notation, follows your playing, adjusts the tempo and volume of accompaniment tracks, and even "turns your pages." *Classroom Maestro* is an electronic blackboard for class keyboard instruction.

Presenters: George F. Litterst and Shana Kirk

**Wrap-Up Discussions**  
**What I have learned today that will change my teaching tomorrow**  
 4:30 See registration packet for room assignment

**Discussion leaders**



**Cathy Albergo** is co-author of the instructional series *Celebration Piano!*, *Intermediate Repertoire Guide*, and *Celebration Series: Handbook for Teachers* (Frederick Harris). A past president of the Illinois State MTA and MTNA National Certification Chair, she is Professor of Music and has served as Chair of the Music Department at William Rainey Harper College.



**Gail Berenson** is Professor of Piano and Chair of the Keyboard Division at Ohio University, Athens. An active performer and chamber music collaborator, and a noted expert on musician wellness issues, she is co-author of *A Symposium for Pianists and Teachers: Strategies to Develop Mind and Body for Optimal Performance*. She is President-Elect of MTNA.



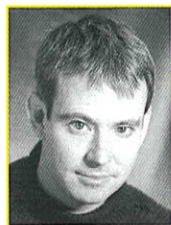
**Marcia Bosits** is Associate Professor of Piano and Director of Piano Pedagogy at Northwestern University. Recognized as a clinician throughout the U.S., Canada, and the Far East, she recently presented a lecture-recital for the European Piano Teachers Association (EPTA) in Rome.



**Carla Dean Day** is an independent teacher in Potomac Falls, VA. Formerly of the Peabody Institute faculty, she has published articles, has made both video and television appearances, and has lectured on pedagogy nationwide.



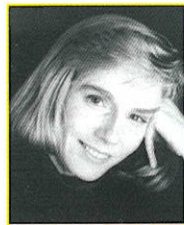
## Discussion Leaders



**Scott Donald** is Administrative Director of the New School for Music Study in Princeton, NJ. His undergraduate degree is from Furman University (SC) and his graduate degrees are from the University of Texas. He has researched the acquisition and development of motor skills in piano performance.



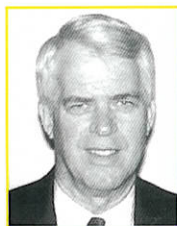
**Janet Palmberg Lyman** serves as Director of Piano Pedagogy at Indiana State University. She has presented sessions at WPPC, NCPP, MTNA, and RPMDA (the Retail Print Music Dealers Association).



**Karin Redekopp Edwards**, professor of piano at Wheaton College, performs frequently as a soloist. Collaborative performances include concerts in Japan, Korea, South Africa, Israel, Germany, Holland, England, and Wales. Her degrees are from the University of Manitoba (BMus Gold Medal) and Indiana University (MM, DM).



**Anita Boyle Renfro**, Professor of Music and Director of Keyboard Studies at Millersville University, PA, is a featured artist, clinician, and adjudicator for state and national conventions. Her recent sabbatical research focused on the life and works of the French pianist and harpist, Eugene Nollet.



**Paul Edwards** has served on the faculties of Pacific Lutheran University and Crestmont Conservatory of Music. He presently maintains a private studio in Olympia, WA.



**Sheila Schmitt** is Assistant Professor of Piano and Piano Pedagogy at Tabor College, KS. She founded and directs the Tabor College Music Preparatory School and performs as soloist and accompanist for various recitals.



**Jan Houser**, NCTM, was Missouri MTA 2003-04 *Teacher of the Year*. She is a past president of MMTA. Her degrees are from the University of Indianapolis and Ball State University with study at Ecole D'Art Americaines, Fontainebleau, France, and the University of Missouri-Columbia.



**Carmen Shaw**, NCTM, teaches students of all ages and levels in Oshkosh, WI. She is active in professional associations, performs, adjudicates, presents workshops, and directs a church choir. She has been on the faculty at UW/Oshkosh.



**Karen Ann Krieger** is an Assistant Professor of Piano and Piano Pedagogy at Vanderbilt University's Blair School of Music in Nashville, TN. She has toured extensively in the U.S. and Europe as a clinician, performer, and composer.



**Sheila Vail** earned both undergraduate and graduate degrees at the Peabody Conservatory of Music where she studied with Lillian Freundlich and Leon Fleisher. She resides in Cincinnati where she is the owner of the Indian Springs Academy of Music. She serves on the OMTA Executive Board as State Student Certificate Program Chair.



**Beverly Lapp** teaches piano, piano pedagogy, and the humanities at Goshen College where she previously chaired the music department. She is co-coordinator of the long-running Goshen College Piano Workshop, an annual summer event. She holds degrees from Goshen College and Westminster Choir College.

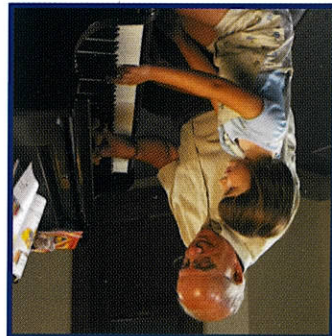
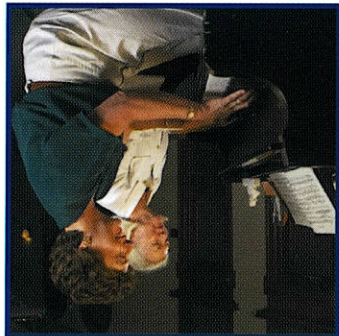
**It Takes Two:**  
Exciting Music at the Student Level for One Piano, Four Hands

**Saturday, August 6, 2005**  
1:00 — 1:45 p.m.  
Spring Room

Join PianoAtPepper.com's Editor, **Cindy Harrington**, and guest pianist **Amy Foster** for a lively session that looks at educational music for one piano, four hands from various publishers. Stay for a raffle to win a set of every piece performed!

## Visit Booth 9 and pick up your FREE "It's Time to Practice" Clock

*(while supplies last)*



*Get to know the Pepper<sup>®</sup> difference.*

**PianoAtPepper.com**  
*Where Pianists Shop for Music*

Free Shipping when you order your piano music online from PianoAtPepper.com.\*

*\*For a limited time.*

# The University of Texas at San Antonio Department of Music M.M. in Piano Pedagogy and Performance



- ▶ Full-tuition scholarships, out-of-state tuition waivers, summer stipends
- ▶ Graduate teaching and accompanying assistantships
- ▶ Training at all levels with extensive supervised teaching experiences
- ▶ New piano pedagogy resource center
- ▶ Hands-on technology training in state-of-the-art facilities
- ▶ Biennial Fall Piano Pedagogy Workshop
- ▶ Affordable city living with opportunities for independent studio teaching and community performance

## PIANO FACULTY

**Christine Debus**  
**Elizabeth Gutierrez**  
**Kasandra Keeling**  
**Sandra Ramawy**  
**Kevin Richmond**

*Dedicated to your continued  
development as musician,  
pianist and teacher*

### Contact:

Prof. Elizabeth Gutierrez  
elizabeth.gutierrez@utsa.edu  
(210) 458-5331

<http://music.utsa.edu>

# UTSA

The University of Texas at San Antonio Department of Music  
6900 North Loop 1604 West • San Antonio, TX 78249-0645

## PianoArts Biannual National Piano Concerto and Solo Competition

- June 9 – 13, 2006 in Milwaukee Wisconsin
- [www.PianoArts.org](http://www.PianoArts.org) for complete information



- A competition for pianists aged 14 – 18 with opportunities to:
- perform with professional musicians
  - participate in workshops led by world-class musicians on topics such as speaking to audiences about music
  - win prizes up to \$5,000 plus a scholarship to International Keyboard Institute & Festival, at Mannes College of Music in New York
- Sue Medford Founder, Phone: 414 962-3055x3, Email: [pawisc@earthlink.net](mailto:pawisc@earthlink.net)

©2005, PianoArts of Wisconsin

## Henle • The URTEXT Edition ...

<http://www.henleusa.com>

# gh

## Edition HAS

Music Publishing Company  
[www.editionhas.com](http://www.editionhas.com)

G. Henle USA, Inc. • PO Box 460127 • St. Louis, MO 63146  
Phone: (314) 514-1791 • FAX (314) 514-1269  
Email: [info@henleusa.com](mailto:info@henleusa.com)

# Introducing the Ultimate Performance Instrument



## History

Mason & Hamlin celebrates its 150th anniversary with the release of the CC-94, the first American-made concert grand piano introduced in over half a century.

## Craftsmanship

Limited production allows Mason & Hamlin's craftsmen to focus on the highest level of quality in each instrument they make.

## Inspiration

The CC-94 inspires with extreme colors, shadings and textures, as it allows every musical idea to be realized.

## Presence

At 9 ft. 4 in., the CC-94 is an imposing instrument — with all the power of an entire orchestra — and yet capable of following the most sensitive interpreter.



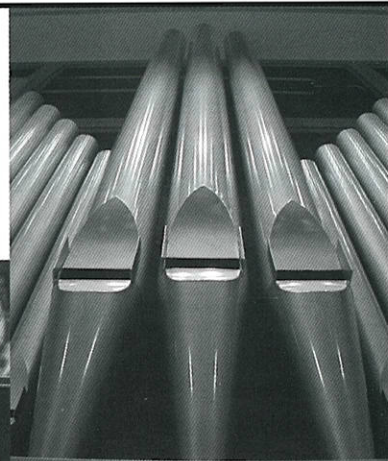
35 Duncan St.  
Haverhill, MA, 01830 USA

(800) 566-3472  
www.MasonHamlin.com

# WHEATON CONSERVATORY of Music

Experience exceptional music training from our highly respected faculty. Experience great musical moments with our 70-member symphony orchestra and other ensembles. Experience the world of music through our international study programs. Experience the arts in nearby Chicago. Experience authentic Christian community. Experience the beginning of a great music career.

Music  
CAREERS  
begin here.



Wheaton College

*For Christ and His Kingdom*

501 College Avenue  
Wheaton, Illinois 60187  
630-752-5005  
800-222-2419, ext. 2  
music@wheaton.edu  
www.wheaton.edu/music

Wichita State University

## School of Music

### Sylvia Coats

Professor of Piano Pedagogy

Author of *Thinking as You Play - Teaching Piano in Individual and Group Lessons*, published by Indiana University Press.

#### Additional Keyboard Faculty

Paul Reed, area director and piano  
Julie Bees, piano  
Judith Fear, piano  
Andrew Trechak, piano



#### Master and Bachelor degrees in:

Performance    Music Education  
Pedagogy        Accompanying

#### For More Information:

Phone: 316-978-3101  
Email: musicinfo@wichita.edu  
Web: <http://finearts.wichita.edu>



BGSU

College of Musical Arts  
announces

Scholarships and Graduate  
Assistantships in Piano



**Master of Music**  
with specializations in  
Performance, Pedagogy  
and Collaborative Piano

**Bachelor of Music**  
with specializations in  
Performance, Pedagogy  
and Accompanying

College of Musical Arts  
Bowling Green State University  
Bowling Green, Ohio 43403-0290

Ph: (419) 372-2181  
Fx: (419) 372-2938

## Piano at Bowling Green

#### BGSU Piano Faculty

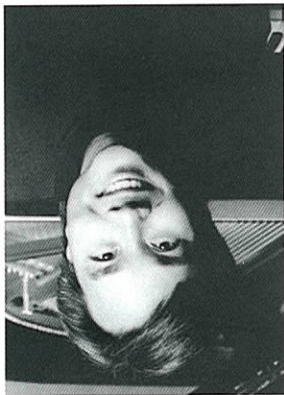
- > Dr. Cynthia Benson  
Coordinator of  
Group Piano
- > Virginia Marks  
Distinguished  
Teaching Professor
- > Dr. Laura Melton  
Coordinator of  
Keyboard Studies
- > Maxim Mogilevsky
- > Dr. Robert Satterlee
- > Russell Schmidt

Graduate and  
Undergraduate  
Admission Information  
[www.bgsu.edu/colleges/  
music/](http://www.bgsu.edu/colleges/music/)

BGSU is an AA/EEO Institution

Auditions on the Evanston campus and in 16 cities nationwide  
 Office of Music Admission and Financial Aid · Northwestern University School of Music  
 711 Egin Road · Evanston, Illinois 60208-1200 · 847/491-3141 (phone) · 847/467-7440 (fax) · musiclife@northwestern.edu  
 Northwestern University is an equal opportunity, affirmative action educator and employer.

**music.northwestern.edu**



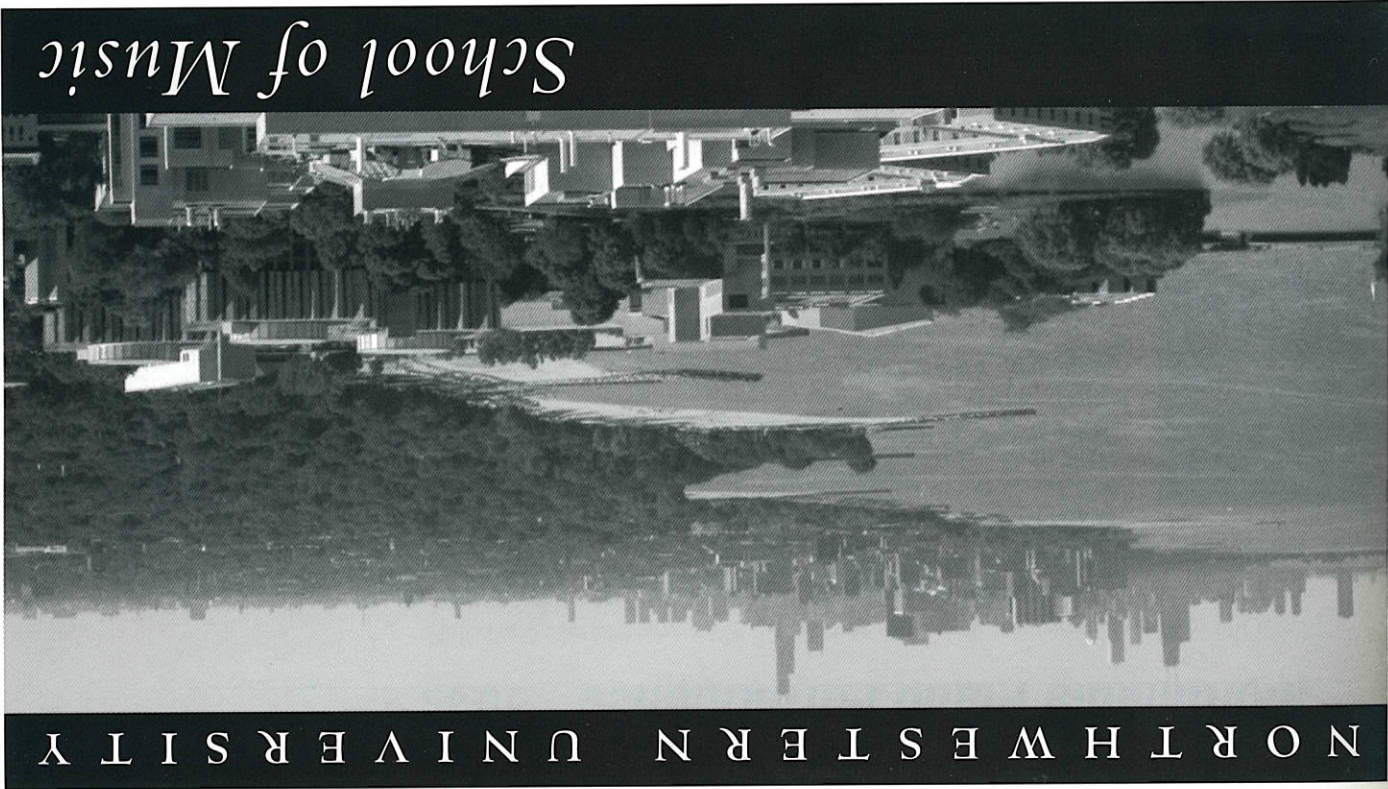
*Alan Chow performs on Saturday, August 6, as a featured artist of the 2005 National Conference on Keyboard Pedagogy.*

- Julian Dawson
- Alan Chow
- Sylvia Wang
- Elizabeth Buccheri
- Ursula Oppens
- James Giles
- Marcia Bosits

**Piano Faculty**

- Nationally ranked conservatory-level program within a major research university
- Wide range of flexible undergraduate and graduate programs
- Stellar faculty (including members of the Chicago Symphony Orchestra)
- Located close to the cultural life of downtown Chicago

NORTHWESTERN UNIVERSITY



© 2003 Evanston Photographic Studios

# Saturday: Conference Day Three

## Conference Day Three: Saturday, August 6

All Plenary Sessions will be held in the Regency Ballroom

### Morning

- 8:00 **Registration** Regency Foyer (all day)
- ✓ 8:45 **Piano Legacies** The Legendary Olga Samaroff  
Debra Brubaker Burns
- ✓ 9:30 **Teaching Demonstration** Elvina Pearce with  
Melissa Lai, age 12
- 10:15 **Break**
- 10:15-6:00 **Exhibits Open** See pages 30-31. Essex, Kent,  
and Regency Foyer
- ✓ 10:45 **Multimedia Piano Recital** Shana Kirk and  
George Litterst
- 11:30 **Lunch**
- ✓ 12:00-12:45 **Noontime Recital** by Angela Cheng, Alan  
Chow, and Alvin Chow

12:45 lunch with Scott

### Afternoon

- 1:00 **Industry Showcases**  
Frederick Harris Regency  
Hal Leonard Oak Brook  
JWPepper Spring
- ✓ 2:00 **Mini-Recital** performed by students from the  
Preparatory and Community Piano Program of  
Concordia University/River Forest
- ✓ 2:15 **Teaching Demonstration** Ted Cooper with a  
group of beginners (video)
- 3:00 **Break**
- ✓ 3:30 Presentation of **Lifetime Achievement Award**  
to Nelita True
- ✓ 4:30 **Reception** Honoring Nelita True
- 5:30 Conference Ends

Saturday



## Pedagogical Legacies

### The Legacy of Olga Samaroff Stokowski

One of the most influential American musicians in the first half of the 20th century, artist-teacher Olga Samaroff Stokowski (1882-1948) nurtured the musical expression and discipline of many pianists at the Philadelphia Conservatory and The Juilliard School of Music from 1924 to 1948.

**Debra Brubaker Burns** (right) researches historical topics in piano pedagogy, giving particular attention to societal and technological changes that have influenced music-teaching methods. She is currently writing a book on the 200-year history of American piano methods.

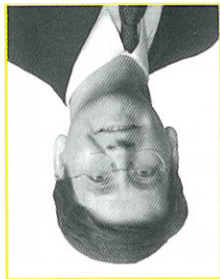


## Teaching Demonstration



### 9:30 Elvina Pearce with Melissa Lai, age 12

**Elvina Pearce** studied piano with Isabelle Vengerova and pedagogy with Frances Clark. She has presented recitals, workshops and master classes in over 40 states as well as in Canada, the Republic of China, and Australia. A nationally recognized composer, she was a founder of the *Frances Clark Center for Keyboard Pedagogy*, and serves as Editor-in-Chief for *Keyboard Companion*.



**2:15 Ted Cooper with a group of beginners (video)**  
 Ted Cooper teaches at the Levine School of Music in Washington, DC and composes educational music. He is a recipient of the National Piano Teaching Award presented jointly by MTNA and the National 2004 MTNA national convention and at the 2001 NCP.

## Teaching Demonstration

**2:00 Mini-Recital performed by students from the Preparatory and Community Piano Program of Concordia University/River Forest**

Alvin Chow has been soloist with the National Symphony, Civic Orchestra of Chicago, Pan-Asia Symphony in Hong Kong, and the Mozartcum Orchestra in Salzburg. He has studied with Nelita True, Sascha Gorodnitzki, and Menahem Pressler, and is currently on the artist faculty of the Oberlin Conservatory of Music.

Alvin Chow, Alan Chow, and Angela Cheng



Alan Chow, the winner of several international competitions, has performed in more than forty states and throughout Asia. On the faculty at Northwestern University, he has studied with Nelita True, Sascha Gorodnitzki, and Menahem Pressler.

This rare collaboration of Alvin and Alan Chow and Angela Cheng is offered in tribute to friend, mentor, and former teacher, Nelita True.

Angela Cheng has been soloist with the symphonies of Montreal, Toronto, St. Louis, and Houston. She won a Gold Medal at the Arthur Rubinstein International Piano Masters Competition, and First Prize at the Montreal International Piano Competition. She has studied with Menahem Pressler at Indiana University, and is currently on the artist faculty of the Oberlin Conservatory of Music.

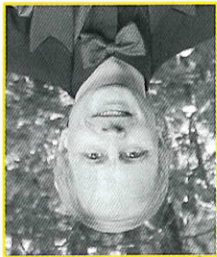
**Angela Cheng, Alan Chow, and Alvin Chow**

**Noontime recital 12:00 - 12:45**



Shana Kirk is a music technology consultant and independent piano teacher in Denver, CO. She has written technology articles and media reviews for publications including *AMT* and *Keyboard Companion*, and enjoys looking for new ways to combine technology with teaching and performance.

George Litterst is a nationally-known music educator, clinician, author, performer, and music software developer. He works extensively with the Disklavier™ piano and is co-author of the intelligent accompaniment software program, *Home Concert Xtreme* and the electronic music blackboard *Home Concert Maestro*.



In this mini recital, pianists Shana Kirk and George F. Litterst will take you boldly where few audiences have gone before. Their performance will make inventive use of embedded keyboard technologies, the computer, and coordinated multimedia displays.

**Multimedia Piano Performance 10:45**



**Exhibits:**  
see pages 30-31

## Industry Showcases 1:00 - 2:00

### **Frederick Harris (Regency)** **Exploring Celebrate Piano!®**

Join the authors of *Celebrate Piano!®* as they share insight into the pedagogical foundation of this innovative piano course. Learn how the comprehensive approach integrates five key areas of study: technique, musicianship, rhythm, ear skills, and creativity.

Presenters: Cathy Albergo, J. Mitzi Kolar, and Mark Mrozinski

### **Hal Leonard (Oak Brook)** **The Hal Leonard Adult Piano Method: Great Music = Successful Students**

Adults want to play rewarding music and enjoy their piano study. They deserve a method that lives up to those expectations. The new Hal Leonard *Adult Piano Method* does just that and more.

Presenter: Barbara Kreader

### **JWPepper (Spring)** **It Takes Two: Exciting Music at the Student Level for One Piano, Four Hands**

Join PianoAtPepper.com's Editor, Cindy Harrington, and guest pianist Amy Foster for a lively session that looks at educational music for one piano, four hands by a variety of publishers. Every attendee will receive a free gift bag. Stay for a raffle to win a set of every piece performed.

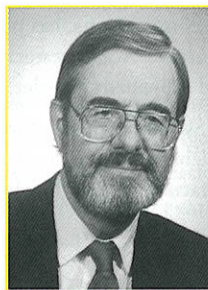
Presenters: Cindy Harrington and Amy Foster

## Lifetime Achievement Award

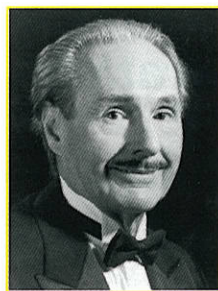
### Nelita True

The 2005 National Conference on Keyboard Pedagogy honors Dr. Nelita True for her incomparable service to our profession. Thousands of piano teachers and students in the USA and around the world have been profoundly impacted by her teaching, her workshop presentations, and her artistry. This closing session of our conference presents Nelita True with the *NCKP Lifetime Achievement Award*, celebrates her gifts to our profession, and expresses our gratitude for the many ways in which she has influenced our lives as piano teachers.

## Speakers



**Wesley True** of Bozeman, MT, earned his degrees from the University of Michigan. He has taught at the University of Michigan, Furman University, the National Music Camp, and Central Missouri State University. Dr. True has performed frequently as a soloist, collaborative artist, and as a two piano and duet partner with his wife, Marilyn. His off campus performances include lecture/recitals in Sweden, Canada, Iceland, and Taiwan.

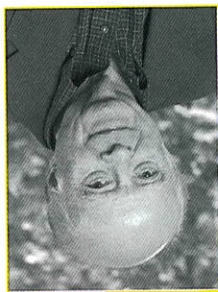


**Thomas Schumacher** has been on the faculty of the Eastman School of Music since 1995 and previously served as chair of the piano department at the University of Maryland. He has been soloist with major orchestras including the New York Philharmonic (1967 world premiere of David Diamond's Piano Concerto), Toronto Symphony, Tokyo Philharmonic, Warsaw Philharmonic, Los Angeles Philharmonic, and National Symphony.



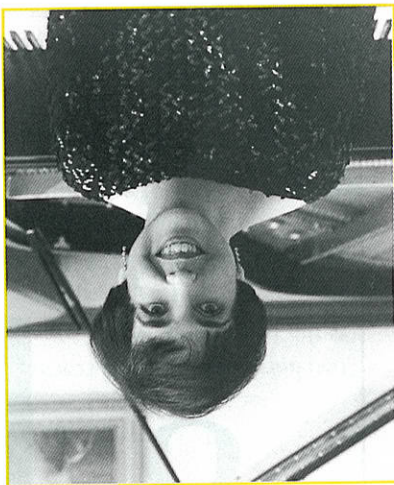
**Alvin Chow** has been soloist with the National Symphony, Civic Orchestra of Chicago, Pan-Asia Symphony in Hong Kong, and the Mozarteum Orchestra in Salzburg. He has studied with Nelita True, Sascha Gorodnitzki, and Menahem Pressler, and is currently on the artist faculty of the Oberlin Conservatory of Music.

**Fernando Laires** has toured on five continents. At age nineteen, he was awarded the Beethoven Medal in London by the Harriet Cohen International Music Awards for his cycle of the 32 sonatas of Beethoven. He has recently retired from his position as Professor of Piano at the Eastman School of Music, and he serves as Guest Professor at the Shenyang Conservatory in China.



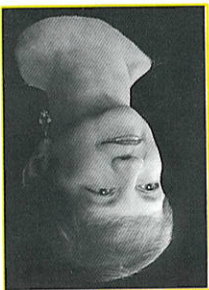
**Nelita True** made her debut at age seventeen with the Chicago Symphony Orchestra and her New York debut in Avery Fisher Hall with the Juilliard Orchestra. Her career has taken her to the major cities of Western and Eastern Europe, Indonesia, Korea, Japan, Mexico, Iceland, New Zealand, Brazil, Australia, Canada, Singapore, and Hong Kong, as well as to virtually every state in America. She has been a visiting professor at the St. Petersburg Conservatory in Russia, performing and conducting master classes, and has been in the People's Republic of China twelve times for recitals and master classes.

She has judged numerous competitions, including the China International (Beijing), Queen Sonja (Oslo), Kapell and Bachauer (USA),

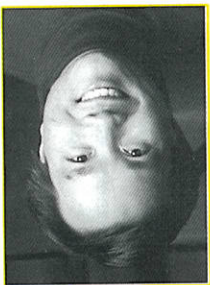


Concours de Musique (Canada), PTNA (Tokyo), Horowitz (Kiev), and Lev Vlassenko (Australia). Many of her students have won top prizes at national and international competitions, including an unprecedented five first prizes in MTNA national competitions. Her former students are pursuing careers in performance and as teachers at major conservatories and universities in the United States and abroad. Dr. True is currently Professor of Piano at the Eastman School of Music in Rochester, NY.

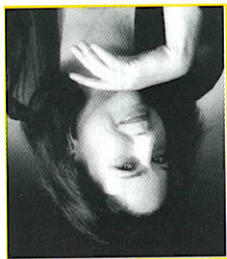
**Jean Barr** is Professor of Piano Accompanying and Chamber Music at the Eastman School of Music. In 1994, the Eastman School of Music honored her with the Eisenhart Award for Excellence in Teaching, and in 2004 she received the Susan B. Anthony Lifetime Achievement Award from the University of Rochester.



**Alan Chow**, the winner of several international competitions, has performed in more than forty states and throughout Asia. On the faculty at Northwestern University, he has studied with Nelita True, Sascha Gorodnitzki, and Menahem Pressler.



**Carolyn True** has been on the faculty of Trinity University (TX) for fifteen years. Her studies included work with Nelita True, Thomas Schumacher, Eric Heidsieck, and Wesley True. She is an active solo and chamber performer and a member of SOLI Chamber Ensemble.



# PIANO STUDIES AT OREGON



UNIVERSITY  
OF OREGON

## *Master of Music in Piano Pedagogy*

A comprehensive program offering extensive opportunities for performance in solo and chamber music, as well as the teaching of repertoire from elementary to advanced levels. Students gain valuable experience in master classes, group, and private lessons. Facilities include grand pianos, disklaviers, and a Yamaha Clavinova Piano Lab. Graduate teaching fellowships and scholarships available.

### **For more information, contact:**

Dr. Claire Wachter, Director of Piano Pedagogy  
School of Music  
1225 University of Oregon  
Eugene OR 97403-1225  
(541) 346-3758  
cwachter@uoregon.edu



[music.uoregon.edu](http://music.uoregon.edu)

*The Frances Clark Center for Keyboard Pedagogy  
is proud to announce the reissue of a video about  
"America's first lady of piano pedagogy."*

### *Conversations with Frances Clark Her Life and Teachings*



In this full color video, Frances Clark provides an uplifting message that will inspire every piano teacher. See footage of an interview with Frances Clark, teaching demonstrations, and an inside glimpse of the New School for Music Study.

*"The story of Frances Clark is the story of modern piano teaching ...  
There is probably no other single person in the world ... who has had  
more influence on how piano students are taught than Frances Clark."*

Richard Chronister

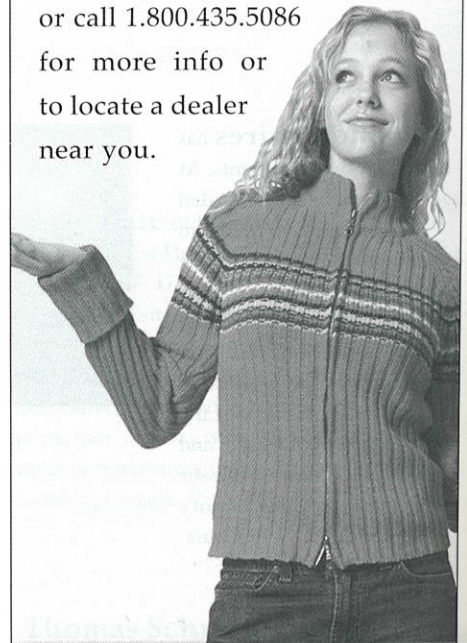
**Available at the NCKP Shop in the Regency Foyer**

*Or to order, contact*

The Frances Clark Center for Keyboard Pedagogy  
Phone: (609) 921-0371 Email: [fccenter@earthlink.net](mailto:fccenter@earthlink.net)  
P.O. Box 651 Kingston, NJ 08528

WOULD I HAVE  
MY OWN PIANO  
IF MY TEACHER  
DIDN'T SUGGEST  
PEARL RIVER?

**P**robably not. It wasn't until my music teacher raved about the quality and price of a Pearl River Piano, that my parents finally considered talking to a Pearl River dealer. They were amazed at the good value, and I am amazed that now it's all mine. Email [Edu@PearlRiverUSA.com](mailto:Edu@PearlRiverUSA.com) or call 1.800.435.5086 for more info or to locate a dealer near you.



*Pearl River*

PEARL RIVER PIANO GROUP  
AMERICA LTD  
2260 S. HAVEN AVE • SUITE F  
ONTARIO, CA 91761-0739

# The Frances Clark Center for Keyboard Pedagogy

## Mission of the Center

The Frances Clark Center for Keyboard Pedagogy was established in 1999 as a not-for-profit corporation (501c3), for the purpose of researching all aspects of keyboard pedagogy and disseminating the findings to the broadest possible community of independent and institutional keyboard educators.

## Work of the Center

- The Center's current projects include:
- The New School for Music Study, a community music school and teacher training center in Princeton, NJ, founded in 1960 by Frances Clark and Louise Goss.
- *Keyboard Companion* magazine, a quarterly periodical for piano teachers, founded in 1990 by Richard Chromister, now owned and published by The Frances Clark Center, Elvina Pearce, Editor-in-Chief.
- The National Conference on Keyboard Pedagogy, reactivated by The Frances Clark Center in 2001.

## Board of Trustees

- Louise L. Goss, Chair
- Marvin R. Blickenstaff, President
- Samuel S. Holland, Executive Director
- Brenda Dillon, Managing Director, *Keyboard Companion*
- Lesley Vial Owsley, Secretary
- Elvina Truman Pearce, Vice President and Director of Pedagogy
- Andrew Steginsky, Director of Development
- Joshua Worby, Treasurer

## Frances Clark

Frances Clark's legendary philosophy of teaching directs the work of The Frances Clark Center for Keyboard Pedagogy. The Board of Trustees includes people who have worked closely with her through the years, as well as other prominent

teachers, pianists, and researchers. It is the purpose of the Center to insure the ongoing influence of her philosophy, as well as to develop, test, and disseminate new applications through its research, seminars, workshops, and conferences.

## Want one good reason to teach with MYC? Here are 25: 1980 - 2005

For 25 years, **Music for Young Children**® (MYC®) has been one of the world's leading music-learning systems—and an excellent career choice for young, aspiring musicians who want to earn a living and build a reputation as music teachers.

Call us or visit MYC online to learn more about teaching opportunities throughout North America and Asia.

[myc.com/teaching](http://myc.com/teaching) or 1.800.561.1MYC

To learn more, contact MYC Head Office:

**International Headquarters**  
39 Leacock Way, Kanata ON K2K 1T1

[career@myc.com](mailto:career@myc.com) Tel: 613.592.7565 Fax: 613.592.9353



The high note in music learning™

**Practical Piano Pedagogy now available through Alfred Publishing. Get answers to your teaching questions at the website below.**

## Dr. Martha Baker-Jordan

Author

"Practical Piano Pedagogy"

Warner Bros. Publications

Visit

<http://www.marthabakerjordan.com>  
for pedagogy questions, answers, insights, news

Phone/Fax: 714/524-2744  
Email: [mbakerjordan@fullerton.edu](mailto:mbakerjordan@fullerton.edu)

Professor of Piano, Piano Pedagogy  
California State University  
Fullerton, CA 92834



## Acknowledgments

We express our grateful thanks to the following individuals and organizations who have contributed generously to the success of the 2005 National Conference on Keyboard Pedagogy.

**Cathy Albergo**, Director of Production  
**Cathy Albergo, Karin Redekopp Edwards**, and **Craig Sale** for coordinating the mini-recitals from their Preparatory Departments.

**American Web, Randy Tyler, President** for printing and distributing the Conference brochure.

**Carmela Casipit**, NCKP and *Keyboard Companion* Advertising Coordinator

**Laura Burns Caufield**, Assistant to the NCKP Executive Director

**Carla Dean Day** for serving as Conference Photographer and Hospitality Chair.

**Doubletree Chicago Oak Brook** for the Conference facilities and for their extraordinary attention to every detail.

**Eastman School of Music** for contributing to the Lifetime Achievement Award reception.

**Faber Piano Institute** for contributing to the Conference Artist reception.  
**Steven Hall**, Stage and Production Manager

**Betsy Jackson Homer**, NCKP Conference Registrar

**Scott Lewis** for layout and production of the Conference Brochure and the Conference Program.

**Mid-American Printing, Inc.** for printing the Conference Program.

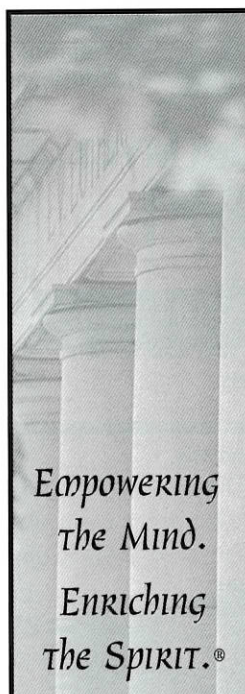
**Music Teachers National Association, Gary Ingle, Executive Director**, for arranging the National Winners' Recital and sponsoring the recital reception.

**Presentation Services** for furnishing and operating the audio-visual equipment.

**Piano Manufacturers** who furnished the pianos and keyboards essential to the recitals, Conference sessions, and technology hubs:

**Geneva International Corporation**  
**Kawai America Corporation**  
**Mason & Hamlin**  
**Pearl River Piano Group**

**Roland Corporation**  
**Steinway & Sons**  
**Yamaha Corporation of America**  
**Research Posters Selection Committee**  
Cynthia Benson      Scott Donald  
Scott Price            Lori Rhoden  
**Steginsky Capital LLC**, underwriter of the Conference Artist concert.



degree programs

Bachelor of Arts in Music  
Bachelor of Music Education  
Director of Parish Music  
Master of Church Music  
Master of Arts in Music  
Certificate in Piano Pedagogy

Empowering  
The Mind.

Enriching  
The Spirit.®

Concordia University, Music Department  
7400 Augusta Street, River Forest, Illinois 60305  
708.209.3060, or crfmusic@curf.edu • www.curf.edu

# Summertrios

Four Exceptional Week-long  
Programs for Pianists

For You and Your Students

Chamber Music

Concerto with Professional Orchestra

June, 2006 in Eastern Pennsylvania  
Info: 212-222-1289; summertrios@summertrios.org  
website: www.summertrios.org

# School of Music

## Keyboard Faculty

Gregory Allen, piano

Nancy Garret, piano

Lita Guerra, piano

Martha Hilley, group piano

Bety Mallard, piano

Jeffrey Hellmer, jazz piano

Anton Nel, piano and chamber music,

### Division Head

David Renner, piano

José Ramón Méndez, accompanying

Rick Rowley, accompanying

Sophia Gilmon, piano pedagogy

Gerre Hancock, organ and sacred music

Judith Hancock, organ and sacred music

Frank Speller, organ

Keyboard students at The University of Texas at Austin School of Music benefit from study with a distinguished artist faculty and access to extraordinary facilities equipped with 12 concert grand pianos and over 85 practice rooms, 39 equipped with Steinway grands. There are also 5 harpsichords, a fortepiano, a four-manual Visser-Rowland tracker organ, a three-manual Reuter organ, and 3 practice organs.

### AUDITIONS

January 28, 2006

February 4, 2006

February 11, 2006\*

February 25, 2006

\*Piano only

THE UNIVERSITY OF TEXAS AT AUSTIN SCHOOL OF MUSIC

1 UNIVERSITY STATION E3100 • AUSTIN, TX 78712-0435 • WWW.MUSIC.UTEXAS.EDU

### UNDERGRADUATE ADMISSIONS

512-471-0504, uga@mail.music.utexas.edu

### GRADUATE ADMISSIONS

512-471-0799, mga@mail.music.utexas.edu

## Advertiser Index

Alfred Publishing Company, Inc.	17
A-R Editions, Inc.	16
Baldwin-Wallace College	34
Baylor University	55
Bowling Green State University	44
Concordia University	52
Damp-Chaser	32
Eastman School of Music	32
The FJH Music Company, Inc.	Back Inside Cover
Frances Clark video	50
Frederick Harris Music	1
G. Henle USA Inc.	42
Hal Leonard Corporation	7
Kawai America Corporation	25
Keyboard Companion Magazine	33
Martha Baker-Jordan	51
Mason & Hamlin Piano Company	43
MTNA	35
Music for Young Children	51
Northwestern University	45
The Ohio State University	32
Pearl River Piano Group	50
Piano Arts	42
PianoPepper.com/JW Pepper & Sons	41
<i>A Piano Teacher's Legacy</i> by Richard Chronister	4
Schaum Publications, Inc.	16
Southern Methodist University	24
Steinway & Sons	15
Summitrios	52
TimeWarp Technologies	14
University of Houston	34
University of Illinois School of Music	13
University of Oklahoma	56
University of Oregon	50
University of South Carolina	14
University of Texas at Austin School of Music	53
University of Texas at San Antonio	42
West Chester University	6
Westminster Choir College of Rider University	16
Wheaton College Conservatory of Music	44
Wichita State University	44
Yamaha Corporation of America	2, 23, & Back Cover

# National Conference on Keyboard Pedagogy

## 2005 Committees, Task Forces, Liaisons

### COMMITTEES

#### Collaborative Performance

Jean Barr, Chair  
Jody Graves  
Andrew Harley  
Laura Melton  
Marilyn Neeley  
Alexandra Nguyen

#### Future Trends

Linda Christensen, Chair  
Mike Bates  
Katie Goins  
Chin-wen Li  
Pamela Pike

#### Historical Perspectives

Connie Arrau Sturm, Chair  
Deborah Brubaker Burns  
Barbara Fast  
Anita Jackson

#### Independent Teachers

Susan See, Chair  
Ann Bader  
Alan Huckleberry  
Sara McDaniel  
Barbara Rivadeneira  
Karen Thickestun

#### Internships/Practica

Beverly K. Lapp, Chair  
Reid Alexander  
Mary Frances Baker  
Victoria McArthur  
Rachael Short

#### Music in Early Childhood

Lorna Lutz Heyge, Chair  
LeAnn Kirkham  
Steve Reen  
Diane Smith  
Janelle Whitby

#### The Pedagogy Student

Katie Goins, Co-Chair  
Tim Shafer, Co-Chair  
Amber Aaron  
Laura Amoriello  
Nan Baker  
Sylvia Coats  
Carla Davis  
Becky Grausam  
Julie Knerr  
Rachel Snyder

#### Research

Mary Tollefson, Chair  
Cynthia Benson  
Scott Donald  
Scott Price  
Lori Rhoden

#### Teaching Adults

Michelle Conda, Chair  
Janet Buswell-Finch  
Ramona Kime Graessle  
Victoria Johnson  
Pamela Pike  
Yu-Jane Yang

#### Technology

George F. Litterst, Chair  
Michelle Gordon  
Kathy Maskell  
Paul Sheftel

#### Wellness for the Pianist

Brenda Wristen, Chair  
Gail Berenson  
Linda Cockey  
Barbara Lister-Sink  
Marcie Zinn

### TASK FORCES

#### Pedagogy Curricula

Frances Larimer, Chair  
Barbara Fast  
Andrew Hisey  
Helen Marlais  
Joan Reist  
Timothy Shafer  
Janice Meyer Thompson  
Kenneth Williams

### LIAISONS

#### NCKP/Industry

Brenda Dillon, Co-Chair  
E.L. Lancaster, Co-Chair  
Karen Koch  
Gail Lew  
Judy Nelson  
Peggy Otwell  
Elaine Rusk  
Joanne Smith

#### Pedagogy/Administration

Jane Magrath, Chair  
Steve Betts  
Ann Milliman Gipson  
Sam Holland  
Lisa Zdechlik

#### Pedagogy/Performance

Phyllis Lehrer, Chair  
Ena Barton  
James Breckenridge  
Tony Caramia  
Chiu-Ling Liu  
Matthew Manwarren  
Helen Marlais  
Paul Sheftel

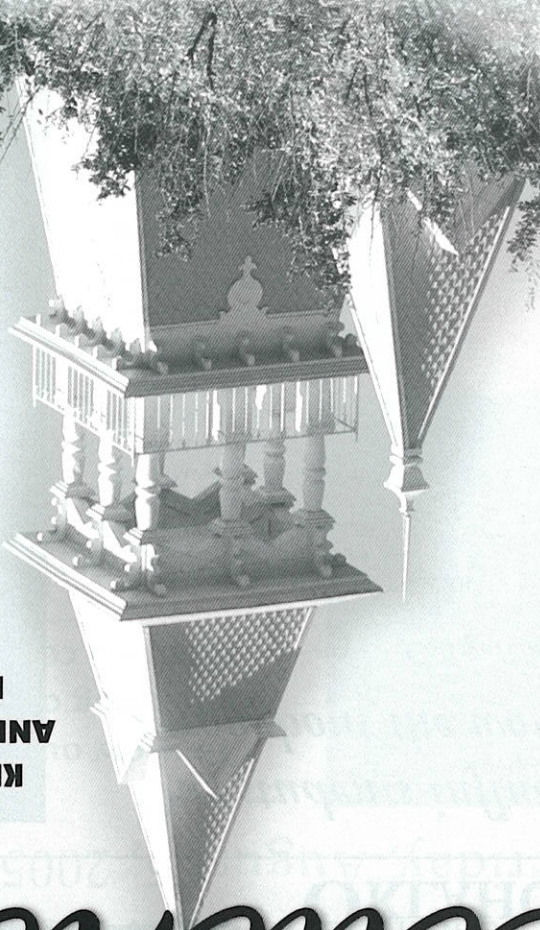
*The National Conference  
on Keyboard Pedagogy  
2007*

**We look  
forward to  
seeing you in  
August 2007!**

Visit [www.FrancesClarkCenter.org](http://www.FrancesClarkCenter.org)  
for details coming soon.

# Excellence...

**HALLMARK OF  
KEYBOARD PERFORMANCE  
AND PEDAGOGY STUDIES AT  
BAYLOR UNIVERSITY FOR  
NEARLY A CENTURY.**



## **PROGRAMS OF STUDY**

- Bachelor of Music: piano performance, piano pedagogy, music history, organ performance, church music, theory/composition.
- Bachelor of Music Education: all-level public school teaching certificate, piano or organ concentration.
- Bachelor of Arts in Music: piano or organ performance.
- Master of Music: piano performance, piano pedagogy, collaborative piano, organ performance, church music.
- Advanced Performers Certificate: piano or organ.
- Certificate in piano pedagogy.

## **FACULTY**

- James Williams, director of keyboard studies
- Jane Abbott-Kirk, piano
- Bradley Bemmigh, harpsichord
- Bradley Bolen, piano
- Ann Gipson, piano pedagogy
- Leta Horan, piano
- Terry Lynn Hudson, piano
- Joyce Jones, organist-in-residence
- Krassimira Jordan, artist-in-residence
- Kristian Klefsjad, piano
- Brian Marks, piano
- Vincent de Vries, collaborative piano



# THE UNIVERSITY OF OKLAHOMA

## PIANO FACULTY

Barbara Fast  
Edward Gates  
Jeongwon Ham  
Howard Lubin  
Jane Magrath

## PIANO PEDAGOGY DEGREE PROGRAMS

Bachelor of Music  
Master of Music  
Master of Music Education  
Doctor of Musical Arts  
Doctor of Philosophy

— Visit us at —  
[music.ou.edu/piano/](http://music.ou.edu/piano/)

*Our students influence piano teaching  
throughout the world!*

— College/University Faculty —

University of Arkansas at Little Rock, AR  
Southern Arkansas University, AR  
University of Central Arkansas, AR  
University of Arizona, AZ  
California State University at Northridge, CA  
Fullerton College, CA  
Mesa Community College, CA  
Pensacola State College, FL  
University of Miami, Coral Gables, FL  
Georgia Southern University, GA  
Georgia State University, GA  
Simpson College, IA  
Iowa State, IA  
Millikin University, IL  
Northwestern University, IL  
William Rainey Harper College, IL  
Butler University, IN  
Goshen College, IN  
Indiana State University, IN  
Indiana University-Indianapolis, IN  
Kansas State University, KS  
Southwestern College, KS  
Louisiana State University, LA  
Central Michigan University, MI  
Lincoln University, MO  
William Jewell College, MO  
Delta State University, MS  
Mississippi State, MS

North Carolina School of the Arts, NC  
Dickinson State University, ND  
Valley City State University, ND  
University of Nebraska - Kearney, NE  
Wayne State College, NE  
SUNY Potsdam, NY  
Cincinnati Conservatory of Music, OH  
Southern Nazarene University, OK  
Oklahoma City University, OK  
Oklahoma Baptist University, OK  
Oklahoma Christian Community College, OK  
Oral Roberts University, OK  
Rose State University, OK  
Southwestern Oklahoma State University, OK  
University of Central Oklahoma, OK  
Valley Forge Christian College, PA  
Bob Jones University, SC  
Presbyterian College, SC  
University of South Carolina, SC  
East Texas Baptist University, TX  
San Angelo State University, TX  
Southern Methodist University, TX  
Tyler Junior College, TX  
Utah State University, UT  
Lawrence University, WI  
University of Wisconsin-Eau Claire, WI  
West Virginia University, WV

— Independent Teachers —

Birmingham, AL  
Montgomery, AL  
El Dorado, AR  
Little Rock, AR  
Maumelle, AR  
Denver, CO

Chicago, IL  
Lawrence, KS  
Topeka, KS  
Rockville, MD  
Marshall, MI  
St. Paul, MN

Billings, MT  
Bethany, OK  
Broken Arrow, OK  
Edmond, OK  
Marietta, OK  
Midwest City, OK

Oklahoma City, OK  
Ponca City, OK  
Shawnee, OK  
Stillwater, OK  
Tulsa, OK  
Yukon, OK

Portland, OR  
Greenville, SC  
Dallas, TX  
Irving, TX  
Midland, TX  
San Antonio, TX

Tyler, TX  
Logan, UT  
Seattle, WA  
Madison, WI  
Singapore  
Taipei, Taiwan  
Leysin, Switzerland

Jane Magrath

University of Oklahoma School of Music

*For additional information:*

500 W. Boyd, Room 138  
Norman OK 73019-2071

(405) 325-4681  
[jmagrath@ou.edu](mailto:jmagrath@ou.edu)

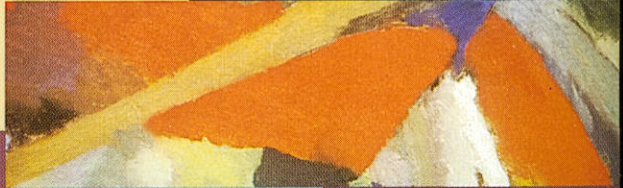
# Join The FJH Music Company

Showcase: Choosing Repertoire  
 Presented by: Dr. Helen Marlais  
 Friday, August 5, 2005

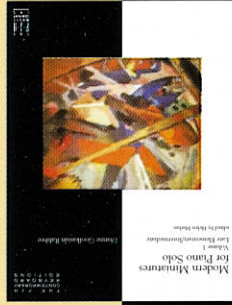


To show our appreciation for  
 attending our showcase, you will  
 receive a complimentary packet!

## SUCCESSING WITH THE MASTERS®



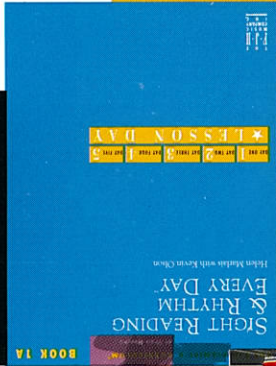
## THE FJH CONTEMPORARY KEYBOARD EDITIONS



## IN RECITAL Throughout the Year™



## SIGHT READING & RHYTHM EVERY DAY™



THE FJH MUSIC COMPANY  
 INC.

# LC2 MUSIC LAB

## New Technology Music Lab System

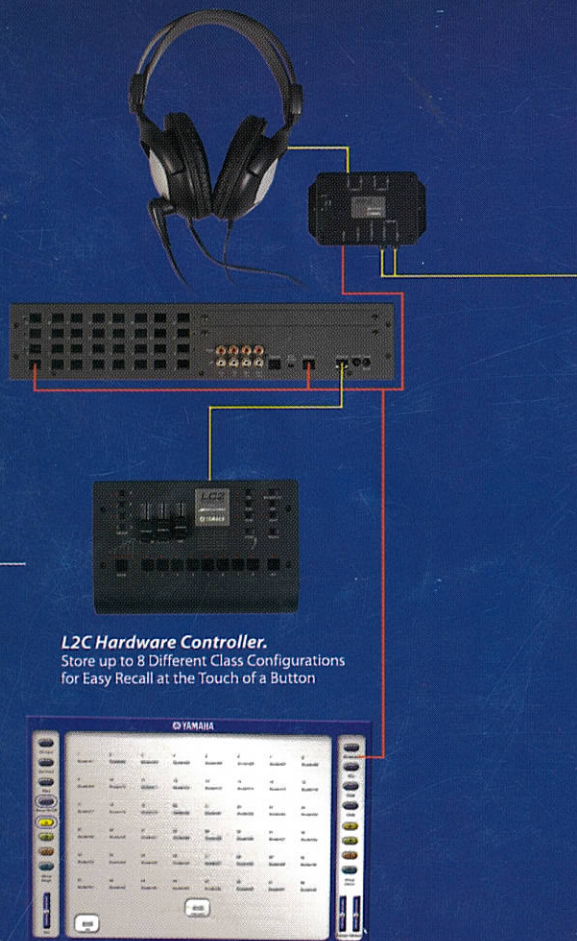
**Modular and Expandable Design with Rack Mounted Hub**

**Basic 8-Channel System can be Expanded to 48 Students**  
(optional expansion cards)

**Perfect Choice For Digital Music Labs**

Piano Labs  
K-12 General Music Labs  
Electronic Percussion  
Silent Guitars, Strings, and Brass

**Less than \$5000 for a Basic 8-Student Music Lab**  
Everything You Need, Including the Keyboards (PSR172)



**L2C Hardware Controller.**  
Store up to 8 Different Class Configurations  
for Easy Recall at the Touch of a Button

**OR**

**Yamaha's Music Lab Management Software.**  
Complete Class Management Tools and Yamaha Multimedia  
Music Software. Name Students and Classes, Keep Attendance  
and Test Score Records



YAMAHA PORTABLES



DIGITAL PIANOS



SILENT BRASS



DIGITAL DRUMS



SILENT STRINGS



SILENT GUITARS



CLAVINOVA®

