



*The National Conference  
on Keyboard Pedagogy  
2003*

**Conference  
Program**

*Extraordinary  
Results with Every  
Student!*

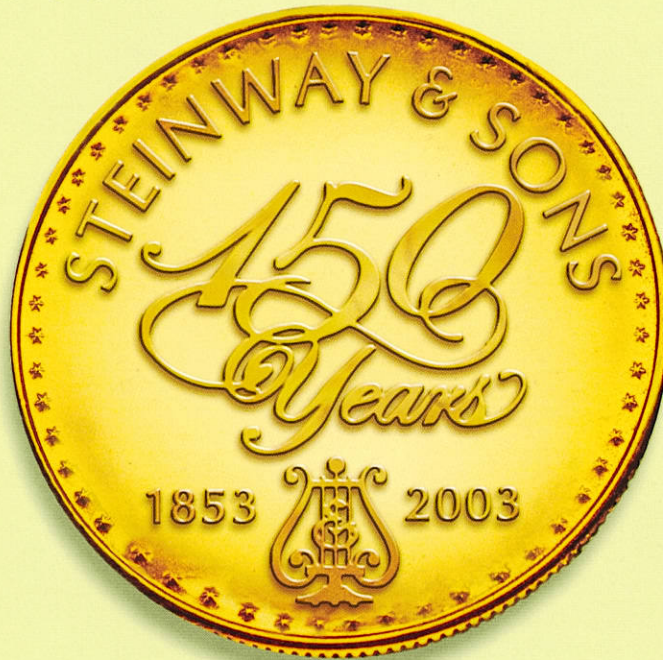
**Thursday-Saturday,  
August 7-9, 2003**

**Pre-Conference Seminars:  
Wednesday, August 6**

**Hyatt Regency Oak Brook  
Oak Brook, Illinois**

[www.FrancesClarkCenter.org](http://www.FrancesClarkCenter.org)

ON OUR 150<sup>TH</sup> ANNIVERSARY  
 WE HAVE REASON TO CELEBRATE.  
 99% OF CONCERT PIANISTS  
 CHOOSE TO PLAY STEINWAY.



THE STANDARD OF EXCELLENCE

2001/2002 Concert Season:	Steinway   Others		Steinway   Others		Steinway   Others
Akron Symphony Orchestra	1   0	Houston Symphony	7   0	Orlando Philharmonic Orchestra	4   0
Albany (GA) Symphony Orchestra	1   0	Indianapolis Symphony Orchestra	10   0	Pacific Symphony	5   0
Anchorage Symphony Orchestra	1   0	Jacksonville Symphony Orchestra	6   0	Pasadena Symphony	2   0
Atlanta Symphony Orchestra	7   0	Kansas City Symphony	3   0	The Philadelphia Orchestra	10   0
Austin Symphony Orchestra	3   0	Knoxville Symphony Orchestra	3   0	The Phoenix Symphony	3   0
Baltimore Symphony Orchestra	12   0	Lexington Philharmonic	1   0	Pittsburgh Symphony Orchestra	8   0
Bismarck-Mandan Symphony Orchestra	1   0	Long Beach Symphony Orchestra	2   0	Portland Symphony Orchestra	3   0
Boise Philharmonic	1   0	Los Angeles Philharmonic	10   0	Quad City Symphony Orchestra	1   0
Boston Symphony Orchestra	9   1	Louisiana Philharmonic Orchestra	4   0	Reno Chamber Orchestra	1   0
Calgary Philharmonic Orchestra	6   0	The Louisville Orchestra	3   0	Richmond Symphony	3   0
Chicago Symphony Orchestra	9   0	Memphis Symphony Orchestra	3   0	Rochester Philharmonic Orchestra	7   0
Cincinnati Symphony Orchestra	9   0	Milwaukee Symphony Orchestra	6   0	Saint Louis Symphony Orchestra	9   0
The Cleveland Orchestra	4   0	The Minnesota Orchestra	5   0	Saint Paul Chamber Orchestra	10   0
Colorado Symphony Orchestra	8   0	Mississippi Symphony Orchestra	3   0	San Antonio Symphony	6   0
Columbus Symphony Orchestra	7   0	Naples Philharmonic Orchestra	3   0	San Diego Symphony	3   0
Dallas Symphony Orchestra	6   0	Nashville Symphony	5   0	San Francisco Symphony	7   0
Dayton Philharmonic Orchestra	3   0	National Symphony Orchestra	16   0	Seattle Symphony Orchestra	8   0
Detroit Symphony Orchestra	8   0	New Jersey Symphony Orchestra	4   0	Spokane Symphony Orchestra	4   0
Erie Philharmonic	2   0	New Mexico Symphony Orchestra	5   0	Syracuse Symphony Orchestra	4   0
Eugene Symphony	3   0	New West Symphony	4   0	Toledo Symphony Orchestra	5   0
Evansville Philharmonic Orchestra	2   0	New York Chamber Symphony	2   0	Toronto Symphony Orchestra	12   1
The Florida Orchestra	9   0	New York Philharmonic	7   0	Tucson Symphony Orchestra	2   0
Florida Philharmonic Orchestra	6   0	The New York Pops	3   0	Tulsa Philharmonic Orchestra	2   0
Florida West Coast Symphony	3   0	North Carolina Symphony	3   0	Utah Symphony	5   0
Fox Valley Symphony	2   0	Oklahoma City Philharmonic Orchestra	4   0	Vancouver Symphony	11   0
Fort Worth Symphony Orchestra	4   0	Omaha Symphony Orchestra	4   0	Virginia Symphony	5   0
Fresno Philharmonic Orchestra	4   0	Orchestre Symphonique de Montreal	14   0	Westchester Philharmonic	2   0
Greater Trenton Symphony Orchestra	2   0	Oregon Symphony	8   0	Wichita Symphony Orchestra	4   0
Hartford Symphony Orchestra	1   0			Winnipeg Symphony Orchestra	7   0

150 years ago, Steinway & Sons brought a new sound to the world. A sound with a beauty and emotion never heard before, or equaled since. From that moment on, the world's greatest pianists have formed an



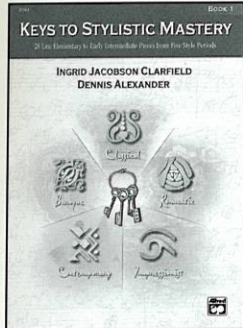
inseparable relationship with Steinway pianos. We invite you to share the excitement of this historic year by filling your home with the incomparable sound and joy that only a handmade Steinway piano can bring to your life.

STEINWAY & SONS

One Steinway Place, Long Island City, New York 11105. 1-800-366-1853. www.steinway.com

©2003 Steinway & Sons. Steinway and the Lyre are registered trademarks.

# Help your students achieve Technical, Stylistic & Artistic Mastery



21363

## Keys to Stylistic Mastery, Book 1

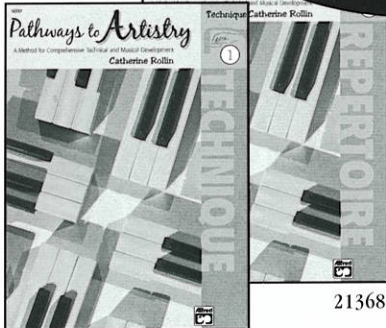
by Ingrid Jacobson Clarfield & Dennis Alexander

Late Elementary to Early Intermediate (56 pages) \$8.50

Designed to teach the basic principles of the five stylistic periods—Baroque, Classical, Romantic, Impressionist and Contemporary—*Keys to Stylistic Mastery, Book 1* includes 28 pieces that have been carefully chosen for their musical appeal and effectiveness in

conveying stylistic traits. Students will learn to apply stylistic principles, thus providing a helpful transition from method books to the classics.

You can use this series:  
• as a method  
• with any method



16597

## Pathways to Artistry

by Catherine Rollin

Technique Book 1 (40 pages) \$7.95

Repertoire Book 1 (32 pages) \$6.95

After acquiring basic reading skills, students are ready to begin this innovative series designed to emphasize artistry in the early stages of piano study. The series introduces basic technical skills and expands the student's knowledge of style, form and artistic ideas.

**Menuet in D Minor**  
Jean-Baptiste Lully (1632-1687)

**Keys to this piece:**

- Both hands are equally important. Bring out the LH answering motive.
- Sometimes the hands play contrasting touches at the same time.
- Add mordent (♯) and trills (≡) second time only.

**THE BAROQUE PERIOD**  
(1600-1750)

**COMPOSERS**  
Johann Sebastian Bach (1685-1750)  
François Couperin (1668-1733)  
George Frideric Handel (1685-1759)  
Jean-Baptiste Lully (1632-1687)  
Jean-Philippe Rameau (1683-1764)  
Domenico Scarlatti (1685-1757)  
Georg Philipp Telemann (1681-1767)

**Keyboard Instruments**  
Clavichord  
Harpsichord  
Organ

**Typical Forms**

**KEYS TO STYLISTIC MASTERY**

**Melody**  
Includes short motives, often repeated starting on another pitch.  
Vary dynamics when motive repeats.  
Choice of articulation affects the character.  
In general, play stepwise motion legato and play skips and upbeats detached.

**Rhythm**  
Often based on popular dance steps.  
Learn about the dance so you can understand how the steps affect the rhythm.

**Harmony**  
Written in major or minor keys with shifts to closely related keys.  
Identify the key of each section to help you learn and memorize the piece.  
Warm up with a scale in the key of the piece. This will help you remember sharps or flats in the key and to hear the tonality.

**Tempo**  
Must be steady, often with a slight ritardando at the final cadence.  
Learn the music using a metronome.

The Technique Book gives students a verbal vocabulary that describes the physical skills needed to play music artistically and with technical assurance.

The Repertoire Book provides newly composed music which reviews the techniques being taught, and bridges the gap between early levels of method books and intermediate masterwork repertoire.

Unit Two Basic Technical Skills 7-12

**Arm-to-Arm Independence**  
Arm-to-Arm Independence is the skill of doing one motion with one arm and a different motion with the other arm at the same time.

**Preparation before Playing**  
On a tabletop or the fallboard, practice the different motions of the following exercises, hands separately and then hands together.

**Three Steps for Developing Arm-to-Arm Independence:**

- Practice hands separately at first.
- Practice hands together slowly.
- Be patient! Developing the brain connections for arm-to-arm independence takes time.

**Little Invention**  
Inspired by the modal sounds used in many contemporary works.  
Prepares the student to perform music from the:

- Baroque Era ca. 1600-1750
- Classical Era ca. 1750-1820
- Romantic Era ca. 1790-1910
- Contemporary Era ca. 1900-present

**SECTION 1**  
Moderate (Moderately) using figures

**SECTION 2**  
Balanced ternary and fermata

**SECTION 3**  
A tempo

**SECTION 4**  
A tempo

**SECTION 5**  
A tempo

*Catherine Rollin*

Now available from your favorite music supplier.

Give your students the tools they need to succeed!

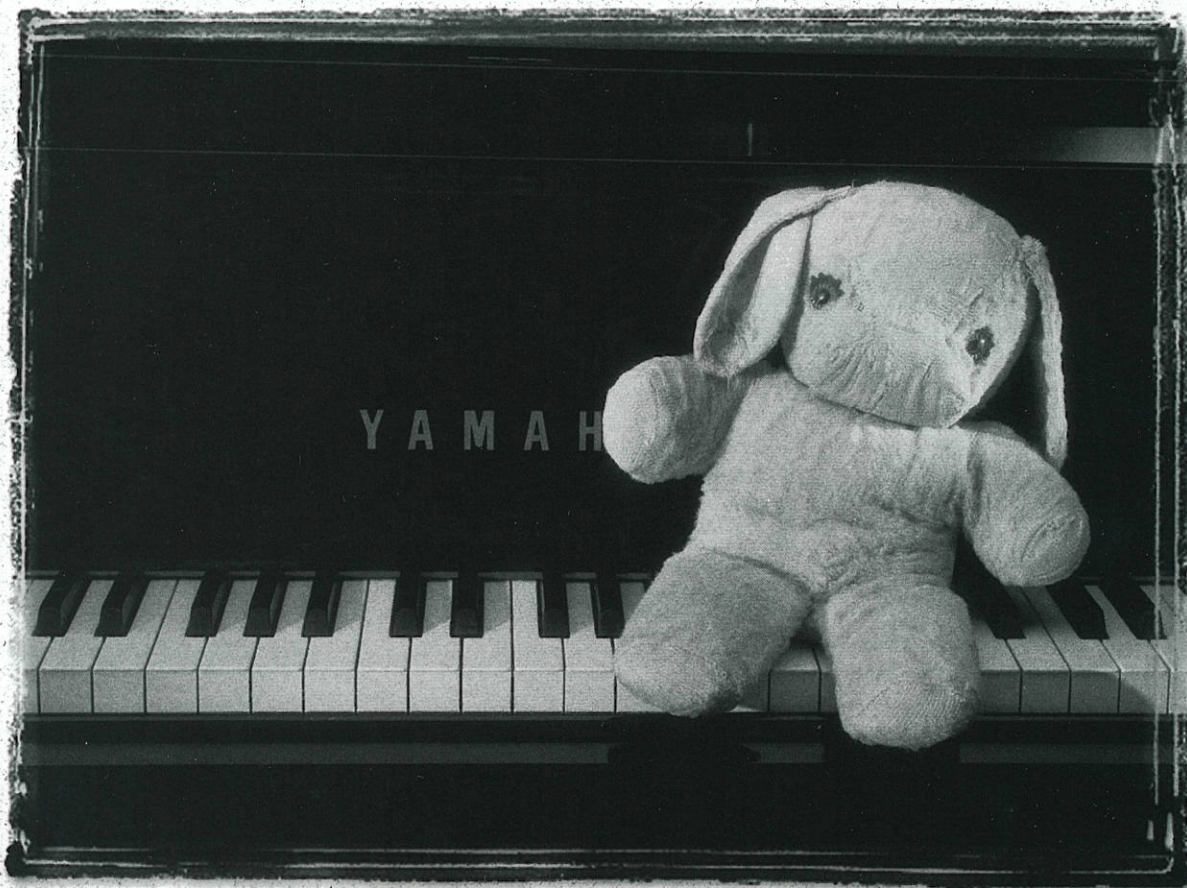
To request a FREE Alfred's Essential Teaching Tools Catalog, e-mail [customerservice@alfred.com](mailto:customerservice@alfred.com) or call (818) 892-2452.



Alfred Publishing Co., Inc.  
[www.alfred.com](http://www.alfred.com)

wo 41707

Some things from  
childhood  
stay with you  
forever.



A favorite doll provides comfort and **security**.  
And a **piano education** builds coordination, verbal abilities  
and abstract **reasoning**. Together they lead to a promising future.

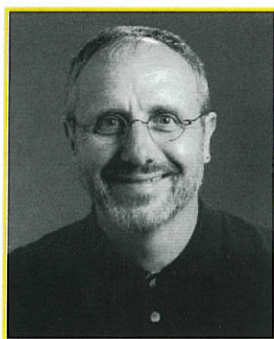


CREATING 'KANDO' TOGETHER

# Welcome to the conference



Louise Goss  
Chair, The Board of Trustees  
The Frances Clark Center for  
Keyboard Pedagogy



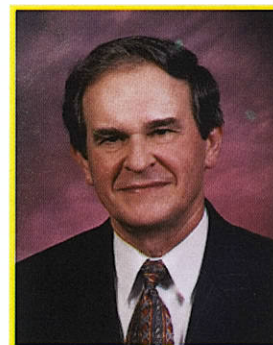
Samuel S. Holland  
Executive Director  
The Frances Clark Center for  
Keyboard Pedagogy

## Greetings

It is my great pleasure to welcome you to the 2003 National Conference on Keyboard Pedagogy. The conference planning committee has worked long and hard to prepare for these days together, and we are delighted you are here.

In the welcome to the 2001 Conference, I wrote: "Perhaps never before in the history of piano pedagogy has there been such an illustrious gathering of musical and pedagogical greats – artists, teachers, pedagogues, and music educators. The pages of this Conference Program read like a 'Who's Who' of leaders in our field." That same claim can be made again this year, with the enriching addition of experts in the field of musical technology.

Ever since the Conference was revived in 2001, it has been our aim to carry on and extend the legacies of two great pedagogical leaders: Frances Clark and Richard Chronister. Frances, whose work dominated the development of piano pedagogy in the last half of the 20th century, was Richard's teacher and lifelong friend. Richard, her student, colleague, and champion, founded both the original National Conference on Piano Pedagogy and *Keyboard Companion* magazine.



Marvin Blickenstaff  
President, The Board of Trustees  
The Frances Clark Center for  
Keyboard Pedagogy

We believe we have been successful in keeping the conference focused on its original goal: a meeting of keyboard educators centered on the dynamics of the teaching/learning process. In addition, as befits the 21st century, we have extended the original purpose of the Conference to include every aspect of music and technology.

In the 2003 Conference, we trust you will find a satisfying blend of great artistry with practical and inspiring pedagogy. In addition, there is a wide variety of topics relevant to the interests of both independent teachers and those who deal with college and university pedagogy programs.

Thank you for joining us. We look forward to sharing with you the stimulation and enrichment of all that will follow in the days to come.

Louise Goss  
Chair, The Board of Trustees  
The Frances Clark Center for Keyboard Pedagogy

## Table of contents

Pre-Conference Seminars	6
Conference Day One	14
Technology Hubs	17
Poster Sessions	20
Royal American Conservatory Examinations	20
Conference Day Two	26
Conference Day Three	36
The Frances Clark Center for Keyboard Pedagogy	42
Index of Advertisers	43
Acknowledgements	44
National Conference on Keyboard Pedagogy Committees	46

# Are You

# CERTIFIED?

**T**he MTNA Certification Program exists to improve the level of professionalism within the field of applied music teaching. It benefits the members of the profession, as well as the public who interacts with the profession. For the music teaching professional, MTNA certification provides prestige, recognition and the potential for student recruitment and increased earning power. For the public, MTNA



certification helps readily identify competent applied music teachers in their communities.

The designation of Nationally Certified Teacher of Music (NCTM) is given to successful candidates who meet the professional competencies and standards required for MTNA Certification. All applied music teachers actively engaged in the profession are eligible for MTNA Certification.

## Here's what YOUR colleagues are saying about MTNA Professional Certification:

"One of the privileges of being a member of MTNA is the assurance that the organization is dedicated to encouraging excellence in the teaching of music. Nothing speaks to this more eloquently than the National Certification Commission. I know of no other program that offers this degree of professionalism to your prospective students."



—Nelita True, NCTM  
Pianist and Performer  
Eastman School of Music

"It's crucial to have a nationally recognized standard of excellence in music teaching. This will give the independent music teacher added credibility in the community and increased professional stature, as well as the ability to charge a higher fee."



—Scott McBride Smith, NCTM  
MTNA Board of Directors  
President/CEO, International  
Institute for Young Musicians  
Independent Music Teacher

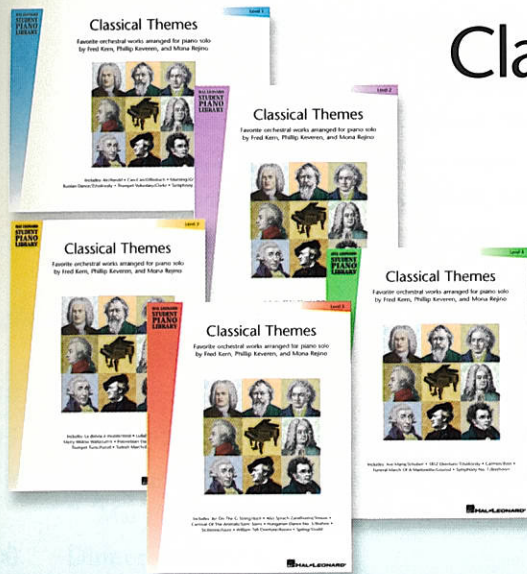
Detailed descriptions of the requirements and all forms and fee information are available on the MTNA Certification website at [www.mtnacertification.org](http://www.mtnacertification.org) and from MTNA national headquarters. To request a copy, e-mail [mtnacertification@mtna.org](mailto:mtnacertification@mtna.org) or phone (888) 512-5278, ext. 237.



# Hal Leonard Student Piano Library

## Introduce Your Students to the Great Composers of Yesterday and Today!

Presenting 2 NEW Series in the Hal Leonard Student Piano Library



### Classical Themes for Piano Solo

Introduce your students to favorite orchestral classics! The *Classical Themes* series features carefully graded and arranged piano solos for Levels 1-5. Historical information about each work is included in each level and Levels 2-5 include a *Music History Timeline*. Arranged by Fred Kern, Phillip Keveren, and Mona Rejino.

- Classical Themes Level 1 ..... \$5.95
- Classical Themes Level 2 ..... \$5.95
- Classical Themes Level 3 ..... \$5.95
- Classical Themes Level 4 ..... \$5.95
- Classical Themes Level 5 ..... \$6.95

CD and GM Accompaniments available for all five levels.



### Composer Showcase Series

Treat your students to original works by today's top composers! The *Composer Showcase Series* features graded piano music in a variety of styles by favorite Hal Leonard Student Piano Library composers.

- |                             |                 |                         |        |
|-----------------------------|-----------------|-------------------------|--------|
| Jazz Starters               | Bill Boyd       | Elementary.....         | \$6.95 |
| Coral Reef Suite            | Carol Klose     | Late Elementary.....    | \$5.95 |
| Explorations In Style       | Bruce Berr      | Late Elementary.....    | \$6.95 |
| Imaginations In Style       | Bruce Berr      | Late Elementary.....    | \$5.95 |
| Jazz Starters II            | Bill Boyd       | Late Elementary.....    | \$6.95 |
| Jazz Starters III           | Bill Boyd       | Late Elementary.....    | \$6.95 |
| Tex-Mex Rex                 | Phillip Keveren | Late Elementary.....    | \$5.95 |
| Think Jazz!                 | Bill Boyd       | Early Intermediate..... | \$9.95 |
| Concerto For Young Pianists | Matthew Edwards | Intermediate.....       | \$9.95 |
| Jazz Delights               | Bill Boyd       | Intermediate.....       | \$6.95 |
| Les Petites Impressions     | Jennifer Linn   | Intermediate.....       | \$6.95 |

To order these and more great supplementary books, please see your local music dealer.

Join us for  
**The 2003 Piano Day Spa**  
 in Milwaukee, WI on Saturday, August 16, 2003! Call  
**1-800-322-1127 ext. 302**  
 for more information and other dates and locations in 2003.



7777 W. BLUEMOUND RD. P.O. BOX 13819 MILWAUKEE, WI 53213

Visit Hal Leonard online at [www.halleonard.com](http://www.halleonard.com)

# Wednesday: Pre-Conference Seminars

## **Seminar for the Independent Teacher**

### **Breaking the Mold: The 21st Century Keyboard Professional**

**Wednesday, August 6 Oak Brook Ballroom**

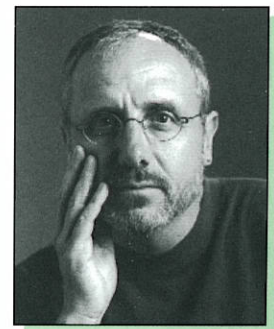
- 2:00 Plenary Session, *Oak Brook Ballroom*  
Keynote Address: Sam Holland, *Survivor: The Keyboard Teacher 2003*
- 2:20 Introduction of the IMT Seminar  
Beth Klingenstein, Chair, NCKP Committee on Independent Teachers
- 2:30 *New Respect for Our Profession: Polishing our image and nurturing our musical spirits*  
Sara McDaniel
- 3:40 *Studio Design: Fresh looks at equipment, space, decor, long-range planning, and more*  
Nancy Davis
- 4:40 Break
- 5:15 Plenary Session, *Oak Brook Ballroom*  
*Separating Myth from Reality in Piano Teaching: Research isn't just for scientists*  
Mary Tollefson
- 6:00 Dinner Break
- 7:30 *The Professionalism Portfolio: Business skills to benefit students, parents, and teachers*  
Helen Smith Tarchalski
- 8:30 *The Summer Anti-Slump: Creative paths to student motivation and teacher income*  
Jill Christian and Beth Klingenstein
- 9:30 End of IMT Seminar

## **Keynote speakers**

### **Samuel S. Holland**

#### ***Survivor: The Keyboard Teacher 2003***

**Samuel S. Holland** is Head of Keyboard Studies at Southern Methodist University. He has pioneered new technology in music education, co-authored *The Music Tree* (Warner Bros., 2000), and presented lectures and recitals on three continents.



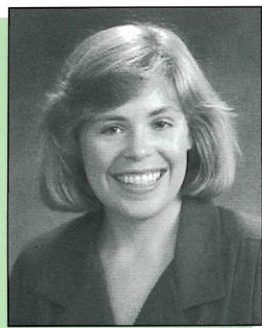
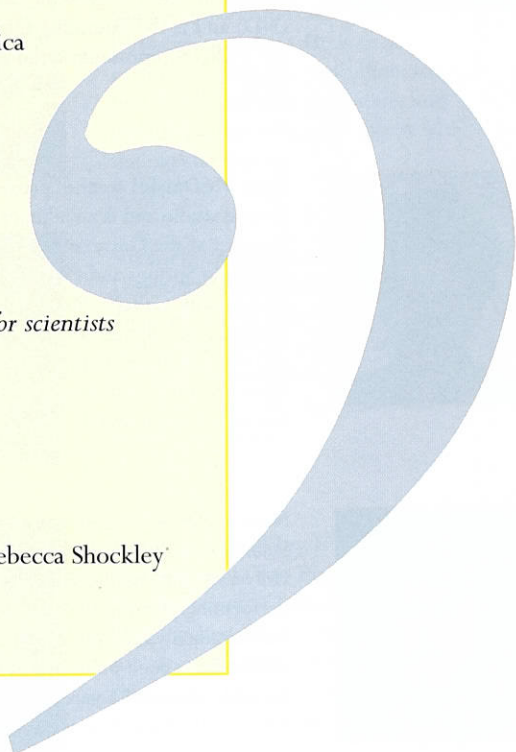


**Seminar for Collegiate Teachers of Piano Pedagogy**

**The Pedagogy Intern: Efficient and Effective Evaluation**

**Wednesday, August 6 Hunt Room**

- 2:00 Plenary Session, *Oak Brook Ballroom*  
Keynote Address: Sam Holland, *Survivor: The Keyboard Teacher 2003*
- 2:20 Introduction of the Collegiate Seminar  
Beverly K. Lapp, Chair, NCKP Committee on Internships/Practica
- 2:30 *Evaluating Teacher Behaviors*  
Robert A. Duke
- 3:40 *Feedback in Realtime*  
Bruce Berr
- 4:40 Break
- 5:15 Plenary Session, *Oak Brook Ballroom*  
*Separating Myth from Reality in Piano Teaching: Research isn't just for scientists*  
Mary Tollefson
- 6:00 Dinner Break
- 7:30 *Evaluating Musical Issues*  
Timothy Shafer and Pete Jutras
- 8:30 *Time Savers for Pedagogy Teachers*  
Sam Holland (moderator), Victoria McArthur, Robert A. Duke, Rebecca Shockley
- 9:30 End of Collegiate Seminar



**Mary Tollefson**

***Separating Myth from Reality in Piano Teaching: Research isn't just for scientists***

Mary Tollefson is Associate Professor of Piano at the University of Wisconsin-La Crosse where she teaches piano, group piano, and piano pedagogy. She has had articles published in *Keyboard Companion*, *Piano Pedagogy Forum*, and *American Music Teacher*. She currently serves Wisconsin's state MTNA association as newsletter editor.

## Seminar for the Independent Teacher

### Presenters



**Beth Gigante Klingenstein** is nationally known for her work on business policies for the independent music teacher. The author of *A Business Guide for the Music Teacher*, she taught as an independent music teacher for 28 years. She is presently on the music faculty of Valley City State University (ND) and is the Founding Director of the VCSU Community School of the Arts.



**Helen Smith Tarchalski** is an independent teacher in Gaithersburg, MD and director of the Annapolis School of Music. She has published software through Electronic Courseware Systems. At the Peabody Conservatory she studied with Fernando Laires. She is an associate editor of *Keyboard Companion* magazine.



**Sara McDaniel** teaches piano in a private studio and is an adjunct faculty member at the University of Colorado/Colorado Springs and Pikes Peak Community College. She is a performer, clinician, and adjudicator in Colorado and the western region. In 2001, she was Colorado's first nominee for MTNA's *Teacher of the Year Award*.



**Jill J. Christian**, a past president of the Michigan MTA and MMTA *Teacher of the Year*, has been adjunct professor of piano at Kalamazoo College since 1975. The MMTA honored her with a *Distinguished Service Award* for founding *Bravo!*, a concert series highlighting gifted high school musicians in S.W. Michigan.



**Nancy Davis** is a graduate of Arizona State University and George Washington University. She has been teaching and performing piano in the U.S. and internationally for over 25 years. Her articles have been published in *Piano and Keyboard*, *Keyboard Companion*, and *Electronic Musician's Buyer's Guide*.

pppp

### National Conference on Keyboard Pedagogy Committee on Independent Teachers

Beth Klingenstein, Chair  
Jill Christian  
Mary Jane Clarke

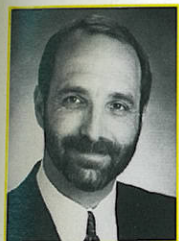
Vivian Dula  
Sara McDaniel  
Martha K. Smith

# Seminar for Collegiate Teachers of Piano Pedagogy

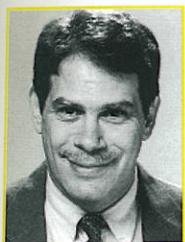
## Presenters



**Beverly Lapp** teaches piano and piano pedagogy at Goshen College (IN), where she also directs the Piano Preparatory Department and co-coordinates the annual Piano Workshop, a summer event for piano teachers and students. She has degrees from Goshen College and Westminster Choir College of Rider University.



**Robert A. Duke** is the Marlene and Morton Meyerson Centennial Professor of Music and Human Learning, University Distinguished Teaching Professor, and Director of the Center for Music Learning at The University of Texas at Austin. Dr. Duke serves on the editorial boards of the *Journal of Research in Music Education*, the *Bulletin of the Council for Research in Music Education*, and *Psychomusicology*.



**Bruce Berr** is a nationally recognized independent and college teacher of piano and pedagogy. He is an associate editor and webmaster for *Keyboard Companion* magazine, and has numerous educational piano compositions in print. He has presented teacher clinics and master classes across the country.



**Pete Jutras** maintains an independent teaching studio in Dallas, TX where he is also an active adjudicator, composer, and author. He teaches group piano classes for adults in a program he founded at Southern Methodist University. His degrees are from the University of North Texas, the Eastman School of Music, and Southern Methodist University.



**Timothy Shafer** is Professor of Piano at Penn State where he teaches studio piano and coordinates the class piano and pedagogy programs. He is an active performer, clinician, and adjudicator for professional music organizations and colleges, and is a frequent soloist with regional orchestras.



**Victoria McArthur** is Program Director of Piano Pedagogy and Group Piano at Florida State University, a keyboard editor for Alfred Publishing Co., maintains an independent studio, and writes educational piano music for students of all ages.



**Rebecca Shockley** is Professor of Piano Pedagogy and Class Piano Coordinator at the University of Minnesota. The author of *Mapping Music* (A-R Editions 1997), she has given workshops for teachers throughout the US and in England, Canada, Taiwan, China, and Korea.

## National Conference on Keyboard Pedagogy Committee on Internships/Practica

Beverly Lapp, Chair

Sam Holland

Reid Alexander

Victoria McArthur

Mary Frances Baker

Rachael Short

Yu-Jane Yang

## National Conference on Keyboard Pedagogy Committee on the Pedagogy Student

Peter Jutras, Co-Chair

Tim Shafer, Co-Chair

## Introducing...



Robert Koenig has joined the faculty as Assistant Professor of Piano and major advisor in chamber music for the B.M., M.M. and D.M.A. degrees in Piano. He is a much sought-after collaborative artist who has toured internationally with many acclaimed artists including Sarah Chang, Hilary Hahn, Elmar Oliveira, and Aaron Rosand. Mr. Koenig has appeared at numerous festivals including Aspen, Ravinia, Caramoor, and Mostly Mozart in New York and on television programs including ABC's "Good Morning America" and CBS "This Morning." His most recent CD with violist Robert Diaz was released on the Naxos label.

## Announcing...

Christopher Hepp, Associate Professor of Piano, has created the first piano method that integrates the digital piano, computer and Internet for beginning instruction of children or adults in both class and private lessons. He is co-founder of PianoAmerica, the nation's first franchise business that combines piano retail and instruction, whose pilot store is located in Lawrence, Kansas. Pedagogy students enrolled in the B.M., M.M., and D.M.A. piano degree programs in Piano gain small business experience and training as well as knowledge and skills in the latest music technology for piano instruction.



## *Preserving the Legacy, Defining the Future*

### Keyboard Studies at SMU - Meadows School of the Arts, Division of Music

#### KEYBOARD FACULTY

Joaquín Achúcarro  
*piano*

Carol Leone  
*piano*

Mary Frances Baker  
*pedagogy, preparatory*

Alfred Mouledous  
*piano*

Sam Holland  
*piano, pedagogy*  
*Department Head*

Larry Palmer  
*harpsichord, organ*

David Karp  
*piano*



#### DEGREE PROGRAMS

- B.M. in Performance, Pedagogy Emphasis, Music Education, Composition, Theory and Music Therapy
- M.M. in Performance, Performance and Pedagogy, Music Education, Composition, Theory, Music Literature and Conducting
- B.A. in Music
- Artist Certificate in Piano and Organ

• The National Piano Teachers Institute is a summer program offering seminars to enrich and instruct, educate and inspire. Celebrating its 20th year at SMU, the NPIT provides interaction with nationally and internationally known clinicians; masterclasses for student and teachers; and showcases of the latest publications and technology.

For more information on any of these programs, please contact:

SMU - Meadows School of the Arts  
 Division of Music  
 PO Box 750356  
 Dallas, TX 75275-0356  
 Ph: 214.768.1951  
 Fax: 214.768.4669  
[meadows.smu.edu](http://meadows.smu.edu)

# THE UNIVERSITY OF OKLAHOMA

## PIANO FACULTY

Barbara Fast  
Edward Gates  
Jeongwon Ham  
Howard Lubin  
Jane Magrath

## PIANO PEDAGOGY DEGREE PROGRAMS

Bachelor of Music  
Master of Music  
Master of Music Education  
Doctor of Musical Arts  
Doctor of Philosophy

— Visit us at —

[music.ou.edu/divisions/piano/](http://music.ou.edu/divisions/piano/)

*Our students influence piano teaching  
throughout the world!*

— College/University Faculty —

University of Arkansas at Little Rock, AR	North Carolina School of the Arts, NC
Southern Arkansas University, AR	Dickinson State University, ND
University of Central Arkansas, AR	Valley City State University, ND
University of Arizona, AZ	University of Nebraska - Kearney, NE
California State University at Northridge, CA	Wayne State College, NE
Fullerton College, CA	SUNY Potsdam, NY
Mesa Community College, CA	Cincinnati Conservatory of Music, OH
Pensacola State College, FL	Southern Nazarene University, OK
University of Miami, Coral Gables, FL	Oklahoma City University, OK
Georgia Southern University, GA	Oklahoma Baptist University, OK
Georgia State University, GA	Oklahoma Christian Community College, OK
Simpson College, IA	Oral Roberts University, OK
Iowa State, IA	Rose State University, OK
Millikin University, IL	Southwestern Oklahoma State University, OK
Northwestern University, IL	University of Central Oklahoma, OK
William Rainey Harper College, IL	Valley Forge Christian College, PA
Butler University, IN	Bob Jones University, SC
Goshen College, IN	Presbyterian College, SC
Indiana State University, IN	University of South Carolina, SC
Indiana University-Indianapolis, IN	East Texas Baptist University, TX
Kansas State University, KS	San Angelo State University, TX
Southwestern College, KS	Southern Methodist University, TX
Louisiana State University, LA	Tyler Junior College, TX
Central Michigan University, MI	Utah State University, UT
Lincoln University, MO	Lawrence University, WI
William Jewell College, MO	University of Wisconsin-Eau Claire, WI
Delta State University, MS	West Virginia University, WV
Mississippi State, MS	

— Independent Teachers —

Birmingham, AL	Chicago, IL	Billings, MT	Oklahoma City, OK	Portland, OR	Tyler, TX
Montgomery, AL	Lawrence, KS	Bethany, OK	Ponca City, OK	Greenville, SC	Logan, UT
El Dorado, AR	Topeka, KS	Broken Arrow, OK	Shawnee, OK	Dallas, TX	Seattle, WA
Little Rock, AR	Rockville, MD	Edmond, OK	Stillwater, OK	Irving, TX	Madison, WI
Maumelle, AR	Marshall, MI	Marietta, OK	Tulsa, OK	Midland, TX	Singapore
Denver, CO	St. Paul, MN	Midwest City, OK	Yukon, OK	San Antonio, TX	Taipei, Taiwan
					Leysin, Switzerland

*For additional information:*

**Jane Magrath**  
University of Oklahoma School of Music

500 W. Boyd, Room 138  
Norman OK 73019-2071

(405) 325-4681  
[jmagrath@ou.edu](mailto:jmagrath@ou.edu)

Herberger College  
of Fine Arts

# School of Music

AT ARIZONA STATE UNIVERSITY

## GRADUATE STUDY IN PIANO PEDAGOGY

D.M.A. IN PERFORMANCE/PEDAGOGY

M.M. IN PERFORMANCE/PEDAGOGY

### School of Music Keyboard Faculty

Andrew Campbell, accompanying

Walter Cosand, piano

Robert Hamilton, piano

Charles Marohnic, jazz studies

Kimberly Marshall, organ

Baruch Meir, piano

John Metz, harpsichord, early music

Caio Pagano, piano

Eckart Sellheim, accompanying

Janice Meyer Thompson, piano, pedagogy

Madeline Williamson, group piano, pedagogy

### Audition/Admissions/Info:

Dr. Kimberly Marshall,  
Associate Director for Graduate Studies  
School of Music  
Herberger College of Fine Arts  
Arizona State University  
Tempe, AZ 85287-0405  
E-mail: Kimberly.Marshall@asu.edu

<http://music.asu.edu>

**ASU** ARIZONA STATE  
UNIVERSITY

Insurance  
Now  
Available  
Exclusive to  
MTNA  
Members

# It's Time YOU Join MTNA

As a member of Music Teachers National Association, you will enjoy:

- ◆ A vast network of music teaching professionals, performers and pedagogues
- ◆ Access to numerous informative resources such as *American Music Teacher* magazine
- ◆ Opportunities for advancing your education and career through conferences, seminars, workshops and the MTNA Professional Certification Program
- ◆ Experiences enriching your career and life that you will cherish for a lifetime

For a membership application,  
contact MTNA at:

441 Vine St., Ste. 505

Cincinnati, OH 45202

Phone: (888) 512-5278

Fax: (513) 421-2503

E-mail: [mtnanet@mtna.org](mailto:mtnanet@mtna.org)

Website: [www.mtna.org](http://www.mtna.org)

Where teaching and performing are mutually beneficial art forms.

# PENNSSTATE



Piano Faculty:

Marylène Dosse, First Prize Paris Conservatory

Timothy Shafer, D.Mus.

Steven Smith, D.M.A.

M.M. in Piano Pedagogy and Performance

Graduate programs in pedagogy, performance and music education • Ph.D. in music education • Undergraduate programs in music education and performance  
For graduate information, contact: Susan Spaugh (814) 865-0431 • For undergraduate information, contact: Irene Lucas (814) 863-0418

[www.music.psu.edu](http://www.music.psu.edu)

# Thursday: Conference Day One

## Conference Day One Thursday, August 7

All plenary sessions will be held in the Regency Ballroom.

### Morning

- 8:00 Registration, *Regency Foyer* (all day)
- 8:30 Welcome: Louise Goss
- Mini-Recital
- Keynote Address: Brian Chung  
*In Search of the Elusive WE*
- 9:30 Teaching Demonstration: *Elementary Private Lesson*  
Bruce Berr with Paul Tisch (age 7)  
Robert A. Duke, moderator
- 10:30 Break
- 11:00 Forums on Piano Pedagogy (See registration packet for room assignments.)  
Topic: *Effective Practice: The Key to Student Motivation*
- Technology Hubs (Sign up at the Registration Desk.)  
Topics are described on page 17.
- Research Poster Presentations, *Regency Foyer*  
Titles and presenters are listed on page 20.
- 11:45 Workshops (See registration packet for workshop assignments.)  
Dr. Alice Brandfonbrener: *Health Maintenance for Pianists*  
NCKP Committee on Teaching Adults: *Accent on Adults: Lucy Tells All!*  
Barbara Fast and Yu-Jane Yang: *Review of New Piano Publications*  
Nehama Patkin: *A Passionate Vision: What I have learned from the Suzuki philosophy*

## Keynote speaker

### Brian Chung

#### *In Search of the Elusive WE*

**Brian Chung** is a pianist who now serves as Senior Vice President of Kawai America Corporation. He is Immediate Past President of the Piano Manufacturers Association International and former Chair of the Board of Trustees for the MTNA Foundation. With a diverse career that includes experience as a performer, educator, and music industry executive, Mr. Chung is devoted to the cause of advancing music participation across America.





**Afternoon**

- 12:45 Lunch Break
- 2:15 Mini-Recital
- 2:30 Teaching Demonstration: *Collegiate Group Instruction*  
 Martha Hilley with a beginning class of music majors  
 Robert A. Duke, moderator
- 3:30 Break
- 4:00 Forums on Piano Pedagogy (*See registration packet for room assignments.*)  
 Topic: *Effective Practice: The Key to Student Motivation*  
 Technology Hubs (*Sign up at the Registration Desk.*)  
 Topics are described on page 17.  
 Research Poster Presentations, *Regency Foyer*  
 Titles and presenters are listed on page 20.
- 4:45 Workshops (*See registration packet for workshop assignments.*)

**Evening**

- 5:45 Dinner Break
- 8:00 MTNA 2003 Winners' Recital, *Regency Ballroom*  
 Gary Ingle, MTNA Executive Director, presiding  
 Alexander Lue, Baldwin Junior High School Winner  
 Sergiy Komirenko, Yamaha Senior High School Winner  
 Stephen Beus, Steinway & Sons Collegiate Artist Winner
- 9:15 Reception, *Regency Foyer*

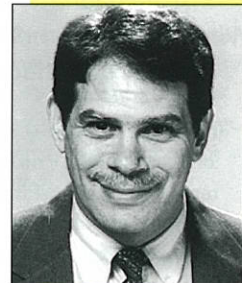
**Teaching demonstrations**



Martha Hilley

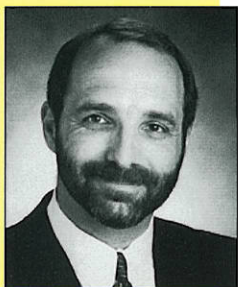
**Martha Hilley** joined the faculty of The University of Texas at Austin School of Music in 1982 and has served as Chair of the Keyboard Division and Director of Undergraduate Studies. She has taught for International Workshops in Italy, Belgium, Hawaii, Australia, and Norway as well as for the Fairbanks Summer Arts Festival in Alaska and the Summer Keyboard Institute at Tunghai University in Taichung, Taiwan.

**Bruce Berr** is a nationally recognized independent and college teacher of piano and pedagogy. He is an associate editor and webmaster for *Keyboard Companion* magazine, and has numerous educational piano compositions in print. He has presented teacher clinics and master classes across the country.



Bruce Berr

## Evaluating effective teaching



Robert A. Duke

**Robert A. Duke** is the Marlene and Morton Meyerson Centennial Professor of Music and Human Learning, University Distinguished Teaching Professor, and Director of the Center for Music Learning at The University of Texas at Austin. Dr. Duke serves on the editorial boards of the *Journal of Research in Music Education*, the *Bulletin of the Council for Research in Music Education*, and *Psychomusicology*.

*Lessons that inspire.  
Lessons that last.  
Every student can make music  
with confidence, artistry, and joy.  
Through exceptional teaching,  
no matter what the  
student's age or aptitude,  
ordinary performance  
can become  
extraordinary experience.*

## Workshops



### Health Maintenance for Pianists

**Dr. Alice Brandfonbrener**, Editor of the journal *Medical Problems of Performing Artists*, is an Assistant Professor of Medicine and also of Physical Medicine and Rehabilitation at the Feinberg School of Medicine of Northwestern

University in Chicago. She is the founder and director of the Medical Program for Performing Artists at the Rehabilitation Institute of Chicago, and was the founder of the Aspen Symposium on the Medical Problems of Musicians and Dancers.

### A Passionate Vision: What I have learned from the Suzuki philosophy

**Nehama Patkin** is regarded as one of Australia's most versatile musicians. She performs both as soloist and chamber musician, composes for the Australian Ballet, and is a presenter in radio and TV broadcasts. Her awards include the Order of Australia Medal, the Churchill Fellowship, and one of Australia's Women Achievers of the Year. Patkin is Director of Suzuki Piano Teacher Training in Victoria.



### Review of New Piano Publications

**Barbara Fast**, Associate Professor of Piano Pedagogy, coordinates the group piano program and teaches graduate and undergraduate piano pedagogy at the University of Oklahoma. She frequently presents workshops on new materials, historical keyboard pedagogy, and technology.



**Yu-Jane Yang** is Associate Professor of Piano/Piano Pedagogy and Director of the Piano Preparatory Program at Weber State University (UT). She received her Ph.D. degree from the University of

Michigan in Ann Arbor. She currently serves as State President of the Utah Music Teachers Association.

### Accent on Adults: Lucy Tells All!

**NCKP Committee on Teaching Adults**  
Michelle Conda, Chair  
Victoria Johnson  
Janet Buswell-Finch  
Pamela Pike  
Ramona Kime Graessle  
Yu-Jane Yang



**Michelle Conda** is the Coordinator of Secondary Piano and Associate Professor of Piano Pedagogy at the Cincinnati College-Conservatory of Music. She is one of the founding members of the National Group Piano/Piano Pedagogy Forum.

# Technology Hubs

Four Technology Hubs provide conference-goers with opportunities to learn from experts in various fields of technology as it relates to the teaching studio.

The Technology Hubs will be open daily from 11:00-12:30 and from 4:00-5:30.

## Long Distance Learning Hub *Cermak Room*

Hub Guru: George Litterst

### Morning Session

11:00-11:45 *The Distance to Your Student is Shorter than You Think!*

Are there compelling reasons to try long-distance teaching?

Experience a long-distance lesson for yourself. Investigate

practical real-time and non real-time applications of the Internet.

11:45-12:30 *Long Distance Learning Open House*

### Afternoon Session

4:00-4:45 *Reaching a Global Audience: Putting Your Recitals Online*

Broaden the audience for your student recitals. Help your students share their work with friends and relatives across the country and around the globe.

4:45-5:30 *Roundtable Discussion: How Do I (or Did I) Begin to Extend My Teaching Beyond My Studio?*

## 21st Century Studio Hub *Camden Room*

Hub Guru: Michelle Gordon

### Morning Session

11:00-11:45 *How to Put Together a Modern Keyboard Studio*

This session is designed for the teacher who is new to Technology.

We will discuss the equipment necessary to begin using technology in private lessons, and how to assemble a modern keyboard studio.

11:45-12:30 *21st Century Studio Open House*

### Afternoon Session

4:00-4:45 *Exactly What Do You Do in a Modern Keyboard Studio?*

Join this discussion of educational software and its uses; making use of a midi-disk player and creating an on-line recital.

4:45-5:30 *Roundtable Discussion: Technology Issues for the Private Teacher*

The "Hub Guru" of each of the four Hubs will make a morning presentation (11:00-11:45), followed by an interactive discussion (11:45-12:30). A second topic will be presented in the afternoon at 4:00-4:45, followed by discussion at 4:45-5:30.

The schedule will be repeated on Friday and Saturday.

## Keyboard Class/Ensemble Hub *Ogden Room*

Hub Guru: Kathy Maskell

### Morning Session

11:00-11:45 *Fun and Instructive Literature for Keyboard Ensembles*

Join this reading session of ensembles by today's top composers and arrangers. Learn to create ensembles from students' favorite repertoire.

11:45-12:30 *Keyboard Class/Ensemble Open House*

### Afternoon Session

4:00-4:45 *Using Modern Keyboards Artistically*

Whether you have a uniform piano lab or a motley collection of keyboards, come explore creative performance techniques.

4:45-5:30 *Roundtable Discussion: How to Build an Effective and Fun Ensemble Program*

## Creativity Hub *Windsor Room*

Hub Guru: Paul Sheftel

### Morning Session

11:00-11:45 *MIDI Motivation*

The sequencer as a playback tool is a powerful device for helping students develop many musicianship skills. The sequencer is equally powerful as a recording tool. Uses of the sequencer will be explored and discussed.

11:45-12:30 *Creativity Open House*

### Afternoon Session

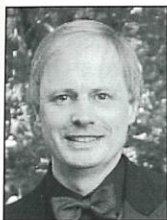
4:00-4:45 *Composing at the Lesson*

Incorporating creative activities into a busy lesson is challenging. Technology can provide exciting, colorful, and inspiring solutions. Several computer programs will be utilized for demonstration in this session.

4:45-5:30 *Roundtable Discussion: Teacher-to-Teacher Creativity Exchange*

Thursday

## NCKP Committee on Technology



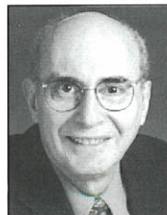
**George Litterst** (Committee Chair) is a nationally-known music educator, clinician, author, performer, and music software developer. He works extensively with the high-tech Disklavier piano and is co-author of the intelligent accompaniment software program, Home Concert 2000 ([www.timewarptech.com](http://www.timewarptech.com)).



**Kathy Maskell**, currently Massachusetts MTA State President, is the founding director of MusicWorks, Inc., a music education facility with an enrollment of 400 students. Kathy is adjunct professor of class piano at Regis College in Weston, MA, and serves as music director at Eliot Presbyterian Church, Lowell, MA.



**Michelle Gordon**, immediate past-president of the Massachusetts MTA, is a private piano instructor, a church musician, choral accompanist, and licensed Kindermusik educator. She has written for *Keyboard Companion* magazine and presented a session at the Technology Symposium of the 2003 MTNA national convention.



**Paul Sheftel's** materials published by Alfred and Carl Fischer are used throughout the country. His MIDI orchestrations include the complete *Bastien Piano Method* and Carl Fischer's *Music Pathways*. Currently he teaches pedagogy at the Juilliard School as well as maintaining a private studio in New York City.

## Forums on Piano Pedagogy

### Topic: Effective Practice: The Key to Student Motivation

The most motivating aspect of a student's study is the sense of growth and improvement. This happens only through regular, efficient practice. But do our students maximize their time at the piano? In this forum you will share ways to create efficient practice by your students.

#### Forum Discussion Leaders



**Karen Austin**, a private teacher in Dallas, TX, is a graduate of Texas Christian University. She is a trustee for Texas MTA and a past president of Dallas MTA.



**Nancy Bachus** has taught both applied piano and academic subjects at the college level for more than 25 years, and has presented to numerous piano teachers' organizations. She is a clinician for Alfred Publishing and the author of the *Spirit* series, intermediate level piano anthologies that integrate history and art.



**Martha Baker-Jordan** has recently authored *Practical Piano Pedagogy*, a highly acclaimed 450-page text published by Warner Bros. For 28 years, she has been Professor of Piano Pedagogy at California State University, Fullerton, where she developed a comprehensive piano pedagogy program and received numerous awards for teaching excellence.



**Gail Berenson**, Vice President of MTNA, is Professor of Piano and Chair of the Keyboard Division at Ohio University, Athens, where she was awarded the *Distinguished Teacher of the Year* Award for 2000. An active performer as well as a noted expert on musician wellness issues, she is co-author of *A Symposium for Pianists and Teachers: Strategies to Develop Mind and Body for Optimal Performance*.



**Karin Redekopp Edwards**, Professor of Piano at Wheaton College (IL), performs frequently in Canada and the U.S. as guest artist with orchestra, in solo recital, as collaborative artist, and as a member of the duo piano team, Redekopp and Edwards. Active as a workshop clinician and professor of piano pedagogy, Dr. Edwards has served as 1st Vice President and Convention Chair of ISMTA.

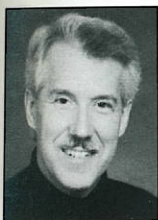


**Ann Milliman Gipson** is Associate Professor of Piano Pedagogy at Baylor University. She has held faculty positions at Oklahoma Baptist University, Delta State University, and the University of Kentucky, and currently serves as the 2004-2005 MTNA National Conference Program Chair.

## Forum Discussion Leaders



**Suzanne Guy**, a regular *Clavier* columnist, is an MTNA certified master teacher of piano. She has authored 15 books, including the popular series *Expressive Etudes* and *Focus on Melody* (co-authored with Victoria McArthur) published by FJH. Her workshops have taken her to 44 states and overseas.



**William Hughes** has been a member of the Indiana State University faculty since 1967. He holds the DMA degree from the Eastman School of Music, and has degrees from Muskingum College and the University of Illinois. His teachers have included Barry Snyder, Clair Richards, Howard Karp, and Malcolm Bilson.



**Fred Kern** is Professor of Music at the University of North Texas where he is Coordinator of Keyboard Skills and Music Fundamentals. He has graduate degrees in piano performance, pedagogy, and music education, and is a nominee for the 2004 Robert Foster Cherry Award for Great Teaching.



**Helen Marlais** has performed throughout much of the U.S. and Europe, as well as in China, Canada, and the former Soviet Union. She is Associate Professor of Music at Grand Valley State University (MI) where she teaches piano pedagogy, studio piano, and oversees the keyboard musicianship program for music majors.



**Naomi Oliphant**, Associate Dean of the University of Louisville School of Music, was honored with the university's *Distinguished Teaching Award* in 1994. She has an international reputation as a soloist and chamber musician and is author of pedagogical articles appearing in major publications.



**Elvina Pearce** studied piano with Isabelle Vengerova and pedagogy with Frances Clark. She has presented recitals and workshops in over 40 states plus Canada, the Republic of China, and Australia. One of the founders of The Frances Clark Center for Keyboard Pedagogy, she serves as Vice President of its Board of Trustees and as Editor for *Keyboard Companion* magazine.



**Scott Price** currently serves as Associate Professor of Piano, Piano Pedagogy, and Coordinator of Group Piano at the University of South Carolina School of Music. He is creator and co-editor of the on-line *Piano Pedagogy Forum*. His work with autistic and disabled children was featured in a session at the 2002 MTNA national convention.



**Anita Renfroe** is Artist-Professor of Piano and Director of Keyboard Studies at Millersville University of Pennsylvania. She has received grants for research on topics including Baroque Ornamentation, Mendelssohn in England, and Student Preparation Behaviors. Dr. Renfroe performs solo and chamber recitals in the U.S. and abroad each year.



**Kenneth Williams** directs the graduate programs in piano pedagogy and coordinates the class piano program at The Ohio State University in Columbus. He received the 2002 *Article of the Year Award* from MTNA for his article "Cross-Cultural Communication in the Music Studio." He has presented papers for the European Piano Teachers in Hungary and the International Society for Music Education in Norway.

Thursday

## Poster Sessions

11:00 and 4:00, Thursday and Friday  
Regency lobby

### *The Effect of Area of Specialization of Class Piano Instructors on the Emphasis in Teaching Functional Skills*



**Huei Li Chin, Southern Illinois University**

Huei Li Chin is an Assistant Professor of Music and the Director of the Keyboard Development Program at Southern Illinois University Edwardsville. She holds a BM and MM in Piano Performance from West Virginia University and a Ph.D. in Music Education from The Ohio State University.

### *A Survey of Undergraduate Piano Pedagogy Core Course Content*



**Victoria Johnson, Louisiana State University**

Victoria Johnson is Assistant Professor/Coordinator of Piano Pedagogy at Louisiana State University. She holds degrees from the University of Oklahoma, Bowling Green State University, and Luther College. Her articles have appeared in *Keyboard Companion*, *Alfred's Piano Rendezvous*, and *Piano Pedagogy Forum*.

### *Edwin Gordon's Skill-Learning Sequence Applied to the Pedagogy of Preschool Piano Methods*

**Rebecca Grausam  
University of South Carolina**

**Deanna Moore  
University of South Carolina**

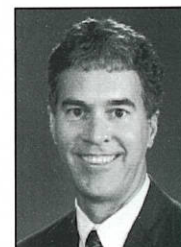


Rebecca V. Grausam (top) is a DMA candidate in Piano Pedagogy at the University of South Carolina where she studies pedagogy with Scott Price and piano with Marina Lomazov. She received an MM degree in Piano Pedagogy from Butler University and BM degrees in Piano Performance and Flute Performance from Western Michigan University.

Deanna Moore is a DMA candidate in piano performance at the University of South Carolina studying with Scott Price. She is on academic leave from Bob Jones University in Greenville, SC where she teaches piano and accompanies.

### *Critical Listening: Beyond Error Detection toward Artistic Teaching*

**Kenneth Williams, Ohio State University  
Huei Li Chin, Southern Illinois University**



Kenneth Williams directs the graduate programs in piano pedagogy and coordinates the class piano program at The Ohio State University in Columbus. He received the 2002 *Article of the Year Award* from MTNA for his article "Cross-Cultural Communication in the Music Studio." He has presented papers for the European Piano Teachers in Hungary and the International Society for Music Education in Norway.

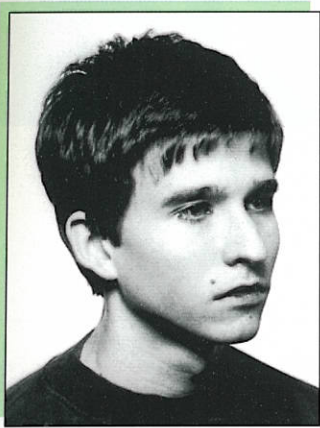
## Royal American Conservatory Examinations

1:45, Thursday, Friday, Saturday Hunt Room

You are invited to attend an information session on the new Royal American Conservatory Examinations led by Scott McBride Smith, President. RACE is dedicated to providing American piano students with nationwide opportunities for achievement and evaluation and an internationally recognized program of assessment.

## MTNA Winners' Recital

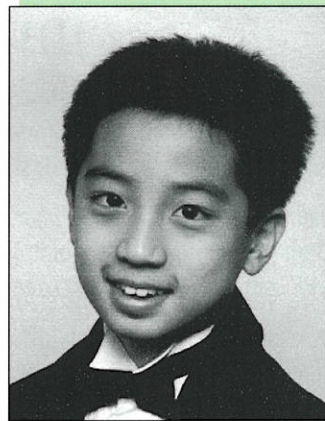
Thursday evening's recital features performances by the national winners of the 2003 MTNA Baldwin Junior High School, Yamaha High School, and Steinway & Sons Collegiate Artist piano competitions. Gary Ingle, MTNA Executive Director, will preside.



### Yamaha Senior High School Winner:

**Sergiy Komirenko** was awarded first prize at the International Steinway-Paris Youth Piano Competition, and a first prize and a special prize at the Bartók-Kabalevsky-Prokofiev International Piano Competition. Sergiy has performed in numerous

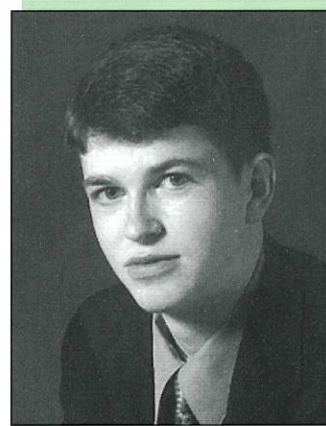
concerts and recitals in Europe and the United States. He won state and divisional MTNA competitions while living in Raleigh, NC and studying with John Ruggiero. He now resides in California and is the student of Namiq Sultanov.



### Baldwin Junior High School Winner:

Twelve year-old **Alexander Lue** has been a student of Sam Wong of Plano, TX since the age of two. He was awarded the

Texas Commission on the Arts 2002 Young Masters Scholarship and performed at the 2003 Texas Medal of Arts Awards ceremony for the recipients, patrons, Governor Rick Perry, and the Texas State Legislature. In November 1999, he performed Mozart's *Piano Concerto, K. 414* with the Orquesta Filarmónica de la Universidad de Lima and gave a solo recital including works by Handel, Grieg, Schubert, and Bartók at the Fourth Béla Bartók International Piano Festival in Lima, Peru.



### Steinway & Sons Collegiate Artist Winner:

**Stephen Beus** is a student at Whitman College, where he studies with Leonard Richter. He won first place in the Junior Gina Bachauer International Piano Competition, the Corpus Christi International Young Artists Concerto Competition, and the Whitman College Concerto/Aria Competition. Stephen was

the 2000 MTNA Yamaha High School Piano Competition winner. He performed a solo recital at Benaroya Recital Hall (Seattle) and has appeared with several orchestras.

# Notes



# DAVID KRAEHENBUEHL (1923 - 1997)



## THE DAVID KRAEHENBUEHL SOCIETY IS ALIVE AND WELL!

We are actively promoting Kraehenbuehl's musical and theoretical legacy with recitals, lecture presentations, recordings, and concerts. Our Newsletters are full of information and are available to members (and to others on request).

Please note that ALL of David's personal copies of music and other materials are now archived in the Irving S. Gilmore Music Library at Yale University as THE DAVID KRAEHENBUEHL PAPERS. An index is available from the library and online.

The Society is now researching Kraehenbuehl's piano teaching compositions and other pedagogical writings. We listed many newly available works in our Spring 2003 Newsletter and will continue to update on the website.

### PLEASE NOTE THESE IMPORTANT ADDRESSES:

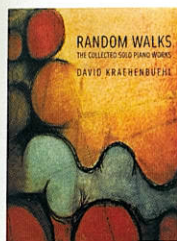
The Society: [www.davidkraehenbuehlsociety.org](http://www.davidkraehenbuehlsociety.org)

The Yale Papers:

<http://webtextlibrary.yale.edu/XML2html/music.kraehenbuehl.nav.html>

Our Artistic Director: [Martha@marthabraden.com](mailto:Martha@marthabraden.com)

Please consider becoming a member of the David Kraehenbuehl Society!  
Regular \$35, Student \$15, Sustaining \$100, Patron \$500 and above

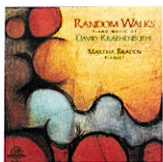


### DAVID KRAEHENBUEHL RANDOM WALKS: The Collected Works for Solo Piano\*

Sheet music, 130 pp. Six works, intermediate-advanced. Braden edition, revised 2000. Program notes by the composer. Reviewed: *American Music Teacher*, Aug/Sept 2000; *Clavier*, September 2000 \$54.00

1. Diptych (1951)
2. Five Toccatas for Keyboard (1955)
3. A Formal Triad (Kaleidoscope) (1958)
4. Toccata sopra B-A-C-H (1985)
5. Random Walks (1962-1966)
6. Looking Back (1954)

The six works also published individually @ \$15.00 each



### RANDOM WALKS: The CD

Martha Braden, pianist. New World Records #80584. 2002.  
The CD tracks correlate with "The Collected Works" offered above.  
\$16.99

"...this splendid release cements [Kraehenbuehl's] reputation as a distinguished American composer."  
—*Fanfare* (Nov/Dec 2000)

"The piano pieces on this program reflect the composer's personality—they too are likable, energetic, and wide-ranging..."  
—*American Record Guide* (Sept/Oct 2000)



**DAVID KRAEHENBUEHL, American Composer:**  
**Curriculum Vitae/Catalog and Biography**, 3rd Ed., 55 pp.,  
includes New Catalog of Solo and Ensemble Piano Works.  
by Martha Braden and Nancy Connors. \$18.00.

**TO ORDER ONLINE:** [www.marthabraden.com](http://www.marthabraden.com)  
For further information or to order with check, please contact: [martha@marthabraden.com](mailto:martha@marthabraden.com)  
(212) 678-0558



### See Martha Braden at this conference

"... [Braden's] advocacy of the music is enhanced by her nimble virtuosity, headlong commitment, and vivid sense for the intrinsic drama of the music.

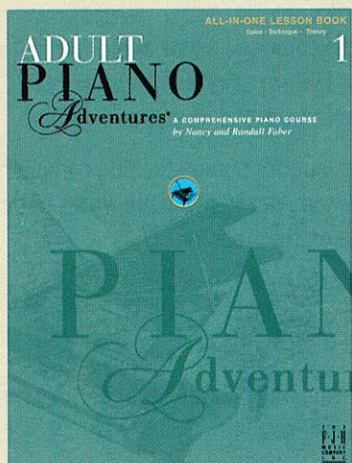
—*Fanfare* (Nov/Dec 2000)

"...Martha Braden...has done admirable work as performer, editor, and publisher in rescuing Kraehenbuehl's piano oeuvre."

—*American Record Guide* (Sept/Oct 2000)

# ADULT PIANO ADVENTURES®

by Nancy and Randall Faber



FF1302 Book 1  
FF1302CD Book & CDs  
CD1025 CD Accompaniments  
GM1028 General MIDI Disk

## “All-In-One” Lesson Books Solos • Technique • Theory

Are your adult piano students drawn to the sounds of a popular ballad? A Scott Joplin piano rag? The keyboard style of Mozart and Beethoven? **Adult Piano Adventures® Books 1 and 2** enable the adult beginner to play music for pleasure while developing musical understanding.

**Book One** presents the fundamentals of music notation, chord playing, and musical form—all through engaging music chosen specifically for the adult. In fact, within these pages await musical gems such as: *Over the Rainbow*; *Fiddler on the Roof*; *Amazing Grace*; *Don't Cry for Me, Argentina*; and *Lean On Me*.

**Book Two** teaches keyboard harmony using lead sheets with chord accompaniment patterns. Repertoire of this volume includes: *I Will Always Love You*; *Send in the Clowns*; *The James Bond Theme*; Mozart's *Eine Kleine Nachtmusik*; Puccini's *Musetta's Song*; and more.

Each unit includes a “**3-Minute Technique**” page to develop finger dexterity and a “**Music Theory**” page to develop understanding of rhythm and harmony.

You will find the instructional approach clear and concise, the pacing refreshingly smooth, and the choice of repertoire outstanding. Just what you'd expect of *Piano Adventures®*.



FF1334 Book 2  
CD1031 CD Accompaniments (2CDs)  
GM1039 General MIDI Disk

T H E  
F · J · H  
MUSIC  
COMPANY  
I N C.

For a detailed listing of FJH publications, write or call the publisher.

**The FJH Music Company Inc.** 2525 Davie Road, Suite 360, Fort Lauderdale, Florida 33317  
PHONE 954-382-6061 • 1-800-262-8744 FAX 954-382-3073 WEBSITE fjhmusic.com



**PIANO ADVENTURES® ...SETTING THE STANDARD FOR THE 21ST CENTURY**

## How to preserve the investment value of your piano while keeping the tuning on pitch:

One of the most notable piano success stories is that of Ori Bukai and his company, Allegro Pianos. Within less than a decade, Allegro grew from a tuner sideline business to become Connecticut's foremost high-end piano retailer, a highly-respected piano remanufacturer, and one of the top Estonia and Mason & Hamlin dealerships in the country.

Ori was introduced to the Piano Life Saver System from Dampp-Chaser in the early 1990s and quickly became a strong advocate of the System, "Our factory restores over 100 classic pianos a year and, since I service most of these wonderful instruments, I insist that a Piano Life Saver be installed in each one of them. As a result, warranty calls are at an absolute minimum, the pianos don't require pitch corrections, and they always sound beautiful."

To receive a product brochure containing endorsements from all major piano manufacturers, please call toll-free (800) 438-1524 or email: [piano@dampp-chaser.com](mailto:piano@dampp-chaser.com) or visit our website: [www.dampp-chaser.com](http://www.dampp-chaser.com)

*Piano*

**LIFE SAVER SYSTEM**

from  
**DAMPP-CHASER**



*"It is critical that piano owners realize the role that stable humidity plays in the piano's well-being and in the preservation of its investment value. Part of a good maintenance plan includes the installation of the Piano Life Saver System."*

—Ori Bukai

Piano Technician  
Piano Restorer and Retailer

Allegro Pianos  
Stamford, Connecticut



Photo: Chris DaGrosa

# Friday: Conference Day Two

## Conference Day Two Friday, August 8

All plenary sessions will be held in the Regency Ballroom.

### Morning

- 8:00 Registration, *Regency Foyer* (all day)
- 8:30 Mini-Recital
- 8:45 Keynote Address: Marilyn Neeley  
*Music and Life: An Ongoing Partnership*
- 9:30 Teaching Demonstration: *Intermediate Repertoire Class*  
Sam Holland with Chicago area students  
Robert A. Duke, moderator
- 10:30 Break
- 11:00 Forums on Piano Pedagogy (See registration packet for room assignments.)  
Topic: *Remedial Reading for the Transfer Piano Student*  
Technology Hubs (Sign up at the Registration Desk.)  
Topics are described on page 17.
- Research Poster Presentations, *Regency Foyer*  
Titles and presenters are listed on page 20.
- 11:45 Workshops (See registration packet for workshop assignments.)  
Dr. Fritz Mengert: *Music and the Brain: Two Hemispheres + Two Hands = Harmony*  
NCKP Committee on Research: *Systematic Observation of Students' Practice*  
Martha Braden: *The Piano Works of David Kraehenbuehl*  
NCKP Committee on Music in Early Childhood: *The Well-Prepared Beginner*

Friday

## Keynote speaker



### Marilyn Neeley

#### *Music and Life: An Ongoing Partnership*

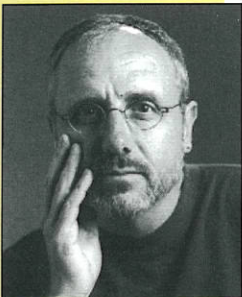
Marilyn Neeley has been a lifelong musician, beginning with a New York debut recital at age eight. A prizewinner in the Van Cliburn, Leventritt, and Geneva International Competitions, she has been soloist with over 100 orchestras and has concertized throughout the U.S., in Russia, Europe, Mexico, and Latin America. She studied with Ethel Leginska and Muriel Kerr in Los Angeles and is Professor of Music at The Catholic University of America.

**Afternoon**

- 12:45 Lunch Break
- 2:15 Mini-Recital
- 2:30 Teaching Demonstration: *High School Private Lesson*  
Scott McBride Smith with Jeremy Siskind (age 16)  
Robert A. Duke, moderator
- 3:30 Break
- 4:00 Forums on Piano Pedagogy (See registration packet for room assignments.)  
Topic: *Remedial Reading for the Transfer Piano Student*  
Technology Hubs (Sign up at the Registration Desk.)  
Topics are described on page 17.  
Research Poster Presentations, *Regency Foyer*  
Titles and presenters are listed on page 20.
- 4:45 Workshops (See registration packet for workshop assignments.)

**Evening**

- 5:45 Dinner Break
- 8:00 Recital by Conference Artist, Abbey Simon
- 9:30 Reception

**Teaching demonstrations**

Sam Holland

**Sam Holland** is Head of Keyboard Studies at Southern Methodist University. He has pioneered new technology in music education, co-authored *The Music Tree* (Warner Bros., 2000), and has presented lectures and recitals on three continents.

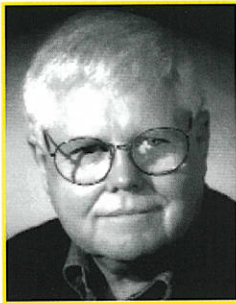
**Scott McBride Smith** is an independent teacher of prize-winning students in Irvine, CA, President and CEO of the *International Institute for Young Musicians*, and co-author of the piano pedagogy text *The Well-Tempered Keyboard Teacher*.



Scott McBride Smith

## Workshops

### **Music and the Brain: Two Hemispheres + Two Hands = Harmony**



**Fritz Mengert** is a specialist in Phenomenological and Neurophenomenological Epistemology. An Emeritus Professor at the University of North Carolina at Greensboro, he holds degrees from The Ohio State University, Columbia University, and Kent State University. Dr. Mengert has been teaching neuro-cognitive protocols for twenty years and consults with educators, assisting them in the development of applied programs and organizational skills.

### **What's going on in there? Systematic observations of students' practice**



#### **NCKP Committee on Research**

Mary Tollefson, Chair  
Cynthia Benson      Scott Donald  
Scott Price          Mary Ann Ybarra

**Mary Tollefson** is Associate Professor of Piano at the University of Wisconsin-La Crosse where she teaches piano, group piano, and piano pedagogy. She has had articles published in *Keyboard Companion*, *Piano Pedagogy Forum*, and *American Music Teacher*. She currently serves Wisconsin's state MTNA association as newsletter editor.

Friday

### **The Piano Works of David Kraehenbuehl: For the Student, For the Professional**



In her educational endeavors, **Martha Braden** follows in the tradition of her early teacher, Frances Clark. Subsequently she coached with David Kraehenbuehl, Ming Tcherepnin, and Madeline Bruser. She has recorded for the SONY, CRI, and New World labels.

### **The Well-Prepared Beginner: Prepared in Mind, Body, Spirit and Family**



#### **NCKP Committee on Early Childhood**

Lorna Heyge, Chair      Diane Smith  
Chris Azzarra          Janelle Whitby  
LeAnn Kirkham        Sarah Williams

**Lorna Lutz Heyge** is President of the Foundation for Music-Based Learning, publisher of *Early Childhood Connections*, and an author and teacher-educator in the field of early childhood music.

sf

# Forums on Piano Pedagogy

## Topic: Remedial Reading for the Transfer Piano Student

All of us teach transfer students, whether we are collegiate or independent teachers. We formulate a "reconstruction curriculum" which frequently includes a strategy for improving the student's reading skill. What activities, programs, projects, and materials have you used to improve your students' reading?

### Forum Discussion Leaders



**Cathy Albergo** is co-author of the new instructional series *Celebrate Piano!*, *Intermediate Repertoire Guide*, and *Celebration Series: Handbook for Teachers* (Frederick Harris). A past president of the Illinois state MTA and MTNA National Certification Chair, she is Professor of Music and has served as Chair of the Music Department at William Rainey Harper College.



**Jean Barr** is Professor of Piano Accompanying and Chamber Music at the Eastman School of Music. She has appeared in concert and master classes in Asia, Australia, Europe, the former Soviet Union, and throughout North America. In 1994, the Eastman School honored her with the prestigious Eisenhart Award for Excellence in Teaching.



**Steve Betts** is Associate Professor of Music at Southern Nazarene University. He is a member of the MTNA Pedagogy Saturday Committee and served as the Executive Director of the 2001 National Conference on Keyboard Pedagogy.



**Sylvia Coats**, faculty member at Wichita State University, performs with the *Sotto Voce Trio*, has served as MTNA West Central Division President, and is on the MTNA Board of Directors. She is writing a book on piano pedagogy.



**Annette Conklin** maintained a large independent piano studio in South Bend, IN for 35 years and was an adjunct faculty member at Saint Mary's College for 23 years prior to her recent move to St. Paul, MN. Annette was president of the IMTA, was named 1997 *Teacher of the Year*, and was honored as an MTNA Foundation Fellow in 2002. She served on the MTNA Board and has been Chair of the Board of Trustees of the MTNA Foundation.



**Ted Cooper** is a piano teacher and composer of educational music. He is a recipient of the *Group Piano Teacher Award* presented by MTNA and the National Piano Foundation. His teaching was featured at the last NCKP. His most recent compositions for piano, *Carnival* and *Solo Adventure!*, are published by Carl Fischer.



**Rebecca Corley** is the owner of Dallas/Music, a music school with seventeen teachers and approximately 900 students. She earned degrees in Piano Performance and Pedagogy from Southern Methodist University, studying with Alexander Uninsky, David Karp, and Louise Bianchi.



**Carol Gingerich** is Assistant Professor of Piano/Piano Pedagogy at the State University of West Georgia. She is a graduate of Columbia University, Westminster Choir College, and the University of Western Ontario. She frequently gives lecture-recitals on French piano style and presents pedagogy workshops.



**Karen Koch** maintains a private studio and is coordinator of the Music Educators' Marketplace for independently-created teaching materials. She holds a BA in Modern Languages from Knox College, and an MA in Piano Performance and Pedagogy from Webster University, St. Louis.

## Forum Discussion Leaders



**Midori Koga** currently serves as Assistant Professor of Piano and Piano Pedagogy at Michigan State University. Active as clinician, adjudicator, and performer, Koga has appeared as presenter at the World Pedagogy Conference, national conferences of the MTNA, and performed in Austria, England, and Spain as well as throughout the U.S. and Canada.



**Barbara English Maris**, pianist, teacher, author, serves as a member of the Board of the Frances Clark Center for Keyboard Pedagogy. Before retiring recently from The Catholic University of American (Washington, DC), she coordinated CUA's graduate degree programs in piano pedagogy and worked with students from six continents. She is author of *Making Music at the Piano* (Oxford University Press).



**Karen Ann Krieger** is an Assistant Professor of Piano and Piano Pedagogy at Vanderbilt University's Blair School of Music in Nashville, TN. She has toured extensively in the U.S. and Europe as a clinician, performer, and composer.



**Rebecca Shockley** is Professor of Piano Pedagogy and Class Piano Coordinator at the University of Minnesota. The author of *Mapping Music* (A-R Editions 1997), she has given workshops for teachers throughout the U.S. and in England, Canada, Taiwan, China, and Korea.



**Phyllis Lehrer** is known internationally as a performer, teacher, clinician, and author. She is Professor of Piano at Westminster Choir College of Rider University in Princeton, NJ.

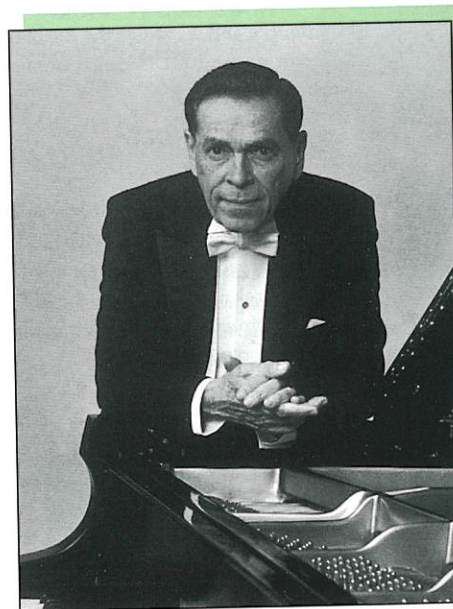


**Connie Arrau Sturm** coordinates piano pedagogy programs at West Virginia University. The author/clinician of over seventy publications/presentations, Sturm won MTNA's *Article of the Year* award and served as national student chapters chair. She is currently researching women's contributions to piano pedagogy.

## Evening recital

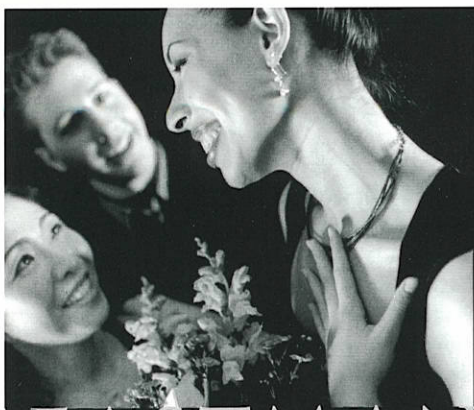
### Abbey Simon, Conference Artist

Abbey Simon counts among the great pianists of the 20th century. He has recorded all of the Rachmaninoff concerti, the complete works of Ravel, and twenty disks of Chopin. At the age of eight, Josef Hofmann accepted him as a scholarship student at the Curtis Institute of Music. After winning the Naumburg Award and performing in Carnegie Hall, he toured in Europe for twelve years before returning to the States. West coast critic Scott MacClelland writes: "When they have written the final chapter on great pianists of the 20th century, the name Abbey Simon will be included. Indeed, that name might well mark the first chapter of 21st-century pianists as well."





# Notes



# EASTMAN

ARTISTRY SCHOLARSHIP LEADERSHIP

## FACULTY

### PIANO

Douglas Humpherys,  
co-chair  
Barry Snyder,  
co-chair

Natalya Antonova  
Jean Barr  
Tony Caramia  
Fernando Laïres  
Vincent Lenti  
Rebecca Penneys  
Thomas Schumacher  
Nelita True

### FORTEPIANO

Malcolm Bilson

### ORGAN

David Higgs,  
chair

Hans Davidsson  
William Porter

### HARPSICHORD

William Porter

## DEGREES OFFERED

**Bachelor of Music**  
in Piano Performance

**Master of Music**  
in Piano Performance and Literature

**Doctorate of Musical Arts**  
in Piano Performance and Literature

**Master of Music**  
in Piano Accompanying and Chamber Music

**Doctorate of Musical Arts**  
in Piano Accompanying and Chamber Music

*Eastman recognizes and promotes the highest standards of artistic achievement among pre-collegiate pianists through sponsorship of the Eastman Summer Piano Festival and Young Artists International Piano Competition.*

*Pianists at Eastman participate in a wide variety of performance venues each year. Opportunities for concerto performances include four annual piano concerto competitions associated with the Eastman School Symphony Orchestra, the Eastman Philharmonia, the Eastman Chamber Orchestra, and the Rochester Philharmonic Orchestra. The combination of visiting guest artists, faculty concerts, departmental and degree recitals, and weekly studio classes provides a daily menu of solo and chamber-music performances for faculty, students, and the general public.*

**Eastman School of Music**  
800 388 9695 or 585 274 1060  
admissions@esm.rochester.edu  
[www.rochester.edu/Eastman](http://www.rochester.edu/Eastman)

*Application deadline  
December 1*

*The Frances Clark Center for Keyboard Pedagogy is proud to announce the reissue of a video about "America's first lady of piano pedagogy."*

## Conversations with Frances Clark --- Her Life and Teachings



In this full color video, Frances Clark provides an uplifting message that will inspire every piano teacher. See footage of an interview with Frances Clark, teaching demonstrations, and an inside glimpse of the New School for Music Study.

*"The story of Frances Clark is the story of modern piano teaching ... There is probably no other single person in the world ... who has had more influence on how piano students are taught than Frances Clark."*

*Richard Chronister*

**\$19.99 + \$3.00 shipping and handling**

*For ordering information contact*

The Frances Clark Center for Keyboard Pedagogy  
Phone: (609) 921-0371 Email: [fccenter@earthlink.net](mailto:fccenter@earthlink.net)  
P.O. Box 651 Kingston, NJ 08528

## California State University, Fullerton DEPARTMENT OF MUSIC

*offering*

### Piano • Piano Pedagogy • Organ



Master of Music, Performance  
Master of Arts, Piano Pedagogy  
Bachelor of Music, Performance  
Bachelor of Arts, Piano Pedagogy

*Concentrations also available in accompanying, composition, music education, music history & theory, and liberal arts.*

#### **Keyboard Faculty**

Dennis Alexander  
Dr. Martha Baker-Jordan  
Eduardo Delgado  
Alison Edwards  
Esther Jones  
Serge Martinchuk  
Teri Watson  
Dr. Robert Watson

*for additional information:*  
Dr. Robert Watson  
CSUF  
Department of Music  
PO Box 6850  
Fullerton, CA 92834-6850  
(714) 278-2575  
[rwatson@fullerton.edu](mailto:rwatson@fullerton.edu)

# Educating Pianists for Today and Tomorrow

## West Chester University School of Music

### Keyboard Faculty:

Robert Bedford

Carl Cranmer

Anita Greenlee, Organ

Terry Klinefelter, Jazz

Robert Pennington

Richard Veleta, Harpsichord

Jacques Voois

### Graduate Degrees:

- Performance
- Piano Pedagogy
- History and Literature
- Theory and Composition
- Music Education

### Undergraduate Degrees:

- Performance
- Music Education
- Theory and Composition

### Scholarships Available

Dr. Timothy Blair, Dean

School of Music

West Chester University

West Chester, PA 19383

610-436-2739

E-mail: [tblair@wcupa.edu](mailto:tblair@wcupa.edu)

[www.wcupa.edu](http://www.wcupa.edu)



*New School of Music and Performing Arts  
Building planned for 2005.*



EXPECT EXCELLENCE

WCU

coming in September 2003

the long-awaited new book  
by pianist/educator

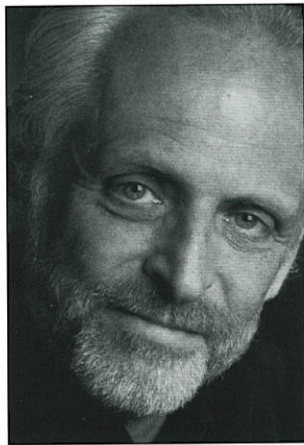
## WILLIAM WESTNEY

(creator of the *Un-Master Class*®)

### *The Perfect Wrong Note*

- Learning to  
Trust Your  
Musical Self

published by  
Amadeus Press



"clearly **the work of a master teacher** who has deep knowledge of his subject and enormous empathy for his students and his readers."

- Betty Edwards, author of  
*Drawing on the Right Side of the Brain*

"the text inspires the soul of the reader ... this is a book for all who seek to live a more vibrant and more awake life. William Westney is a master teacher and he has much to share. This book has the **potential to change lives**. Enjoy the journey!"

- Dee Coulter, Ed.D., faculty, Naropa University

"The book is immensely inspiring, thought provoking, and fascinating. I can't imagine any teacher — or general reader for that matter — not being **transformed in some very meaningful way** after reading this book."

- Paul Sheftel, faculty, Juilliard School of Music

"Through [Westney's] **infectiously enthusiastic writing style**, you will discover an abundance of truths and ideas that will transform your teaching and unleash your creativity in the music studio."

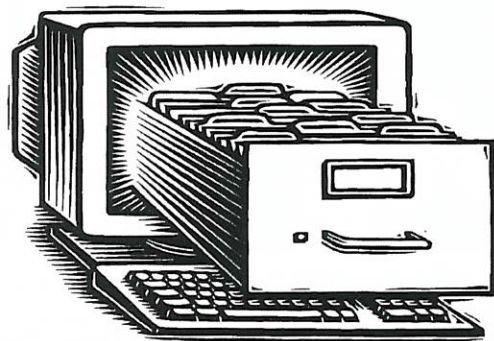
- Gary Ingle, Executive Director,  
Music Teachers National Association

for more information, or to pre-reserve your copy:

[www.amadeuspress.com](http://www.amadeuspress.com)  
[www.williamwestney.com](http://www.williamwestney.com)

## Come and see it!

Great early-level keyboard repertoire.



Visit our Website! [www.myklas.com](http://www.myklas.com)

- \* See what is New!
- \* Incredible Search Capabilities!
- \* Thematic Samples! (*click on the "i" symbol next to the title listing in 'catalog' section*)

Myklas Music Press, 387 Corona St., Denver CO 80218  
(303)778-8003 Email: [info@myklas.com](mailto:info@myklas.com)



# KITS

We at KITS believe that a mastery of music theory is vitally important to music education, and hundreds of subscribers nationwide agree. Our unique annual editions of music theory exams on seven levels are used by independent teachers and associations. And we sponsor the National Music Theory Honor Roll. Send for a curriculum this summer and be ready in the fall to start your students on their way to success.



Since 1985, KITS has promoted music literacy through:

- \*A 7-level curriculum
- \*Student workbooks
- \*Annual exams
- \*National Honor Roll

Learn more at: [www.keynotetheory.com](http://www.keynotetheory.com)

Email: [musictheory@earthlink.net](mailto:musictheory@earthlink.net)

Or write KITS: 9732 Corral Drive  
Potomac MD 20854

Do Your  
Students Experience  
**Pain or  
Tension**

at the Piano?



We invite you to learn more about our **Coordinate Movement Program for Pianists**. This breakthrough program applies sound physiological principles to relieving symptoms and starting toward a complete recovery. You will also discover that efficient, coordinated movement at the piano is profoundly united with artistic expression. This is pedagogy for the 21st century!

**PORTLAND STATE  
UNIVERSITY**

Department of Music • P.O. Box 751 • Portland, Oregon 97207-0751  
503-227-6699 • [www.pianotechnique.org](http://www.pianotechnique.org)

**Teaching Fundamentals of Music Making**

by internationally acclaimed pedagogue

**Dr. Faina Bryanskaya**

"Faina Bryanskaya is a master teacher, equally gifted at working with the youngest novice and with the most advanced instructors. In this Handbook – at once lively and deep – she distills a lifetime of learning and teaching."

Howard Gardner,  
Professor in Cognition and Education  
Harvard Graduate School of Education



Practical guide for piano and music teachers – integrates the best features of European, Russian, and American schools. It covers all the aspects of teaching beginners (ages 5 and up) through the keyboard, including music notation presented in an easy and fun way. Use in conjunction with her books for students *The Key to Music Making*.

To order or for more information call 617-782-6710  
E-mail: [fainabryanskaya@aol.com](mailto:fainabryanskaya@aol.com)  
or visit [www.musicianary.org](http://www.musicianary.org)



The quickest and most  
convenient way to buy piano music.

# PIANO LANE

*\* Need help?*

No problem! Speak to one of our friendly and knowledgeable keyboard specialists.

*\* Need up-to-date information?*

No problem! Visit [www.pianolane.com](http://www.pianolane.com) for all listings of the latest publications from all music publishers. Browse and shop 24/7.

*\* Need music quickly?*

No problem! All in-stock orders will ship within 24 hours directly to your door.

## FREE SHIPPING!

All orders totaling \$100 or more always get  
FREE SHIPPING\* at Piano Lane!

\* UPS Ground

## WWW.PIANOLANE.COM

1-888-268-3437

✉ [info@pianolane.com](mailto:info@pianolane.com)

Don't worry — your satisfaction  
is 100% guaranteed!

# Saturday: Conference Day Three

## Conference Day Three Saturday, August 9

All plenary sessions will be held in the Regency Ballroom.

### Morning

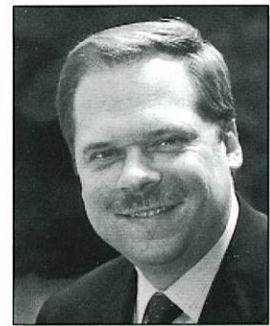
- 8:00 Registration, *Regency Foyer* (all day)
- 8:30 Mini-Recital
- 8:45 Keynote Address: Dr. Robert Stroker  
*The Professional Music Educator*
- 9:30 Teaching Demonstration: *Elementary Group*  
Mary Brostrom Bloom with an elementary group  
Robert A. Duke, moderator
- 10:30 Break
- 11:00 Forums on Piano Pedagogy (*See registration packet for room assignments.*)  
Topic: *Recitals, Contests, and Festivals: Who Wins?*  
Technology Hubs (*Sign up at the Registration Desk.*)  
Topics are described on page 17.
- 11:45 Pedagogical Legacies from the Past  
Abbey Simon: *Josef Hofmann and the Early Curtis Days*  
Norman Pelligrini, interviewer

## Keynote speaker

### Robert T. Stroker

#### The Professional Music Educator

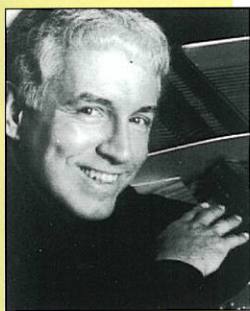
Robert T. Stroker is currently Dean of the Esther Boyer College of Music and Dance and Professor of Music Education at Temple University. Prior to his appointment at Temple University, Dr. Stroker served as Associate Dean, Chair of the Divisions of Music and Dance, Department Head of Music Education, and Director of the Meadows Percussion Ensemble for the Meadows School of the Arts at Southern Methodist University.



## Afternoon

- 12:45 Lunch Break
- 2:15 Mini-Recital
- 2:30 Teaching Demonstration: *Collegiate Private Lesson*  
Robert Weirich with Emily Green (MM)  
Robert A. Duke, moderator
- 3:30 Break
- 4:00 Forums on Piano Pedagogy (*See registration packet for room assignments.*)  
Topic: *Recitals, Contests, and Festivals: Who Wins?*  
Technology Hubs (*Sign up at the Registration Desk.*)  
Topics are described on page 17.
- 4:45 Conference Wrap-Up, *Regency Ballroom*

## Teaching demonstrations



Robert Weirich

**Mary Brostrom Bloom** is Chair of the Keyboard Department at the Neighborhood Music School in New Haven, CT, one of the ten largest community music schools in the country. She is a graduate student of the Westminster Choir College of Rider University and the New School for Music Study where she studied pedagogy with Frances Clark and Louise Goss.

**Robert Weirich** holds the Jack Strandberg Missouri Endowed Chair in Piano at the Conservatory of Music at the University of Missouri, Kansas City. He has performed in musical centers throughout the country and at summer festivals at Tanglewood, Ravinia, and Marlboro. His students have won top prizes in national and international competitions, including the Naumburg (Awadagin Pratt), and the Van Cliburn (Stanislav Ioudenitch).



Mary Brostrom Bloom

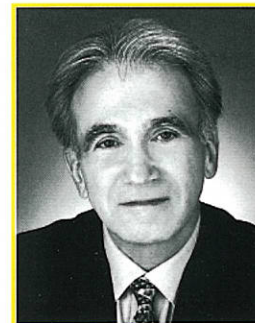
## Pedagogical legacies from the past

### Josef Hofmann and the Early Curtis Days

Conference Artist **Abbey Simon** was a student of Josef Hofmann at the Curtis Institute of Music while Hofmann served as director of that institution. Simon counted Jorge Bolet, Sidney Foster, and Leonard Bernstein among his student friends. In this session, Abbey Simon will recount those early years at Curtis studying with Josef Hofmann and David Saperton.



*Josef Hofmann and his son.*



**Norman Pelligrini,**  
*interviewer*

**Norman Pelligrini's** name is synonymous with Chicago classical music. For more than twenty years he was producer and host of the national broadcasts of the Chicago Symphony Orchestra and of the Lyric Opera of Chicago. He served as program director for WFMT, Chicago's Fine Arts Station, raising it to international prominence and winner of numerous broadcasting awards.

## Forums on Piano Pedagogy

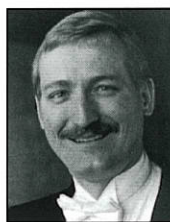
### Topic: Recitals, Contests, and Festivals: Who Wins?

"Everyone was a winner today" announces the contest coordinator. But tears of disappointment well in Jennifer's eyes when she is not called to the stage to receive an award. "Winner" does not describe Jennifer's feelings about herself and her efforts. Are contests only for the brave at heart?

### Forum Discussion Leaders



**LeAnn House**, Ph.D., is Professor of Music at The College of St. Scholastica in Duluth, MN and is Music Director of the Minnesota Ballet. She teaches and performs on piano, harpsichord, and fortepiano.



**Douglas Humpherys** was gold medalist at the inaugural Gina Bachauer International Piano Competition. Recent performances have included concerts in Beijing, Hong Kong, Seoul, Berlin, Hamburg, and Prague. He is co-chair of the piano department at the Eastman School of Music and director of the Eastman International Piano Competition.



**Jeffery Kleinsorge** has studied with Ralph Votapek (Michigan State University) and Constance Keene (Manhattan School of Music). He has taught at Lebanon Valley College (PA) and is on the faculty of The New School for Music Study, Princeton, NJ.



## Forum Discussion Leaders



**Janet Lyman** teaches at Indiana State University where she directs the piano pedagogy program and serves as Assistant Chair of the Department of Music. In 2000, she was named *IMTA Teacher of the Year*.



**Maria del Pico Taylor**, PMTA *Distinguished Teacher of the Year* and recipient of the Lindback Award, is Professor of Piano at Temple University and at the Taubman Institute of Piano. She has performed and taught in France, Poland, England, Czech Republic, Spain, Canada, and throughout the U.S.



**Thomas Lymenstull**, formerly Associate Professor at the University of Southern California, teaches at the Interlochen Arts Academy where he has built a studio of accomplished young pianists from around the world. He will also teach this summer at the Tunghai University Music Festival in Taiwan.



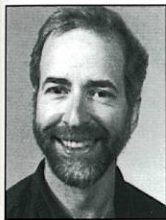
**Carolyn True** has completed her thirteenth year on the piano faculty of Trinity University (TX). Her studies included work with Nelita True, Thomas Schumacher, Eric Heidsieck, and Wesley True. She is an active solo and chamber performer and a member of SOLI Chamber Ensemble.



**Jane Magrath** is Professor and Director of Piano Pedagogy at the University of Oklahoma. She is author of *The Pianist's Guide to Standard Teaching and Performance Literature* and editor of numerous collections of piano literature.



**Nelita True**, internationally known artist and teacher, is Professor of Piano at the Eastman School of Music. She frequently serves on juries of international competitions, and has performed world-wide. Her recordings of over 100 works are available on the Advance, Mark, Educo, and Academy labels. In 2002 the MTNA honored her with the prestigious *Achievement Award*.



**Robert Mayerovitch**, head of the Piano Department and pianist of the resident Elysian Trio at Baldwin-Wallace College (OH), is co-author of *A Symposium for Pianists and Teachers*. He performs widely and presents workshops on "Rules of Pianists' Thumbs," "Mind over Muscle," and "The Choreography of Attention."



**Claire Wachter** is Associate Professor of Piano/Piano Pedagogy at the University of Oregon. As a lecturer and performer, she has appeared in Taiwan, Japan, Austria, Italy, and Canada. Her articles have been published in *Keyboard Companion*, *Piano and Keyboard*, *Piano Life*, *The Oregon Musician*, and *The Piano Quarterly*.



**Timothy Shafer** is Professor of Piano at Penn State where he teaches studio piano and coordinates the class piano and pedagogy programs. He is an active performer, clinician, and adjudicator for professional music organizations and colleges, and is a frequent soloist with regional orchestras.



**Dale Wheeler** coordinates the music department of Red Deer College in Alberta. He is active as a recitalist, accompanist, adjudicator, and clinician, and is a regular columnist for *Clavier*. His articles and research have recently appeared in *Music Alberta*, *American Music Teacher*, and *The Journal of the American Liszt Society*.



**Karen M. Taylor** is Assistant Professor of Music at Indiana University where she directs piano pedagogy studies, the Young Pianists Program, and the summer Piano Academy. Dr. Taylor is also Adjunct Associate Professor of Piano at DePauw University.



**Samuel Wong** has performed in the U.S., U.K., China, and South America. He studied with Leon Fleisher at the Peabody Conservatory, and teaches privately in Plano, TX where he is the Director of the Texas Conservatory for Young Artists.

# Notes

## Home Concert 2000™

a Revolutionary Tool for  
Piano Instruction and  
Performance Preparation

Score-following Software  
for the 21<sup>st</sup> Century Pianist,  
Student, and Teacher

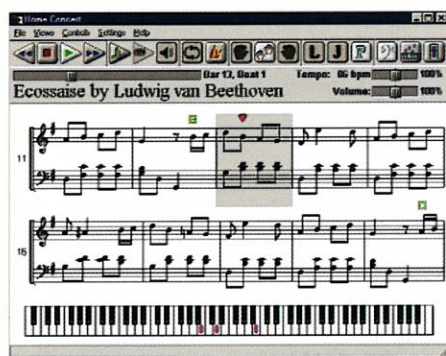
Practice Piano Concertos

Improve Sight Reading

Cultivate Ensemble Skills

Use with Your  
Favorite Piano Method

Compatible with any Digital or  
Acoustic Piano that Has MIDI



Intelligent accompaniment follows  
your tempo and dynamics as you play

Works with Standard MIDI Files

Compatible with SMFs from most  
publishers, including Alfred, Hal  
Leonard, FJH Music, and Warner  
Bros.

Automatically "turns the pages"

Excellent practice tool for the student  
to use at home

**\$99.00**

*From elementary method  
accompaniments to virtuoso  
concerto orchestrations,  
Home Concert may well be  
the most exciting  
development in keyboard  
music learning since, well  
... the keyboard itself!*

Sam Holland, Coauthor  
*Frances Clark Music Tree*

To place an order, please visit:

[www.PianoLane.com](http://www.PianoLane.com)  
[www.KellysMusicAndComputers.com](http://www.KellysMusicAndComputers.com)  
[www.Edirol.com](http://www.Edirol.com)  
[www.YamahaMusicSoft.com](http://www.YamahaMusicSoft.com)  
[www.TimeWarpTech.com](http://www.TimeWarpTech.com)

For more information or  
to download free  
demo software  
please visit us at:

[www.TimeWarpTech.com](http://www.TimeWarpTech.com)

## UNIVERSITY OF LOUISVILLE SCHOOL OF MUSIC

*Undergraduate and Graduate degrees in  
Piano Pedagogy, Performance, Music Education,  
Music Therapy, Music History, and Theory/Composition*

**Keyboard Faculty**  
Jack Ashworth, harpsichord  
Vernon Cherrix, piano  
Melvin Dickinson, organ  
Brenda Kee, piano  
Naomi Oliphant, piano  
Krista Wallace-Boaz, class piano

Graduate Teaching and Accompanying Assistantships  
offering tuition, \$10,000 stipend, and health benefits.

School of Music  
University of Louisville  
Louisville, KY 40292  
Phone: 502-852-6907  
[www.louisville.edu/music](http://www.louisville.edu/music)  
Brenda Kee, Keyboard Coordinator  
[bekee001@louisville.edu](mailto:bekee001@louisville.edu)

Audition Dates for Fall 2004 Admission:  
February 21, February 28, March 27

## The Frances Clark Center for Keyboard Pedagogy



Frances Clark

### Frances Clark

Frances Clark's legendary philosophy of teaching directs the work of The Frances Clark Center for Keyboard Pedagogy. The Board of Trustees includes people who worked closely with Dr. Clark through the years, as well as other prominent teachers, pianists, and researchers. It is the purpose of the Center to insure the ongoing influence of her philosophy, as well as to develop, test, and disseminate new applications through its research, seminars, workshops, and conferences.

### Mission of the Center

The Frances Clark Center for Keyboard Pedagogy was established in 1999 as a not-for-profit corporation (501c3), for the purpose of researching all aspects of keyboard pedagogy and disseminating the findings to the broadest possible community of independent and institutional keyboard educators.

### Work of the Center

The Center's current projects include:

- *The New School for Music Study*, a community music school and teacher training center in Princeton, NJ, founded in 1960 by Frances Clark and Louise Goss.
- *Keyboard Companion* magazine, a quarterly periodical for piano teachers, founded in 1990 by Richard Chronister, now owned and published by The Frances Clark Center, Elvina Pearce, Editor-in-Chief.
- The *National Conference on Keyboard Pedagogy*, reactivated by The Frances Clark Center in 2001.

### Board of Trustees

Louise L. Goss, *Chair*  
Marvin R. Blickenstaff, *President*  
Samuel S. Holland, *Executive Director*  
Elvina Truman Pearce, *Vice President & Director of Pedagogy*  
Barbara English Maris, *Secretary-Treasurer*  
Sue West Medford, *Director of Public Relations*  
Nelita True, *Director of Performance*  
Robert A. Duke, *Director of Research*



**MUSIC FOR  
YOUNG  
CHILDREN™**

**A dynamic group music program  
for children 3+.**

Why become a certified  
MYC® teacher?

- ◆ Nation-wide teacher support network
- ◆ Proven curriculum developed over 20 years
- ◆ Teacher training/refresher opportunities
- ◆ Comprehensive student and teacher materials
- ◆ Curriculum includes warm-ups, keyboard, singing, ensembles, listening, homework

**Visit our NEW website:  
www.myc.com**

1-800-561-1MYC Email [myc@myc.com](mailto:myc@myc.com)

## Index of Advertisers

Alfred Publishing Company . . . . .	1
American-Russian Piano Institute . . . . .	43
Arizona State University . . . . .	12
Burt & Company . . . . .	43
California State University, Fullerton . . . . .	32
Dampp-Chaser . . . . .	25
David Kraehenbuehl Society . . . . .	23
Eastman School of Music . . . . .	32
Faina Bryanskaya . . . . .	35
The FJH Music Company . . . . .	24
Frances Clark Videotape . . . . .	32
Hal Leonard Corporation . . . . .	5
Indiana State University . . . . .	44
JW Pepper & Sons . . . . .	45
Kawai America Corporation . . . . .	Back inside cover
KITS . . . . .	34
Lawrence University . . . . .	48
MTNA . . . . .	4, 13
Martha Braden Studios . . . . .	23
Music for Young Children . . . . .	42
Myklas . . . . .	34
National Conference on Keyboard Pedagogy 2005 . . . . .	46
Penn State University . . . . .	13
Piano Lane . . . . .	35
Portland State University . . . . .	35
Southern Methodist University . . . . .	10
Steinway & Sons . . . . .	Front inside cover
Time Warp Technologies . . . . .	41
University of Kansas . . . . .	10
University of Louisville . . . . .	41
University of Oklahoma . . . . .	11
Warner Bros. Publications . . . . .	Back cover
West Chester University . . . . .	33
Westminster Choir College . . . . .	47
William Westney . . . . .	34
Yamaha Corporation of America . . . . .	2



**Burt & Company**

**Discount Music Supply**

SERVING THE PERFORMANCE & PEDAGOGY COMMUNITIES SINCE 1975

**IF IT'S IN PRINT, IF IT HAS NOTES ON THE PAGE.....**

Printed Music for Pedagogy and Serious Performance is our only business.

*Retail Discount Distributors of . . . . .* Alfred • Associated Board of Royal Schools • Amsco • Augsburg • Barenreiter • Beckenhorst • Benson • Belwin Mills • Boosey & Hawkes • Boston • Breitkopf & Haertel • Broude Bros • CD Sheet Music • Chester • Concordia • Faber & Faber • Carl Fischer • Flammer • F J H Music • Frederick Harris • Galaxy • Hal Leonard • Henle • Hinshaw • Hope • International • Kalmus • Lillenas • Lorenz • Mark Foster • Masters • Mel Bay • Myklas Press • Neil A. Kjos • Oxford University Press • Peters • Presser • ReSa • Schaum • Schirmer • Schott • Shawnee • Summy Birchard • Suzuki • TheoryTime • Trinity College • Warner Bros • Willis • Word *...and more!*

**20%** discount for most print materials  
(New accounts need 10 item order for discount)  
**5%** 50-piece bulk discount & free shipping available.  
**40%** wholesale discounts also available.  
Please call or see our website for details.

PO Box 1145, MARLTON NJ 08053

EMAIL: [ORDERS@BURTNCO.COM](mailto:ORDERS@BURTNCO.COM)

HTTP://[WWW.BURTNCO.COM](http://WWW.BURTNCO.COM)

FAX: 888-830-2525 (US & CAN) • 856-983-6157

OFFICE HOURS: 8 A.M. - 6 P.M. DLY / 8 A.M. - 1 P.M. SAT. / NY TIME

8 0 0 - 5 4 8 - 2 8 7 8 • 8 5 6 - 9 8 3 - 6 0 0 4

## THE AMERICAN-RUSSIAN PIANO INSTITUTE INVITES YOU

TO JOIN US FOR OUR 10TH SUCCESSFUL YEAR IN ONE OF THE WORLD'S  
LEADING CULTURAL CENTERS -- ST. PETERSBURG, RUSSIA!

tentative dates: June 19 - July 5 2004

Teachers, students, auditors will participate in a unique cultural experience through daily communication with Russian musicians and other citizens.

- Programs are especially tailored for each group
- Included: lessons - master classes - recitals - lectures - excursions to famous sites - Hermitage Museum - other cultural events
- All-inclusive price! airfare, hotel, meals, educational, cultural programs

Program Directors: Frances Larimer, Professor Emerita, Northwestern Univ.  
Donald Morelock, Professor of Music, Schoolcraft College  
Vladimir Shlyapnikov, St. Petersburg Center of Music

To add your name to the mailing list for brochure, contact:

Frances Larimer, 2760 Crawford Ave., Evanston, IL 60201

PH: 847/328-3728 FAX: 847/328-2776 Email: [f-larimer@northwestern.edu](mailto:f-larimer@northwestern.edu)

## Acknowledgements

We express our grateful thanks to the following individuals and organizations who have contributed generously to the success of the 2003 National Conference on Keyboard Pedagogy:

**Cathy Albergo**, Director of Production

**Steve Betts**, Assistant Director of Production

**American Web** and **Randy Tyler**, President, for printing and distributing the Conference brochure.

**Double Image Press** for printing the Conference Program.

**Gurtman and Murtha Associates**, management for Abbey Simon, for arranging the appearance of our Conference Artist.

**Steven Hall**, Stage and Production Manager

The **Hyatt Regency Oak Brook** for the Conference facilities and for their extraordinary attention to every detail.

**Betsy Jackson**, Registration Desk Manager

**Laura Burns**, Registration Assistant

### Mini-Recital Selection Committee:

#### Acoustic Pianos

Craig Sale, Chair      Jennifer Merry  
Karin R. Edwards      Susan Osborn

#### Digital Pianos

Susan Ogilvy      Joy Carden

### Teachers of students in the mini-recitals:

Marilyn Andersen      Mark Edwards  
Linda Barker      Elaine Felder  
Bruce Berr      Cheryl Lim  
Terri Chen      Stephanie Myer  
Vernon Cherrix      Susan Ogilvy  
Joseph Cisar      Craig Sale  
Jennifer Cohen      Sharon Stosur  
Karin Edwards

**Music Teachers National Association** and **Gary Ingle**, Executive Director, for arranging the National Winners Recital and furnishing the recital reception.

**Presentation Services** for furnishing and operating the audio-visual equipment.

### Research Posters Selection

#### Committee:

Mary Tollefson, Chair  
Cynthia Benson      Scott Donald

**Yamaha Corporation of America** for furnishing the Conference Artist reception.

Special thanks to the **Piano Manufacturers Association International (PMAI)** and **Brenda Dillon** for making it possible for **Kawai America**, **Samick/Knabe**, **Steinway & Sons**, and **Yamaha Corporation of America** to provide the fine pianos at this conference.

Special thanks to the **International Association of Electronic Keyboard Manufacturers (IAEKM)** and **Mike Bates** for making it possible for **Casio**, **Korg**, **Kurzweil**, **Roland**, and **Technics** to provide the array of electronic musical instruments used at this conference.

## INDIANA STATE UNIVERSITY

*Where piano pedagogy is a hands-on experience*

### OFFERINGS

Certificate in Jazz Studies  
Certificate in Piano Pedagogy  
Music Business  
Music Composition  
Music Education  
Music History and Literature  
Music Theory  
Performance

### KEYBOARD FACULTY

William Hughes  
Martha Krasnick  
Janet Lyman  
Beverly Simms

SCHOLARSHIPS AND GRADUATE ASSISTANTSHIPS AVAILABLE

*The Certificate in Piano Pedagogy may be earned by students completing any undergraduate or graduate degree at ISU, or by students desiring to earn the Certificate in Piano Pedagogy alone. ISU's Community Music Center offers musical instruction to over 100 students of all ages, infant through adult. Course work in piano pedagogy includes substantial supervised teaching experience in the Community Music Center.*



**Indiana State University**

FOR MORE INFORMATION: Chairperson, Department of Music  
Indiana State University, Terre Haute, IN 47809  
Phone: (812) 237-2771 e-mail: misulliv@isugw.indstate.edu



*Free shipping for all orders placed on-line!*

*A web site just for you!*

**PIANO**  **atpepper.com**<sup>SM</sup>

[www.PianoAtPepper.com](http://www.PianoAtPepper.com)

A Service of J. W. Pepper<sup>SM</sup>

**The Teacher • The Student • The Pianist**

**[www.PianoAtPepper.com](http://www.PianoAtPepper.com)**

*Experience the Pepper<sup>®</sup> difference!*

- ❖ tremendous music selection
- ❖ unparalleled service
- ❖ fast delivery
- ❖ incredible resources for the piano teacher
- ❖ our no-hassle, Total Satisfaction Guarantee

Your younger students (and their parents) will love our free, printable practice record—available on-line!

For over 125 years, Pepper<sup>®</sup> has served the musical needs of the nation. Today we're the world's largest retailer of print music, with over 100,000 titles for piano. Whether you're looking for the best pedagogical materials, a great book to inspire, chamber music or performance works, Pepper<sup>®</sup> will have the music you need, when you need it.

**1 - 8 0 0 - 3 4 5 - 6 2 9 6**

# National Conference on Keyboard Pedagogy 2003 Committees, Task Forces, Liaisons

## COMMITTEES

### Collaborative Performance

Jean Barr, Chair  
Sylvie Beaudette  
Marilyn Neeley  
Andrew Harley  
J.J. Penna  
Laura Melton

### Future Trends

Linda Christensen, Chair  
Laura Beauchamp  
Chin-wen Li  
Mike Bates  
Pamela Pike

### Historical Perspectives

Connie Sturm, Chair  
Deborah Brubaker-Burns  
Anita Jackson  
Barbara Fast

### Independent Teachers

Beth Klingenstein, Chair  
Jill Christian  
Sara McDaniel  
Mary Jane Clarke  
Martha K. Smith  
Vivian Dula

### Internships/Practica

Beverly K. Lapp, Chair  
Reid Alexander  
Victoria McArthur  
Mary Frances Baker  
Rachael Short  
Sam Holland  
Yu-Jane Yang

## Music in Early Childhood

Lorna Heyge, Chair  
Chris Azzarra  
Janelle Whitby  
LeAnn Kirkham  
Sarah Williams  
Diane Smith

## The Pedagogy Student

Pete Jutras, Co-Chair  
Tim Shafer, Co-Chair  
Laura Amoriello  
Rachel Snyder  
Sylvia Coats  
Kathy Winston  
Julie Knerr  
Camille Witos

## Research

Mary Tollefson, Chair  
Cynthia Benson  
Scott Price  
Scott Donald  
Mary Ann Ybarra

## Teaching Adults

Michelle Conda, Chair  
Janet Buswell-Finch  
Pamela Pike  
Ramona Kime Graessle  
Yu-Jane Yang  
Victoria Johnson

## Technology

George F. Litterst, Chair  
Michelle Gordon  
Paul Sheftel  
Kathy Maskell

## Wellness for the Pianist

Gail Berenson, Chair  
Alice Brandfonbrener  
Linda Cockey  
Madeline Bruser  
Brenda Wristen  
Susan Bruckner  
Marcie Zinn

## TASK FORCES

### Pedagogy Curricula

Frances Larimer, Chair  
Barbara Fast  
Timothy Shafer  
Andrew Hisey  
Janice Meyer Thompson  
Helen Marlais  
Kenneth Williams  
Joan Reist

## LIAISONS

### NCKP/Industry

Brenda Dillon, Co-Chair  
E.L. Lancaster, Co-Chair  
Virginia Campbell  
Gail Lew  
Domenic Cicchetti  
Judy Nelson  
Lynda Garcia  
Peggy Otwell  
Karen Koch  
Joanne Smith

### Pedagogy/Administration

Jane Magrath, Chair  
Steve Betts  
Sam Holland  
Ann Milliman Gipson  
Lisa Zdechlik

### Performance/Pedagogy

Phyllis Lehrer, Chair  
Ena Barton  
Matthew Manwarren  
James Breckenridge  
Helen Marlais  
Tony Caramia  
Paul Sheftel  
Chiu-Ling Liu

**Mark your calendar!**

*The National Conference  
on Keyboard Pedagogy*  
2005

**August 4-6, 2005**

Hyatt Regency Hotel  
Oak Brook, Illinois

Pre-Conference  
Seminars on August 3

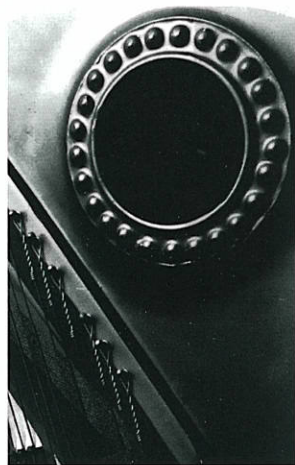
Information is at [www.FrancesClarkCenter.org](http://www.FrancesClarkCenter.org)



# KEYS to SUCCESS

---

## Piano at Westminster



**P**erformance and Pedagogy, both solo and collaborative, are at the heart of what we offer our piano students at Westminster. Students learn ways to motivate themselves and others. They evaluate teaching methods, learn how to build technique and musicianship, and analyze and perform a large representative sample of the solo, duet and chamber music repertoire. In addition to our resources at Westminster and Rider, graduate students have the opportunity to study and work with the faculty from Westminster Conservatory, our community music school; and as interns in the private studios of college faculty, in individual and group classes. Other program highlights include one-to-one supervision and opportunities for selected areas of specialization (gifted, adult, pre-school, group and/or private).

Collaborative piano is another art that we cultivate at Westminster. Since all musicians at the college learn to sing, the collaborative pianist is in very high demand. The outstanding faculty of international acclaim teach courses in the technical skills of accompanying, chamber music, voice literature and the pedagogy of coaching to graduate students. Lessons, exams, and recitals provide opportunities for the accompanist to learn the wonderful literature that requires expert partnership for the singer. The art of coaching is a unique component of our accompanying and coaching program.

### **Westminster Choir College Faculty:**

**Dalton Baldwin**

**Ena Bronstein Barton**

**Marvin Blickenstaff**

**Ingrid Clarfield**

**Miriam Eley**

**James Goldsworthy**

**Phyllis Alpert Lehrer**

**Lilian Livingston**

**Alison Lont**

**Thomas Parente**

**J.J. Penna**

**Agnes Poltorak**

**Jean Stackhouse**

**Betty Stoloff**

The only school of its kind in the world.

# Westminster

*Westminster Choir College of Rider University*

For more information contact the Office of Admissions, 101 Walnut Lane, Princeton, NJ 08540.  
Call 1-800-962-4647 or e-mail us at: [wccadmission@rider.edu](mailto:wccadmission@rider.edu).

# LAWRENCE UNIVERSITY



An extraordinary program for undergraduate keyboard study, the Lawrence Conservatory of Music offers an array of opportunities for students from around the world.

Bachelor of Music degree in performance, music education, and theory/composition

Emphases in accompanying and pedagogy

Bachelor of Arts degree in over 30 disciplines

Bachelor of Arts/  
Bachelor of Music five-year double-degree program

Ranked in the top tier nationally by *U.S. News & World Report*

Scholarships up to \$10,000 per year; average need-based financial aid award for incoming freshmen exceeds \$20,100

## **Piano Faculty**

Michael Kim

Kathleen Murray

Dmitri Novgorodsky

Anthony Padilla

Mary Van De Loo, pedagogy

## **Organ Faculty**

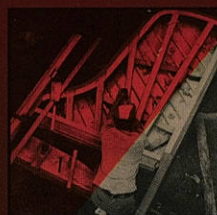
Wolfgang Rübsam

For further information contact: Conservatory Admissions  
Lawrence University • Appleton, WI 54912-0599  
excel@lawrence.edu • 1-888-556-3952 • www.lawrence.edu

# The Premier Piano of Japan

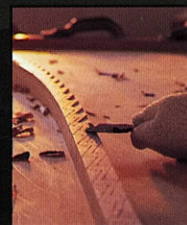
STRIVING BEYOND  
THE EXTRAORDINARY

# Passion



The passion for excellence dwells deeply within the heart of every

*SHIGERU* craftsman. Like members of a great orchestra, each craftsman brings forth a seasoned wealth of skill and artistry that compels the "whole" to surpass the sum of its parts. Day by day, the craftsman strives to leave an indelible mark upon each



creation... an inexpressible emblem of intense desire and duty.



It is this symphony of passionate energies that has elevated the

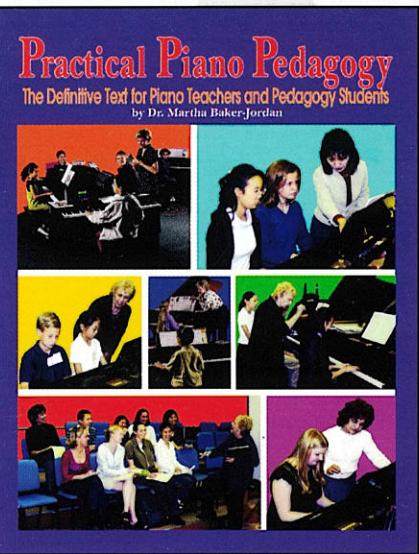
*SHIGERU* piano to the lofty strata shared by few and respected by all.



*SHIGERU KAWAI*

The Premier Piano of Japan

# Practical Piano Pedagogy



The Definitive Text for Piano Teachers,  
University Professors, and Piano Pedagogy Students

by Dr. Martha Baker-Jordan  
Book and CD-ROM (ELM03004) \$39.95

PIANO STUDY PROGRESS REPORT

NAME \_\_\_\_\_ DATE \_\_\_\_\_

**REPERTOIRE PROGRESS REPORT**

EXCELLENT \_\_\_\_\_ Shows high-quality practicing

GOOD \_\_\_\_\_ Repertoire preparation is okay but not up to full ability. Needs to try for higher quality practicing

FAIR \_\_\_\_\_ Needs to improve practice habits and repertoire preparation

POOR \_\_\_\_\_ Must improve

TEACHER COMMENTS:

**TECHNIQUE PROGRESS REPORT**

EXCELLENT \_\_\_\_\_ Shows high-quality practicing

AVERAGE \_\_\_\_\_ Needs more careful practice  
Needs more attention to correct fingering  
Needs more attention to hand position  
Needs more attention to good tone

POOR \_\_\_\_\_ Must improve, with emphasis on items checked above

TEACHER COMMENTS:

**THEORY PROGRESS REPORT**

EXCELLENT \_\_\_\_\_ All papers done to best of ability with good accuracy

AVERAGE \_\_\_\_\_ Incomplete work  
Fewer errors need to occur  
More careful work and thought needed

POOR \_\_\_\_\_ Writing neatness needs to improve  
Must improve, with emphasis on items checked above

TEACHER COMMENTS:

**Readiness Evaluation for Beginner**

In Examples 1 through 3, have the student compare the second note in the first note in each part. In example 4, play the intervals melodically and have the student compare the second melodic interval to the first. In example 5, have the student repeat the rhythm pattern of each part. Repeat each part a maximum of three times. Evaluate answers by comparing the two lines under each part.

✓ = Student gave correct answer. \_\_\_ = Number of tries (1, 2 or 3).

**Ex. 1 : Higher or Lower**

Part 1 [2] [3] [4] [5]

**Ex. 2 : Louder or Softer**  
Play examples hands together

[1] *pp* [2] *pp* [3] *pp* [4] *pp* [5] *pp*

**Ex. 3 : Longer or Shorter**  
Play examples hands separately

[1] [2] [3] [4] [5]

**Ex. 4 : Same or Different**

[1] [2] [3] [4] [5]

**Ex. 5 : Rhythm**  
Have student tap or use a rhythm instrument

[1] [2] [3] [4] [5]

- Lesson Planning
- Methods and Materials Review
- Teaching Techniques
- Motivational Ideas
- Organizational Skills
- Technology
- Jazz
- Transfer Students
- Problem Solving
- Innovative, Interactive CD ROM for Mac or PC

**The First Really Practical Pedagogy Manual for ALL Teaching Situations!**

Practical Piano Pedagogy is a comprehensive 468-page piano pedagogy text for ALL piano teachers – future teachers enrolled in pedagogy courses and experienced teachers who desire to improve and enhance their teaching. Dr. Martha Baker-Jordan developed and test-taught this text for undergraduate and graduate piano pedagogy courses, drawing upon her extensive private and group teaching experience as an independent studio teacher and more than 20 years as a university pedagogy professor. The unique CD-ROM allows teachers maximum flexibility to customize the templates and forms presented in the book, or teachers may choose to use more than 40 perforated forms available as hard copies in the appendix and copy them for use in their own studios or teaching situations.

**Interested in adopting this textbook for your piano pedagogy class?**

We invite you to request a free library copy. Send a letter of request on your college or university stationery to:

Warner Bros. Publications  
Attn: Gail Lew, Director of Keyboard Publications  
15800 NW 48<sup>th</sup> Avenue • Miami, FL 33014



**WARNER BROS. PUBLICATIONS**  
Warner Music Group • An AOL Time Warner Company  
15800 N.W. 48th Avenue • Miami, Florida 33014

This book is available from your favorite music store.  
Call 1-800-327-7643 or 305-620-1500, ext. 7399 for more information.